

ANT-2520

2.4G/5G Indoor Directional Patch Antenna

- High-Gain Dual-Band Antenna
- Uni-directional Beam Pattern
- Compatible with 802.11ac/a/b/g/n Standards
- Easy Installation
- Can increase wireless signal range and maintain better speed over distance

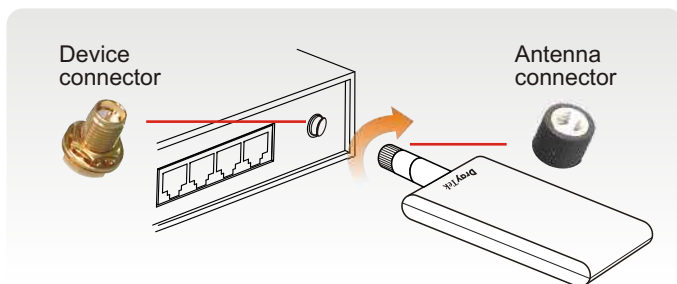


10 dBi

Environment	Indoor
Frequency Range	2400~2500 MHz 5150~5875 MHz
Peak Gain @ 2.4G @ 5G	7.5 dBi 10 dBi
VSWR	≤ 2.0
Polarization	Vertical, Linear
HPBW/Horizontal @ 2.4G @ 5G	70° 60°
HPBW/Vertical @ 2.4G @ 5G	60° 30°
Power Handling	2W
Impedance	50 Ω
Connector	RP SMA Plug

Important Note: Wireless performance always depends on your specific environment. Although these aerials provide higher gain, they will not necessarily improve wireless performance in any given scenario. There are maximum permitted signal or total gain levels permitted in most countries, so you should also check any local legislation.

Installation Diagram



Directional Patch

