

# 1. Installation and Configuration of Database Server

## 1.1 Downloading MS SQL 2008 Express

MSSQL 2008 Express is free to download from the following website:

<http://www.microsoft.com/download/en/details.aspx?displaylang=en&id=22973>

Running on 64 bit: SQLEXPRTW\_x64\_ENU.exe

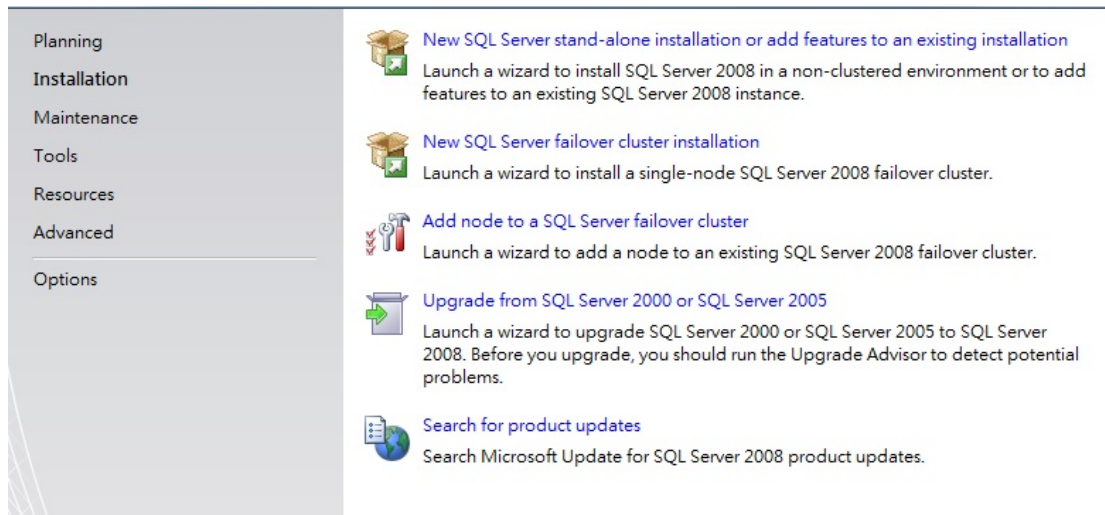
Running on 32 bit: SQLEXPRTW\_x86\_ENU.exe

## 1.2 Database Setup

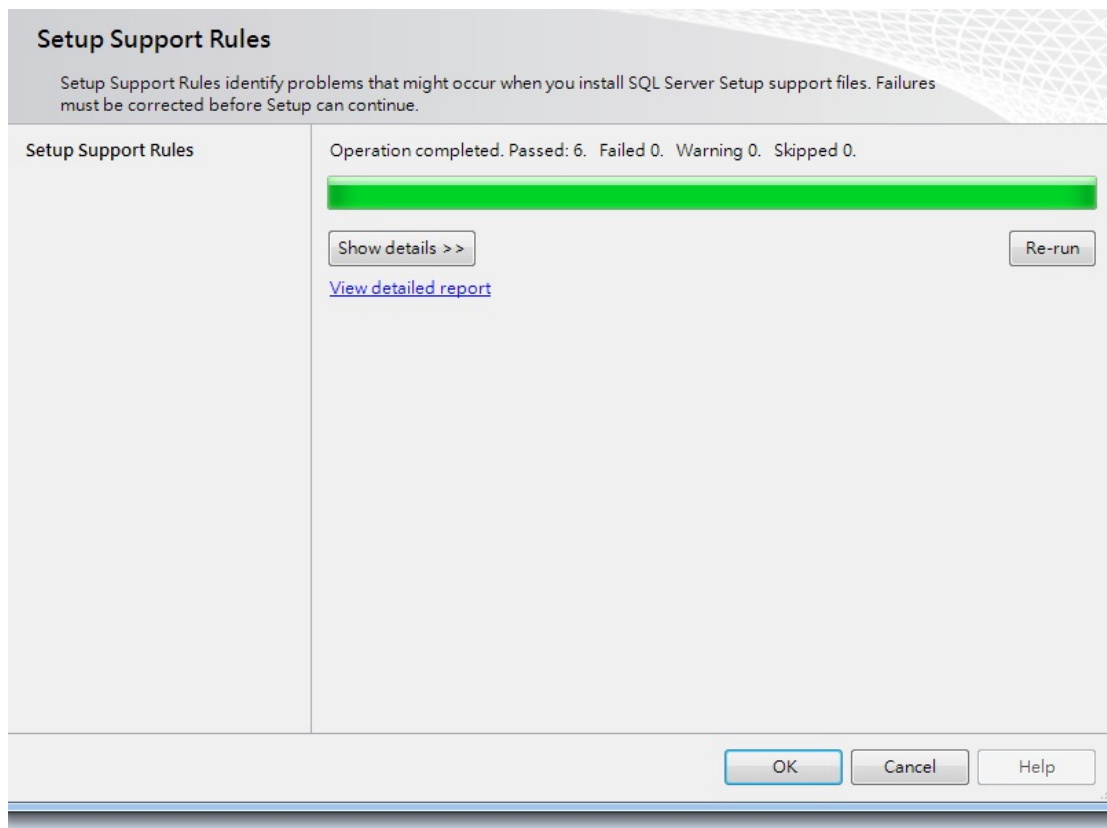
1.2.1 Run and install all downloaded files

1.2.2 On Windows 7 system, open Microsoft SQL 2008 installation file. The OS may detect compatibility issue and ask to install SP1. Please ignore this part for now. Go ahead and continue on SQL Server2008 installation.

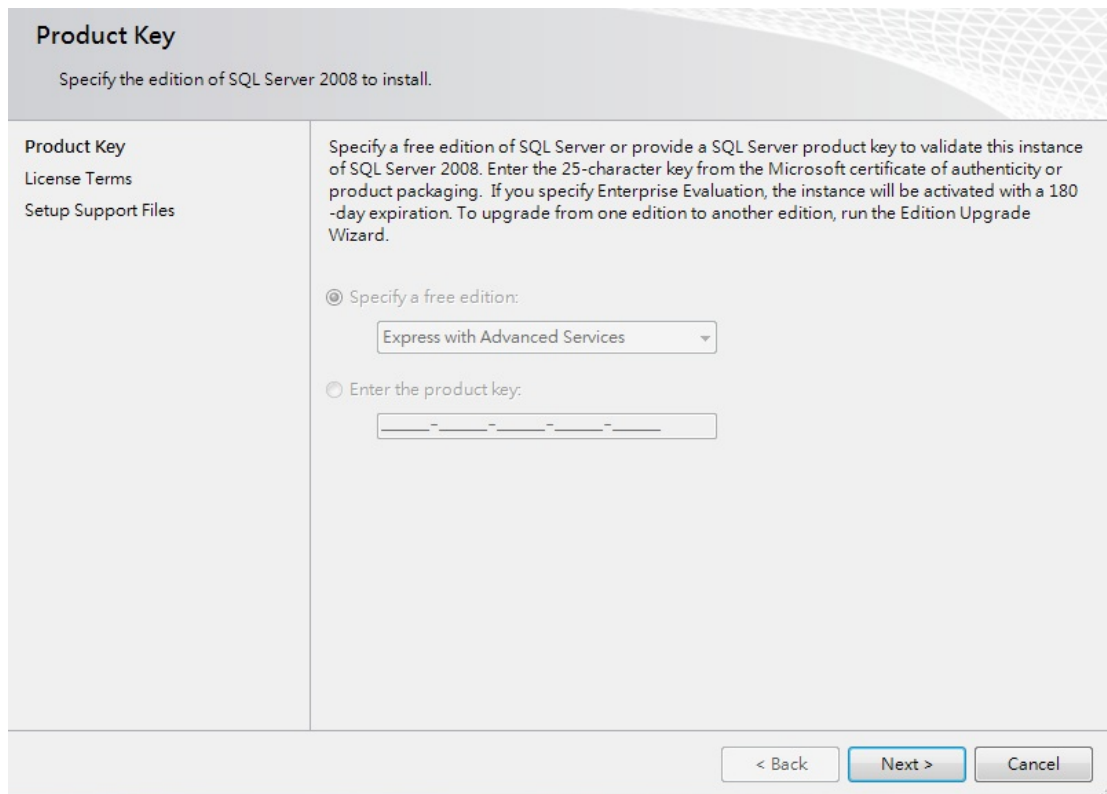
1.2.3 Click on INSTALLATION → New SQL Server stand-alone installation or add features to an existing installation



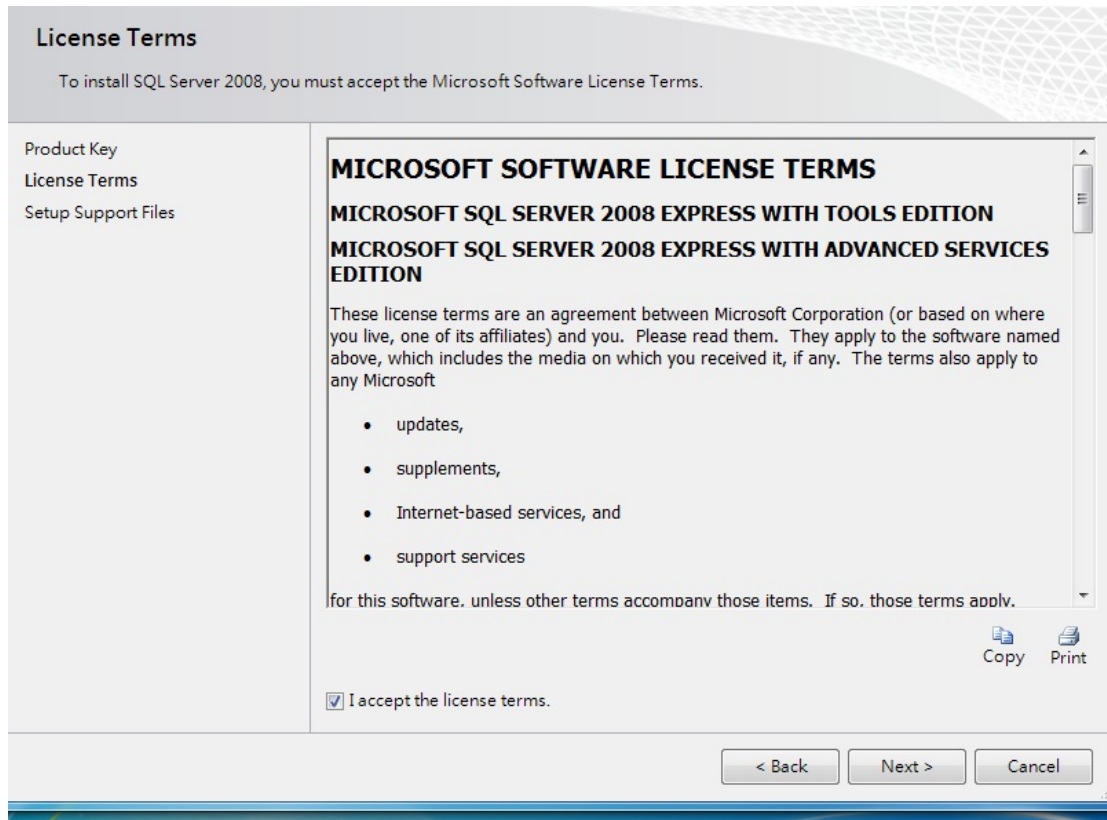
- 1.2.4 During installation, Setup Support Rules identify problems that might occur when you install SQL Server Setup support files, Failures must be corrected before Setup can continue.



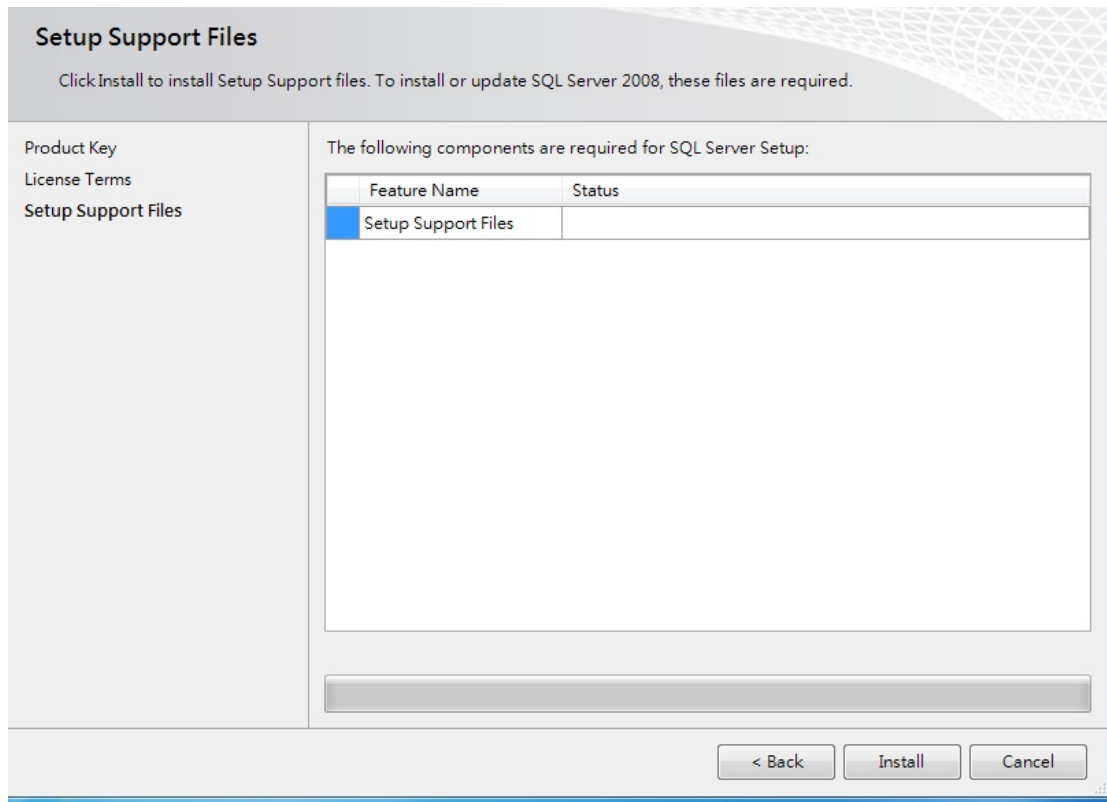
- 1.2.5 Product Key: Specify the edition of SQL Server 2008 to install. In this example, free edition is used for this example. Click NEXT.



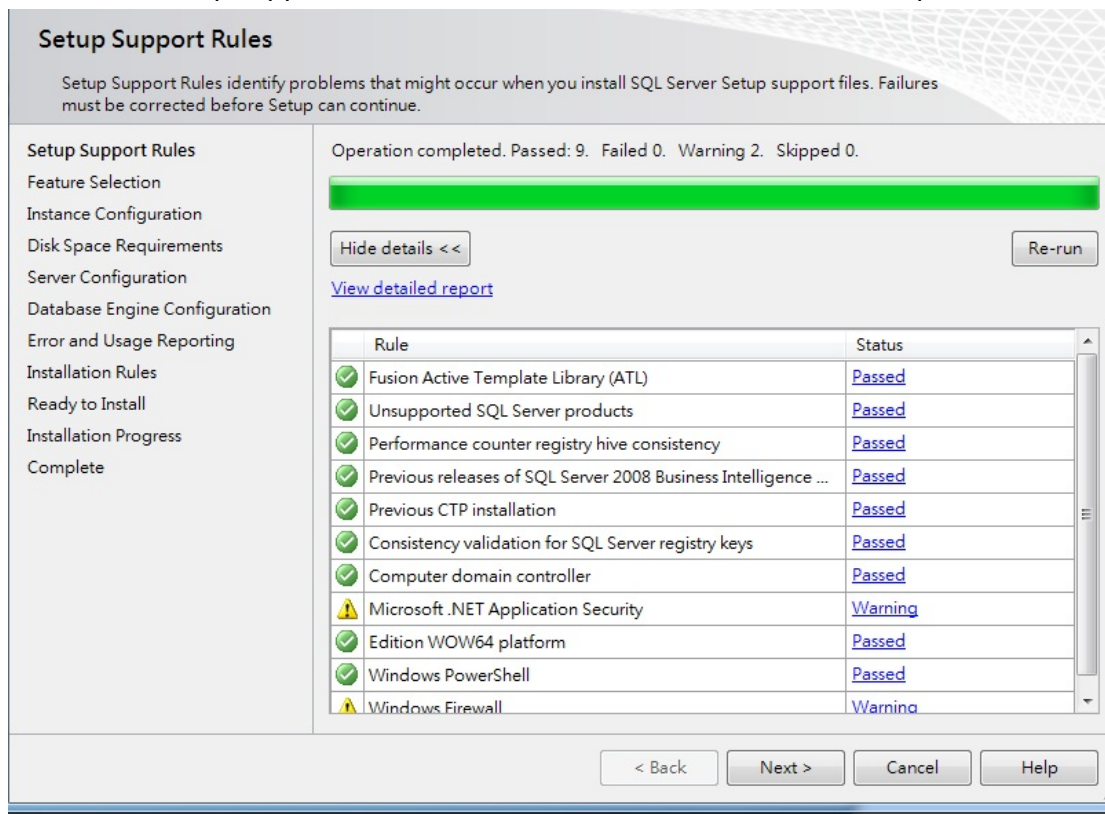
1.2.6 License Terms: Review and accept License Terms. Click NEXT.



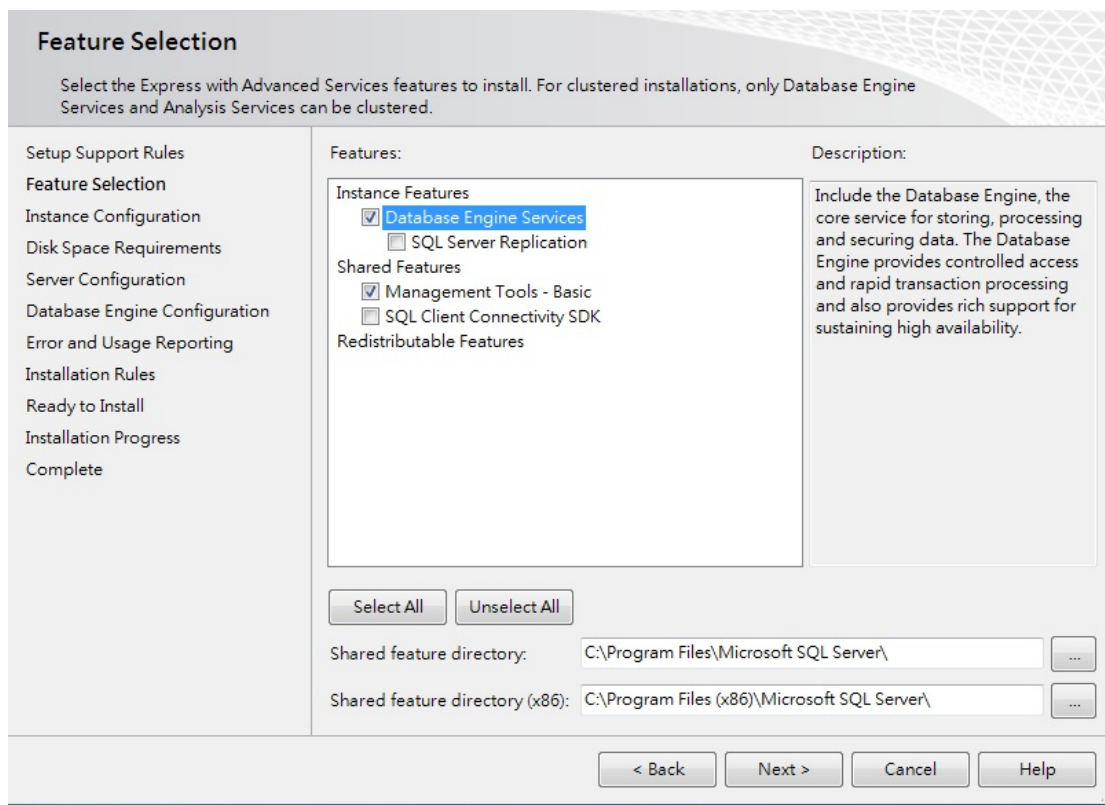
1.2.7 Click INSTALL to install Setup Support files. To install or update SQL Server 2008, these files are required.



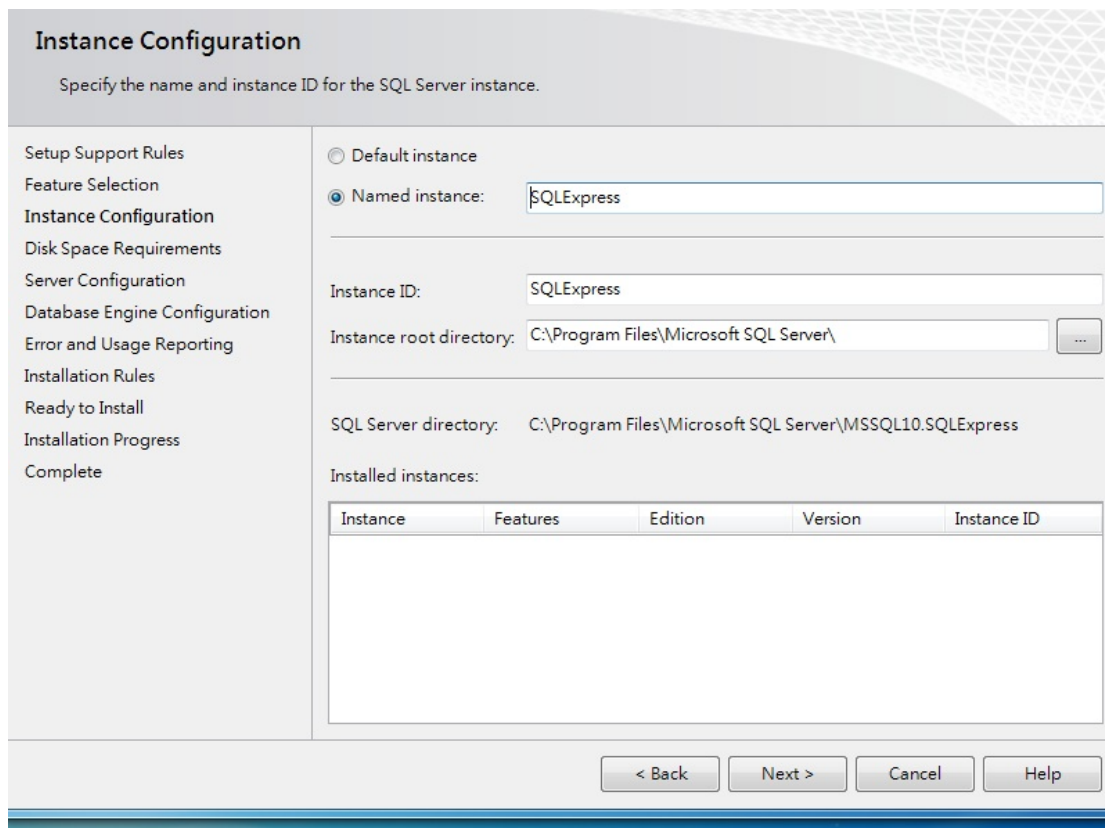
1.2.8 Setup Support Rules: Setup Support Rules identify problems that might occur when you install SQL Server Setup support files. Failures must be corrected before Setup can continue.



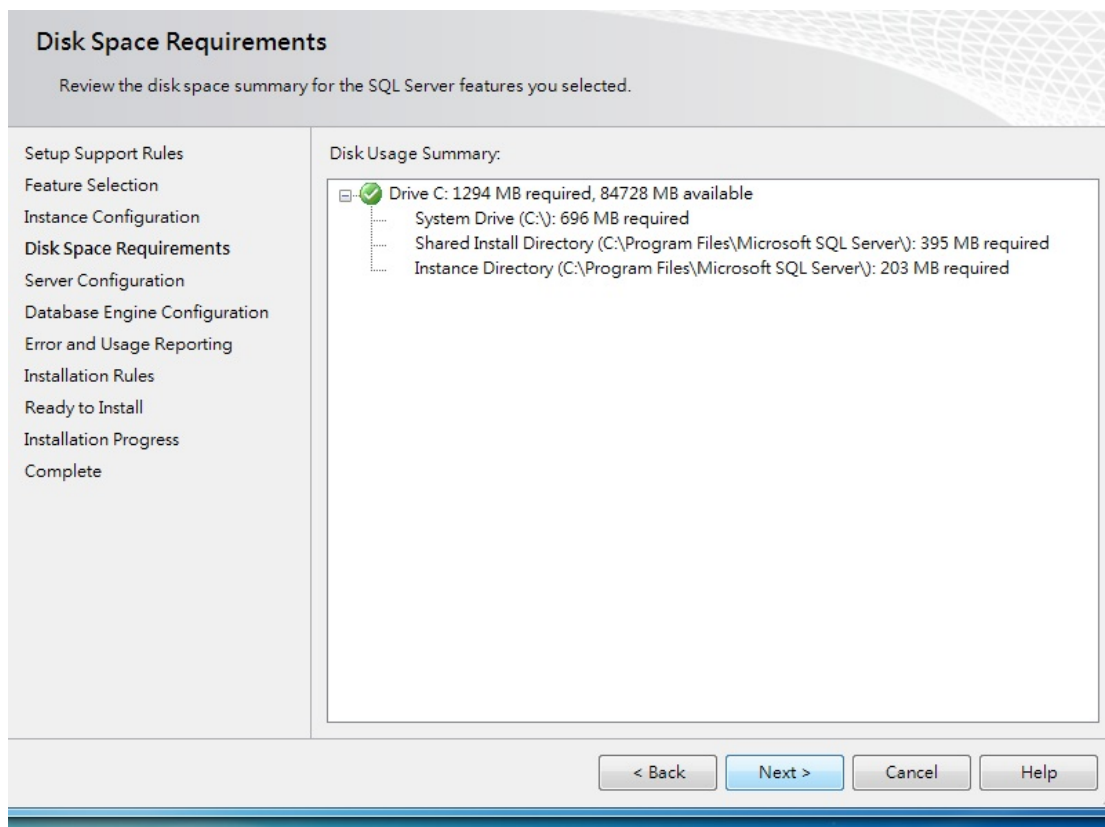
1.2.9 Feature Selection: Select the Express with Advanced Services features to install. For clustered installations, only Database Engine Services and Analysis Services can be clustered. Check Database Engine Services and Management Tools-Basic. Click NEXT.



1.2.10 Instance Configuration: Specify the name and instance ID for the SQL Server instance. In this example, "SQLEXPRESS".

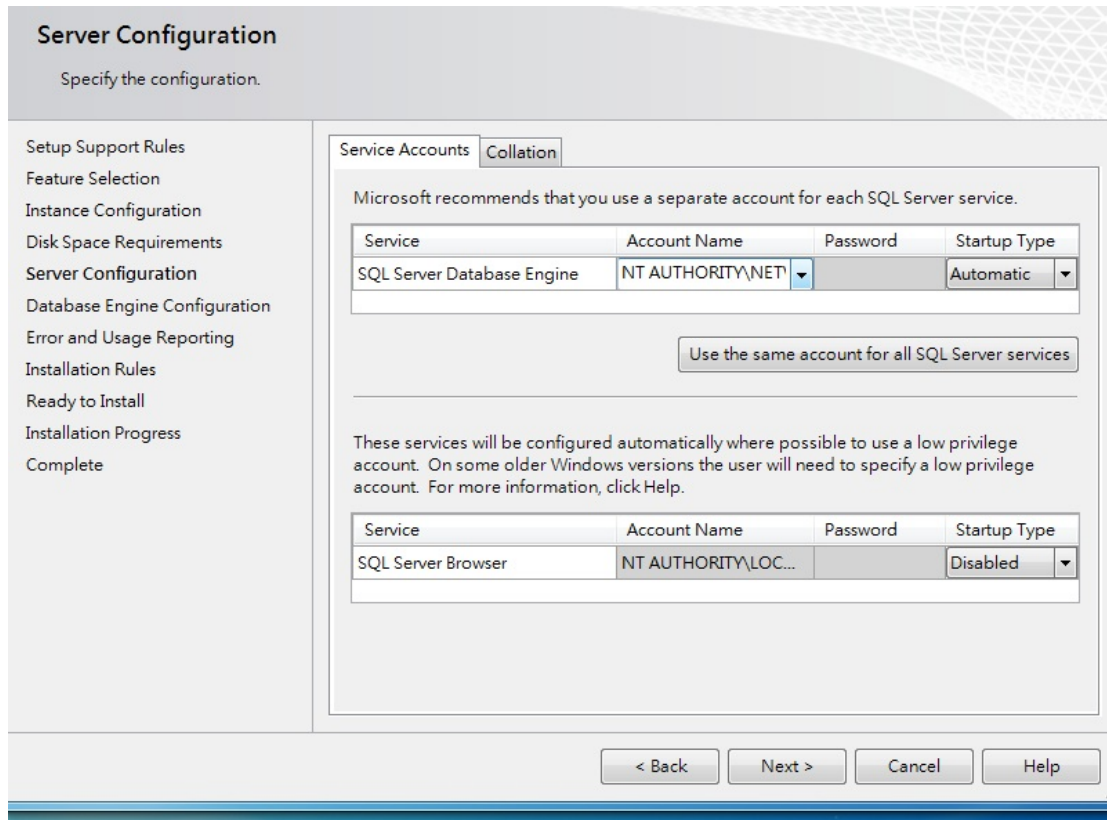


1.2.11 Disk Space Requirements: Review the disk space summary for the SQL Server features you selected. Disk space can be allocated accordingly.

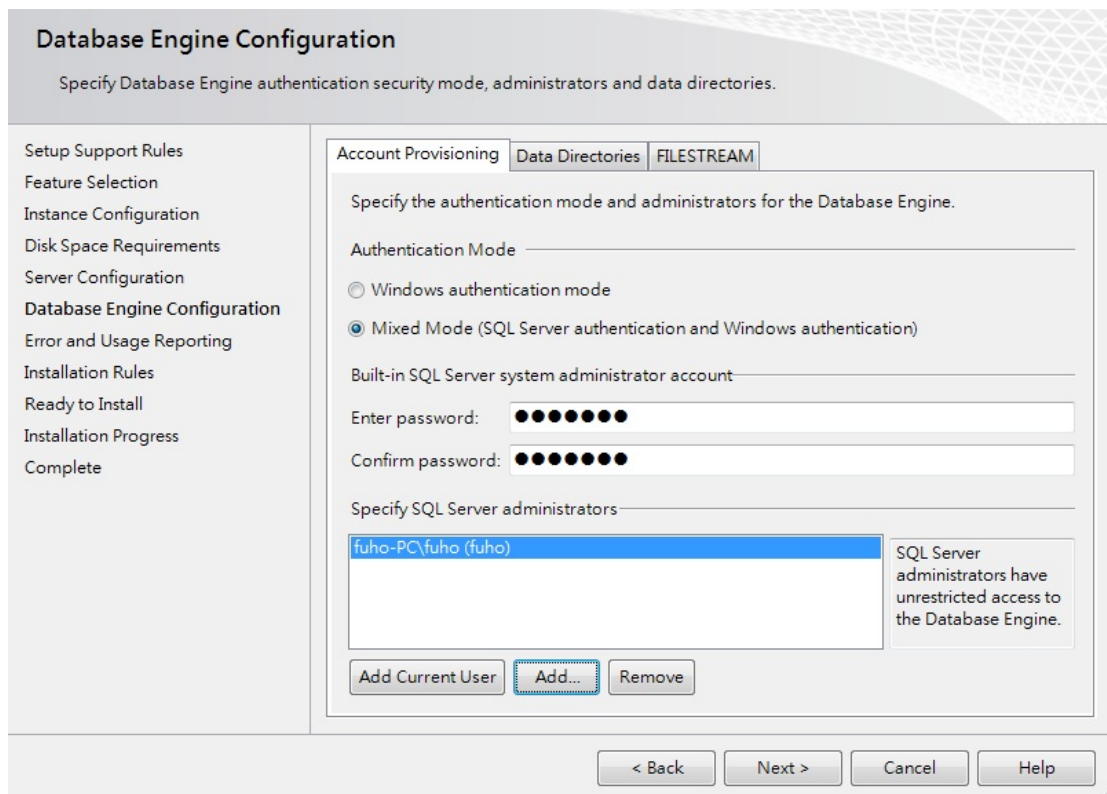




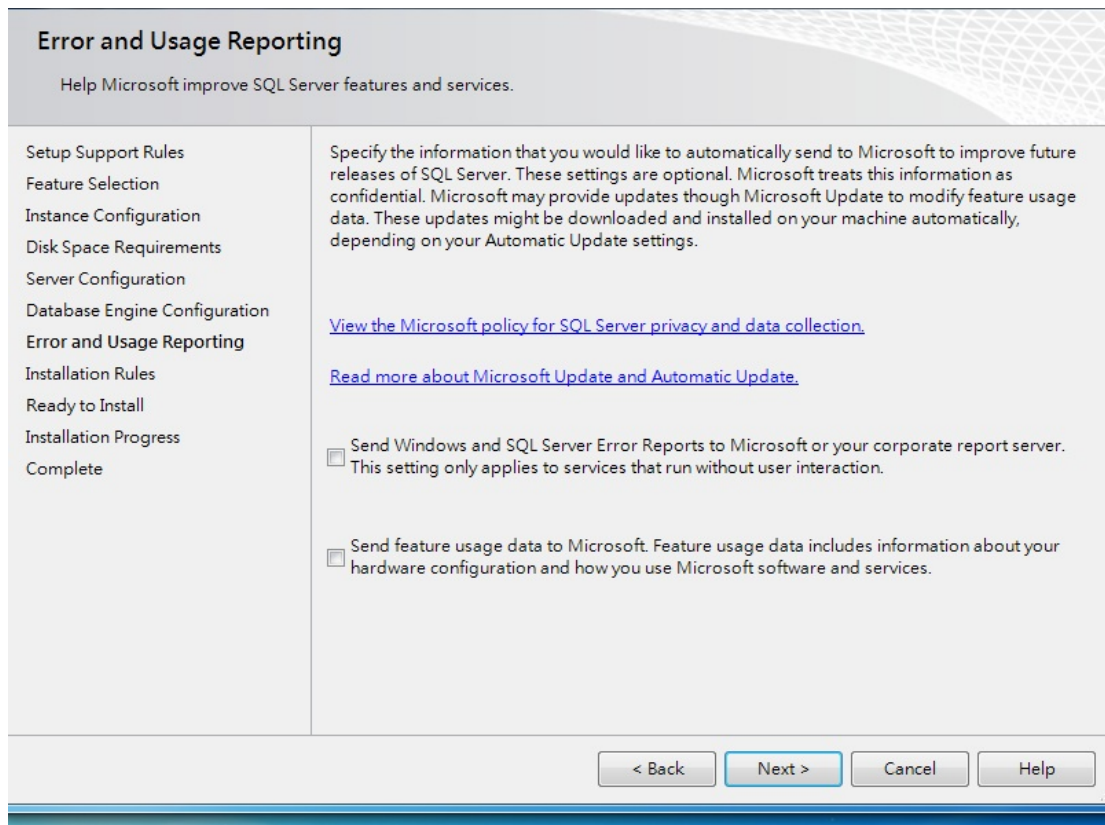
### 1.2.12 Server Configuration: Specify the configuration. Name all Service Accounts.



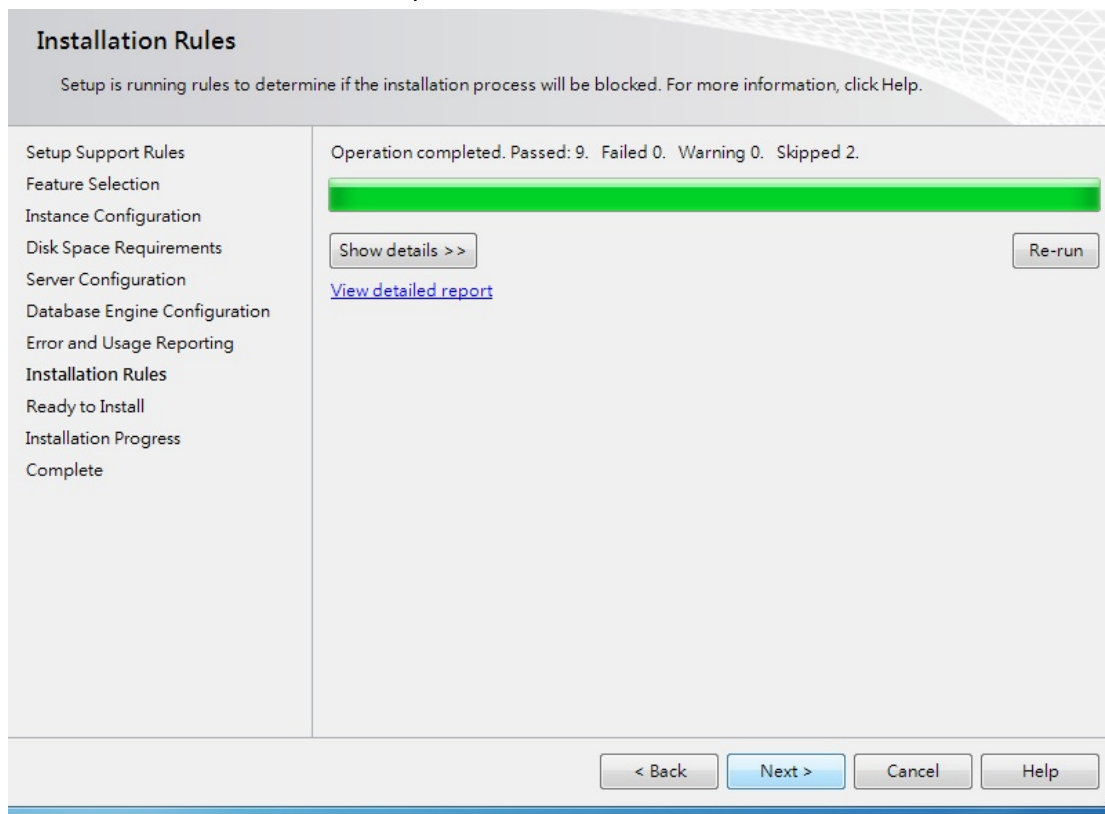
### 1.2.13 Database Engine Configuration: Specify Database Engine authentication security mode, administrators and data directories. Select Mixed mode. Default account name is sa. Create and confirm password. Create and add a SQL Server administrator. In this example, fuho-PC\fuho (fuho).



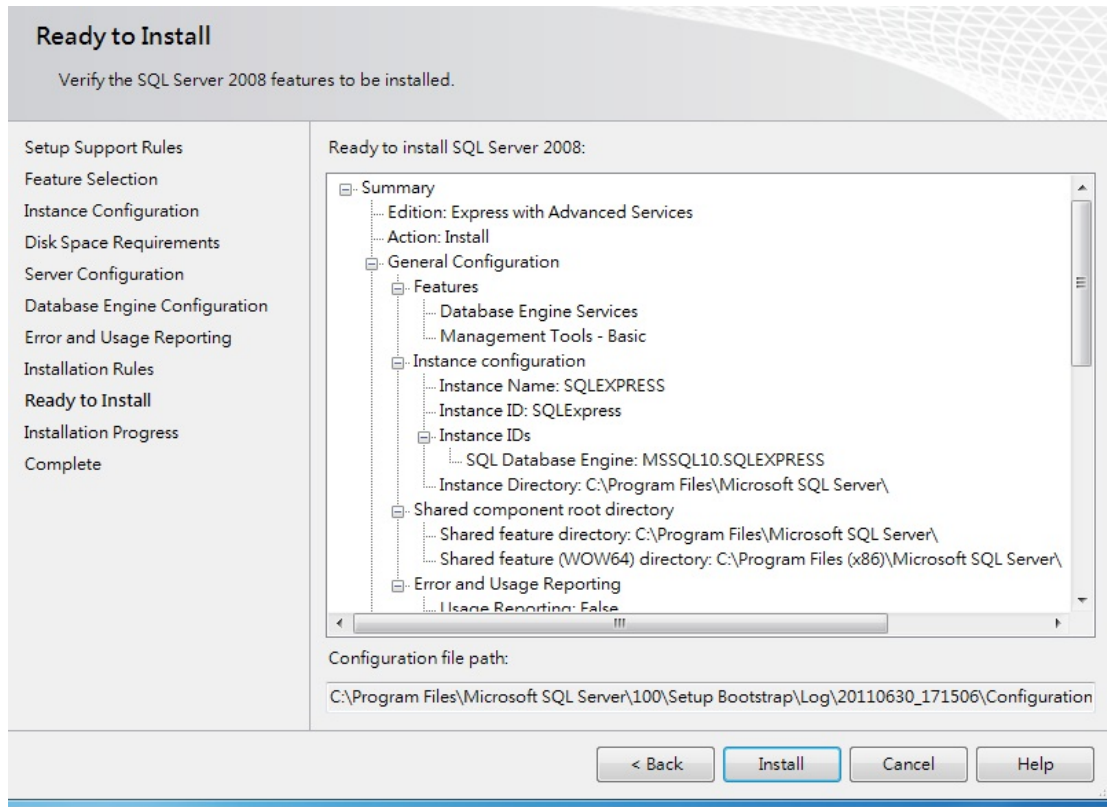
1.2.14 Error and usage Reporting: Help Microsoft improve SQL Server features and services. Click NEXT.



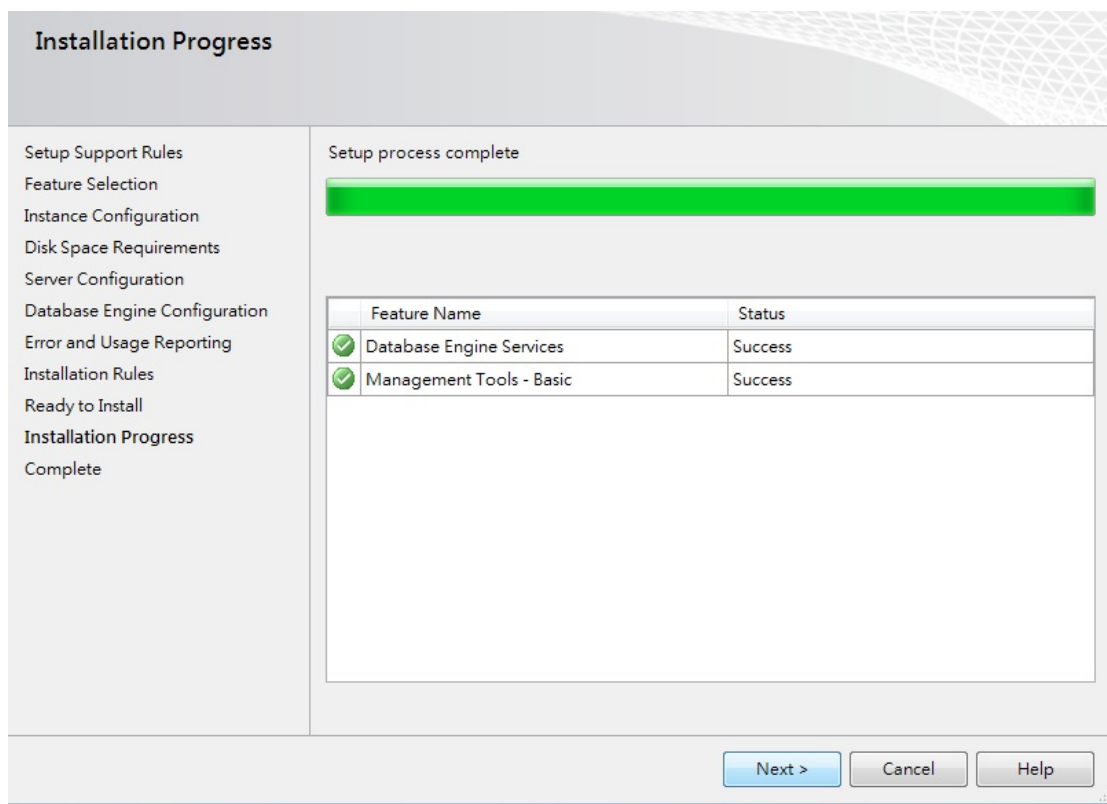
1.2.15 Installation Rules: Setup is running rules to determine if the installation process will be blocked. For more information, click Help.



1.2.16 Ready to Install: Verify the Server 2008 features to be installed. Click INSTALL.



1.2.17 Installation progress will take approximately 10-30 minutes to complete. When finish, SQL Server will list out status of all features.



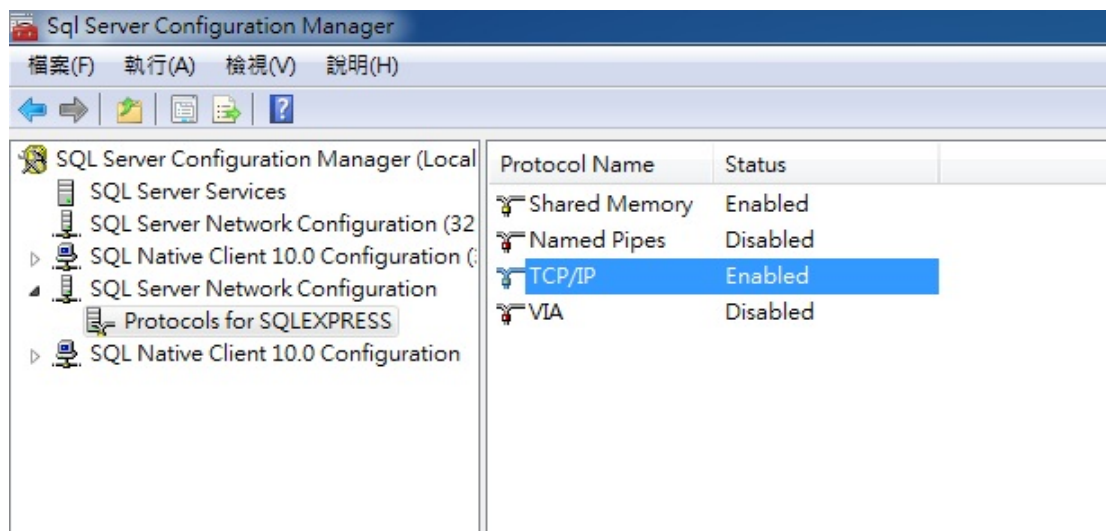


## 1.3 Database Setup

1.3.1 Open SQL TCP/IP → Microsoft SQL Server 2008 → Configuration Tools->SQL Server Configuration Manager.



1.3.2 SQL Server Network Configuration → Protocols for SQLEXPRESS → Enable TCP/IP Protocol → Close SQL Server SQLEXPRESS.



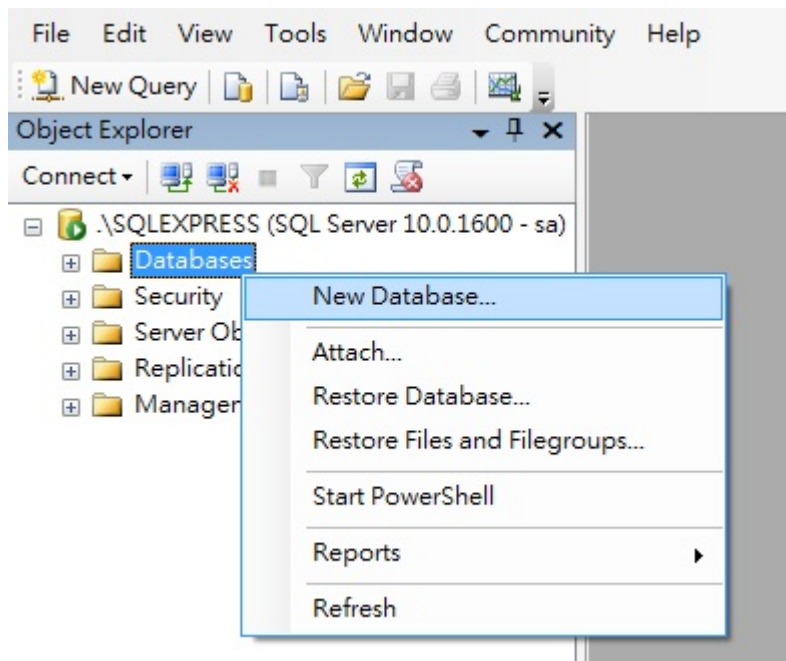
1.3.3 Go to Microsoft SQL Server 2008 ->SQL Server Management Studio.



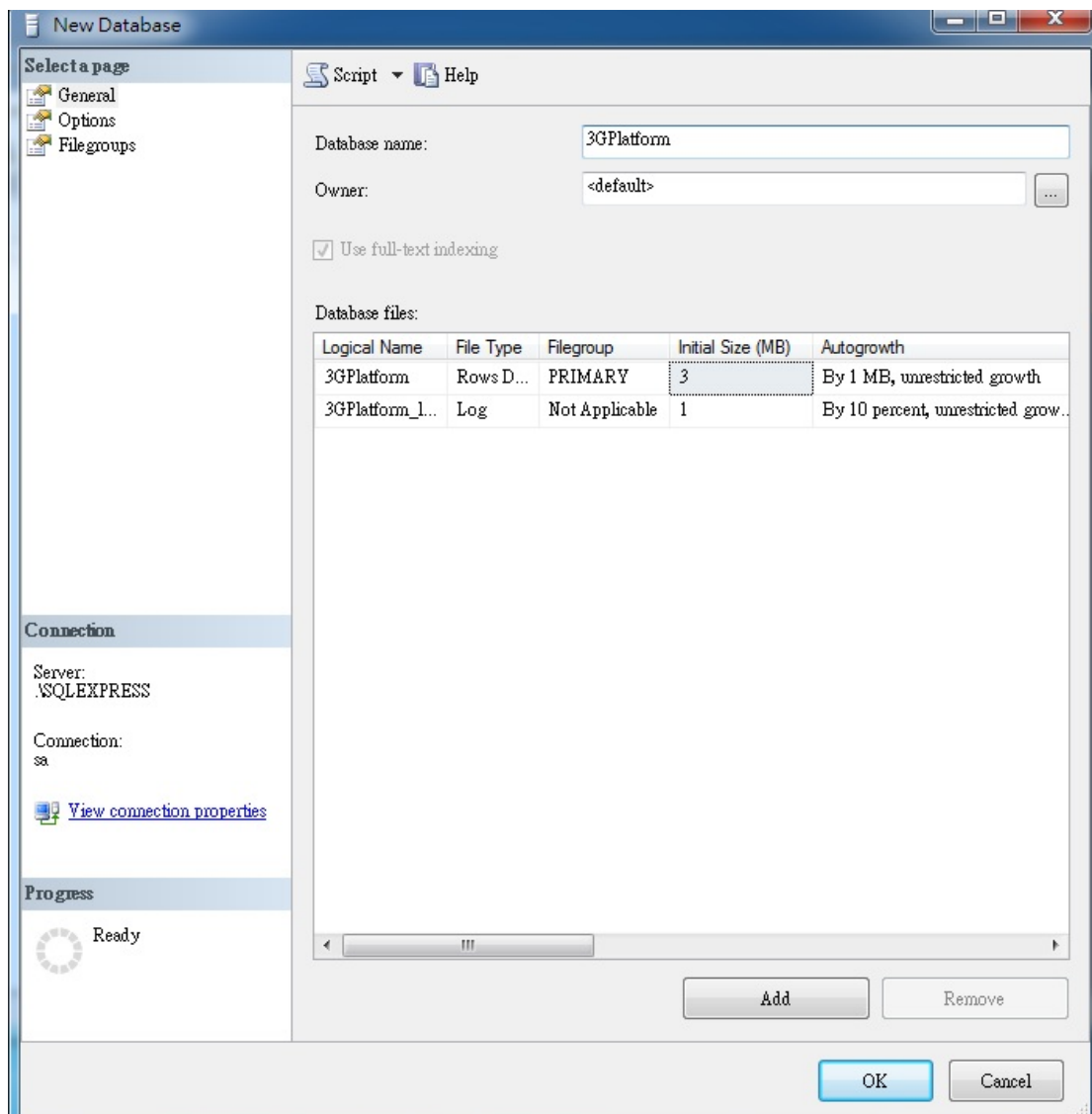
1.3.4 Start Microsoft SQL Server 2008 → Server name: .\SQLEXPRESS (in this example)  
→Authentication: SQL server Authentication → Login: sa → Password → Connect.



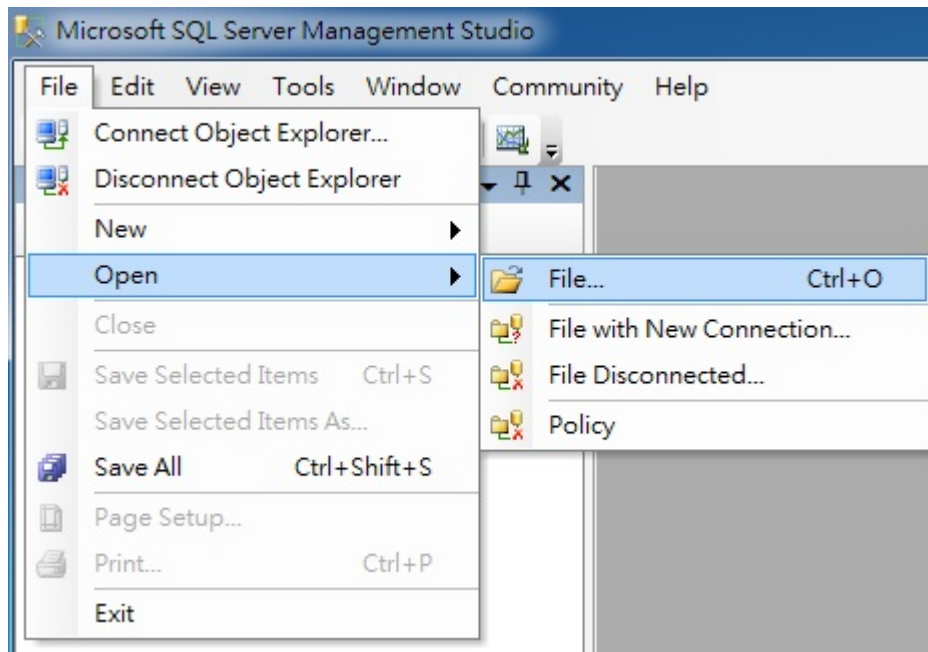
1.3.5 Right click on Databases, and select New Database.



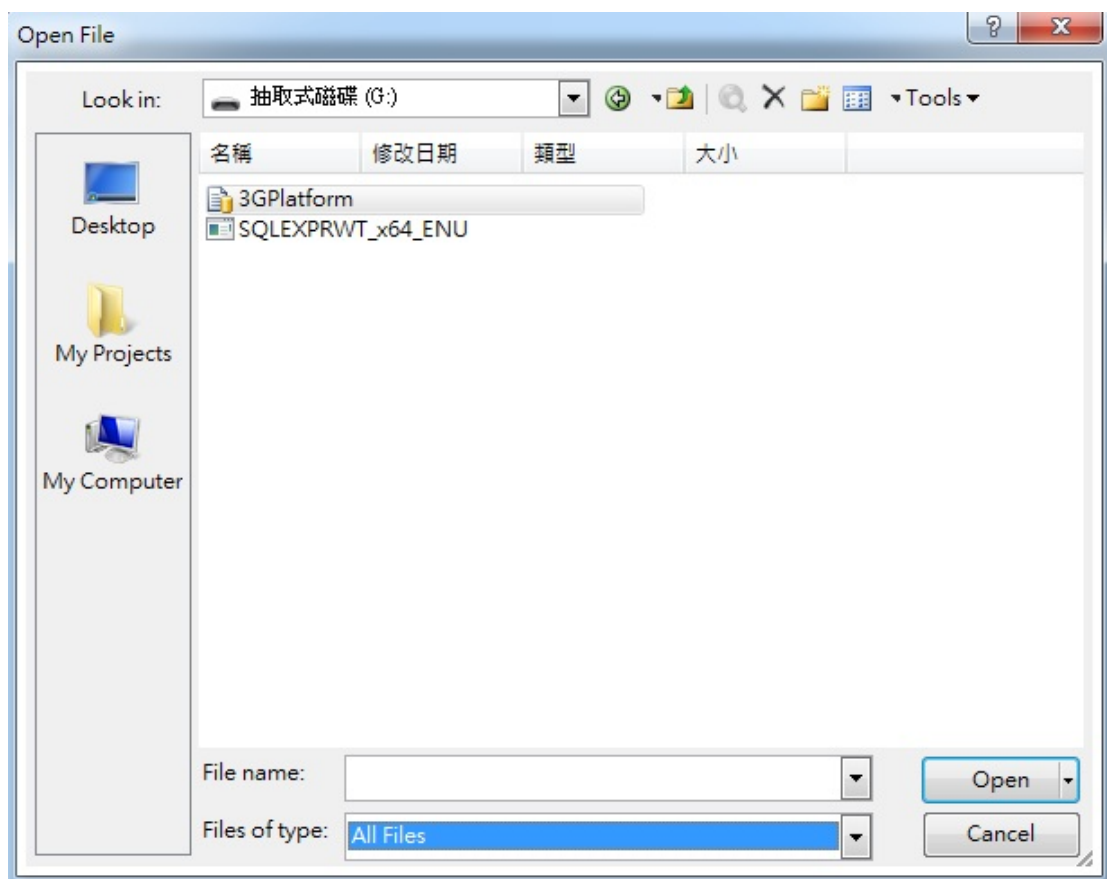
1.3.6 Type in 3GPlatform on Database name.



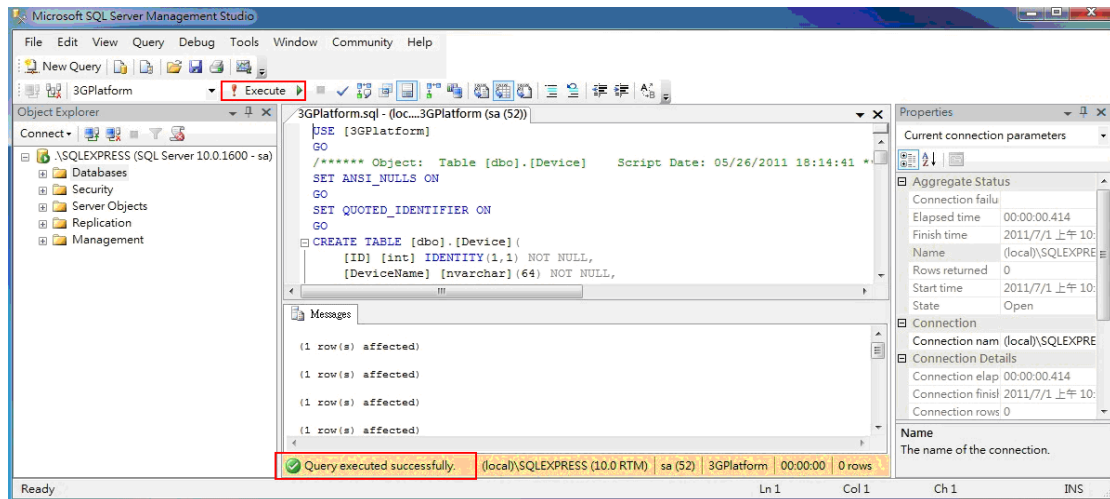
1.3.7 Create data structure now, Go to File → Open → File.



1.3.8 Select the file 3GPlatform.sql → Open.



1.3.9 Click on !Execute to proceed → Look for Query executed successfully on the bottom of the screen → Close SQL Server management Studio.

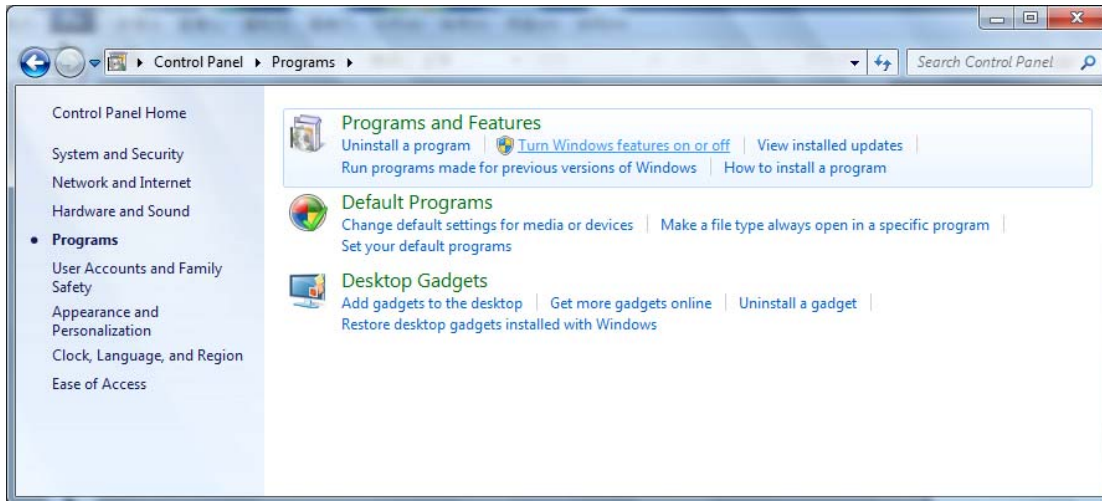




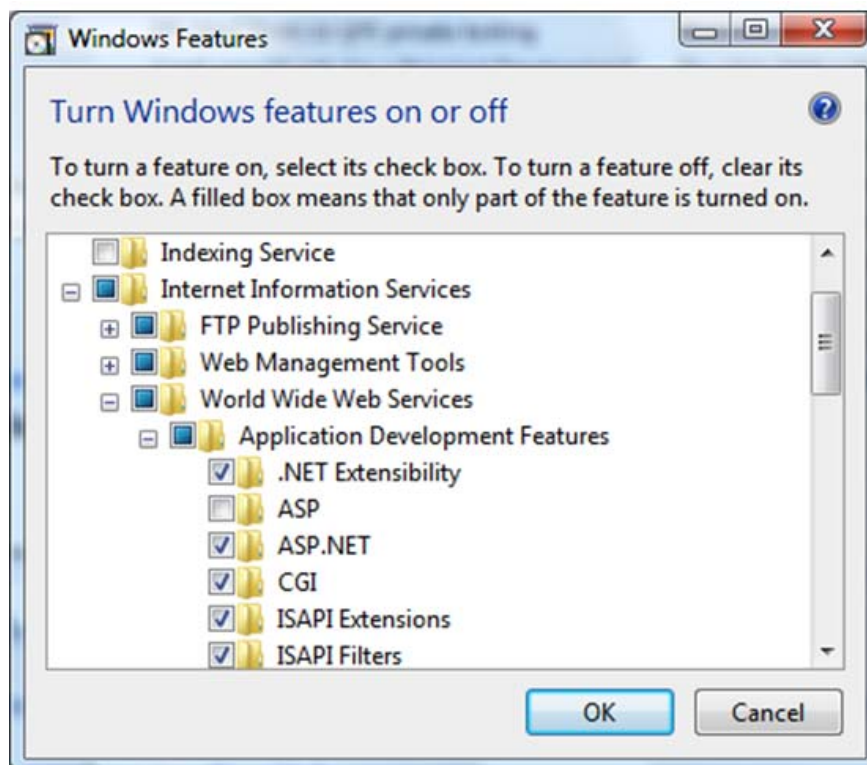
## 2. Web Server Installation and Configuration.

### 2.1. Install Internet Information Services (IIS)

2.1.1. Go to Control Panel → Programs → Turn Windows features on or off



In the Windows Features dialog, expand "Internet Information Services", "World Wide Web Services", "Application Development Features" and then enable the "ASP.NET" checkbox;

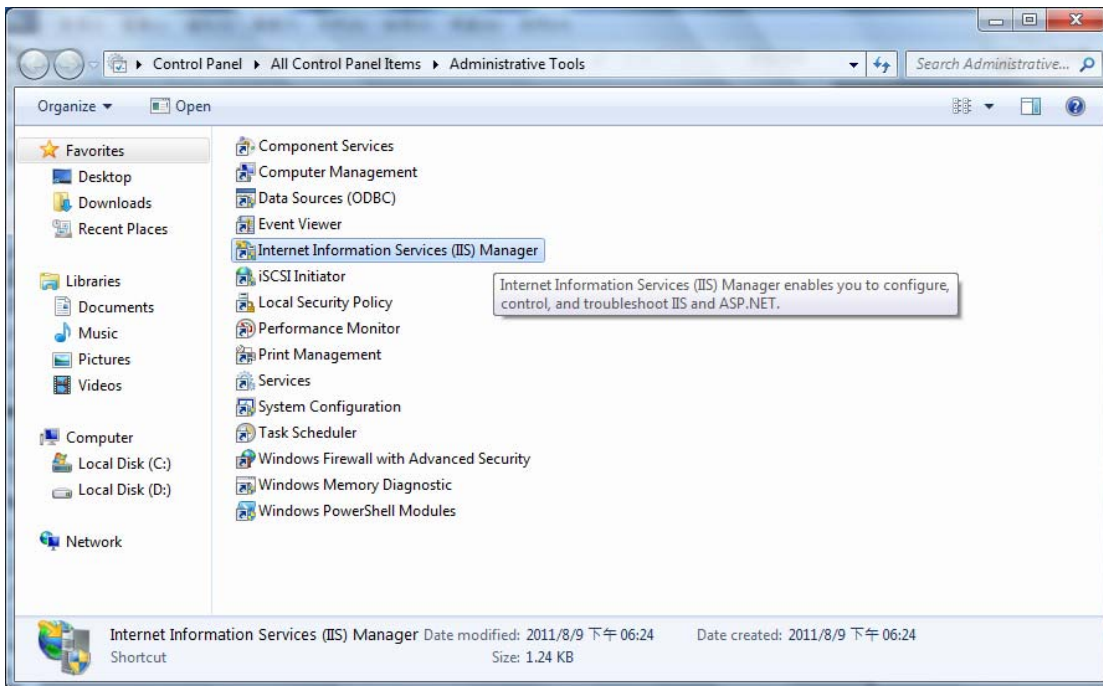


2.1.2. Then update .NET Framework 4.0 from the link below:

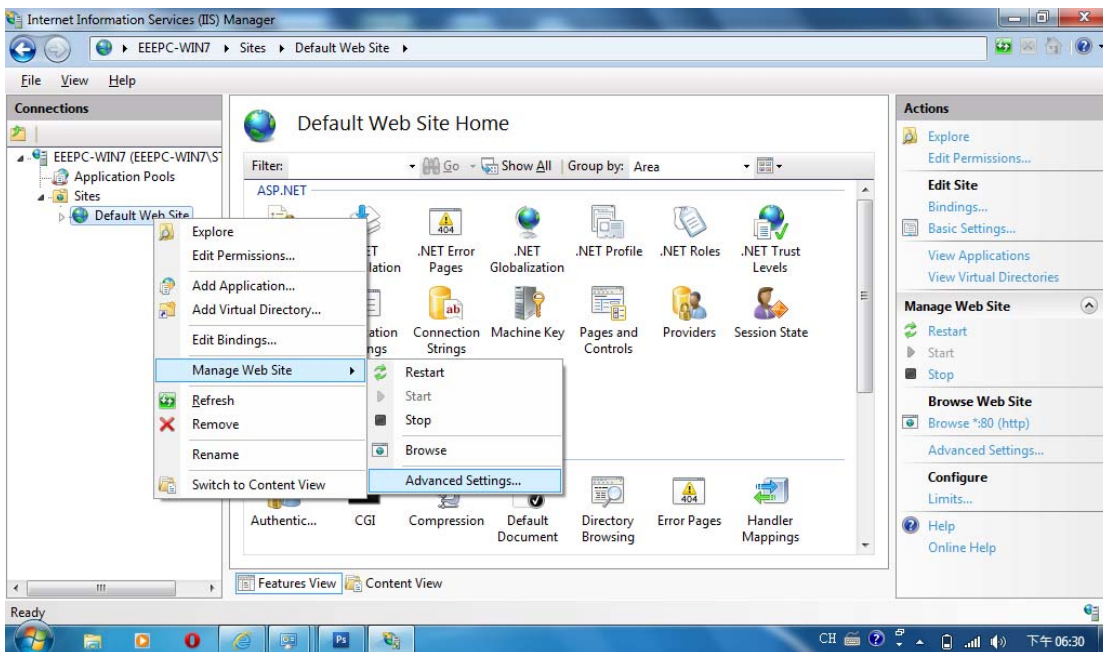
<http://www.microsoft.com/download/en/details.aspx?id=17718>

Select languages needed and download.

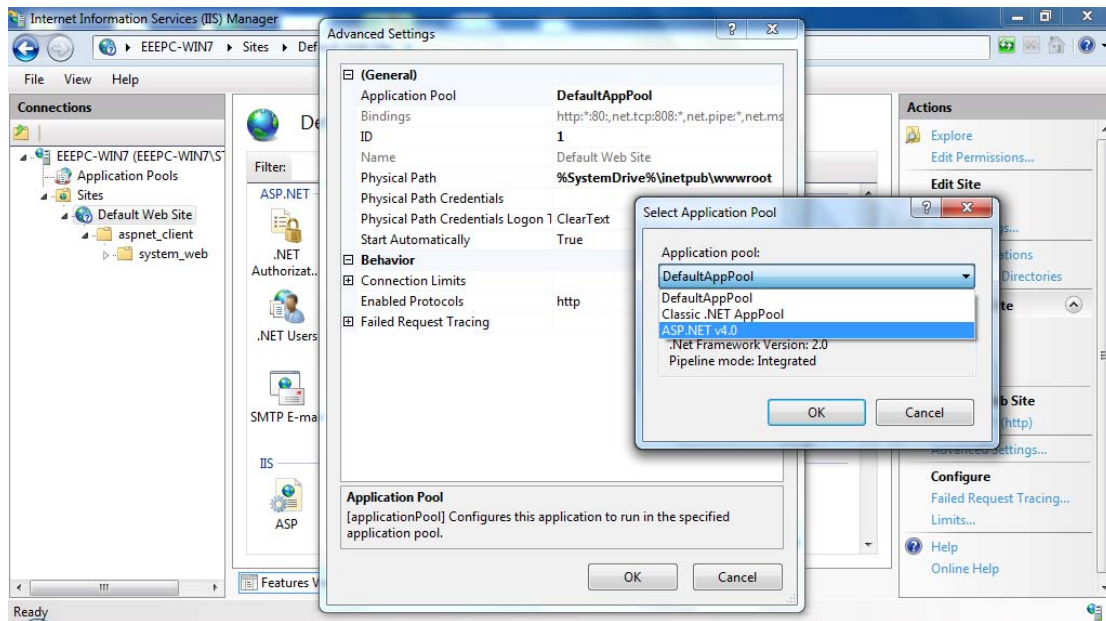
2.1.3. After install .NET Framework 4.0, go to Control Panel -> All Control Panel Items -> double click Internet Information Service (IIS) manager.



2.1.4. In IIS dialog, right click on Default Web Site → Expand the Site, right click on Default Web Site → Manager Web Site → Advanced Settings.

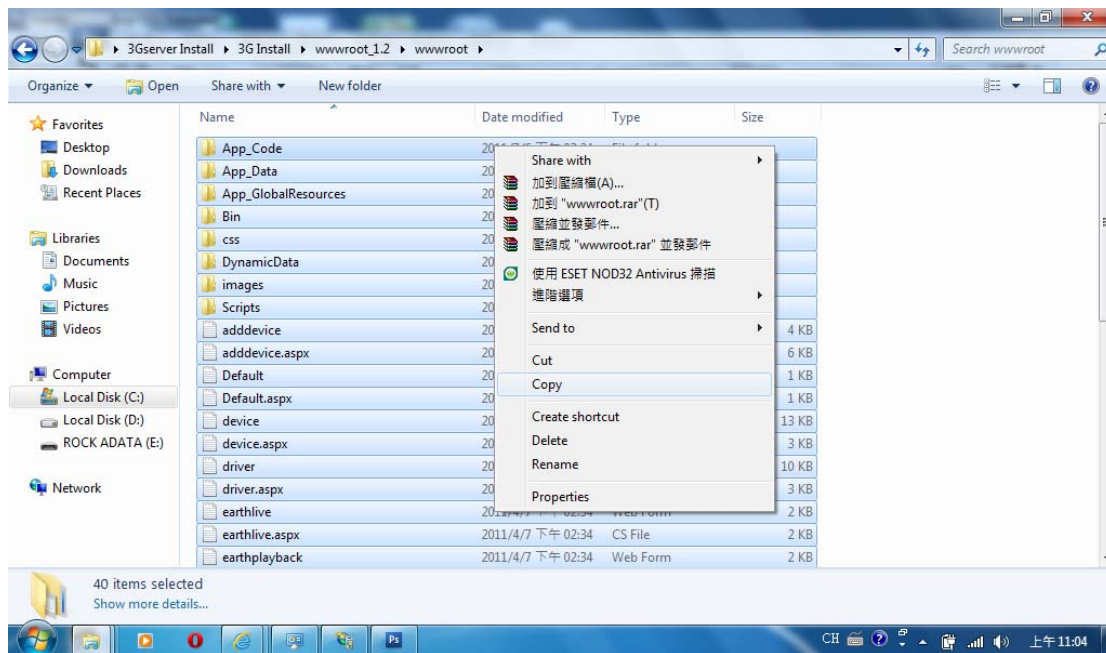


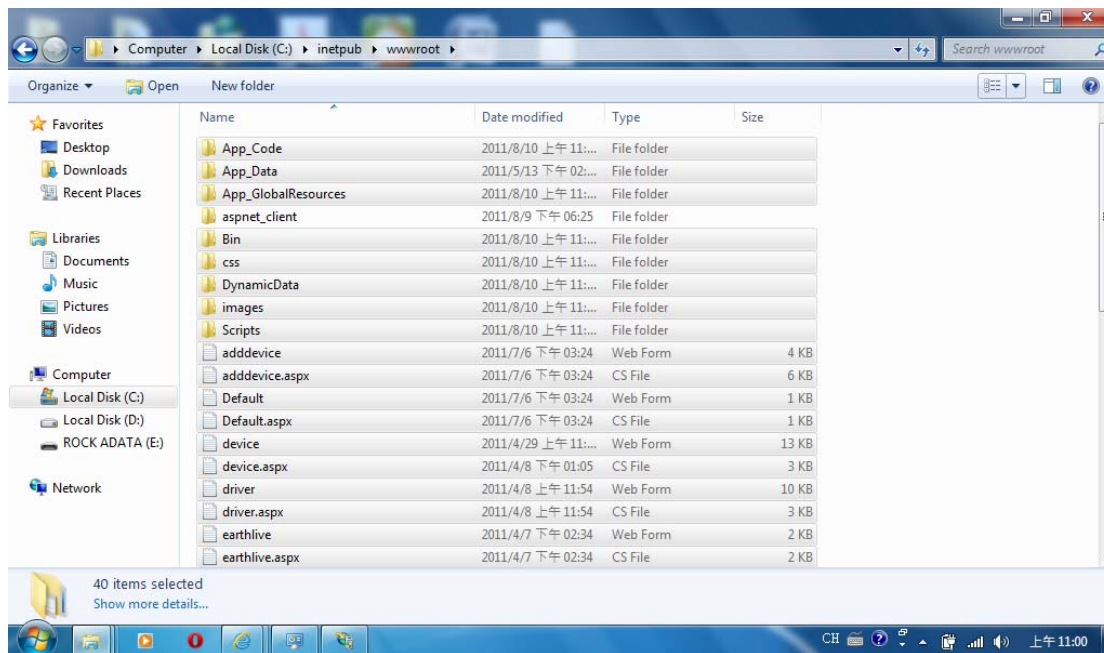
### 2.1.5. Change DefaultAppPool to ASP.NET v.4.0 → Confirm.



### 2.1.6. Unzip wwwroot.zip

### 2.1.7. Copy and paste all files to C:\inetpub\wwwroot\



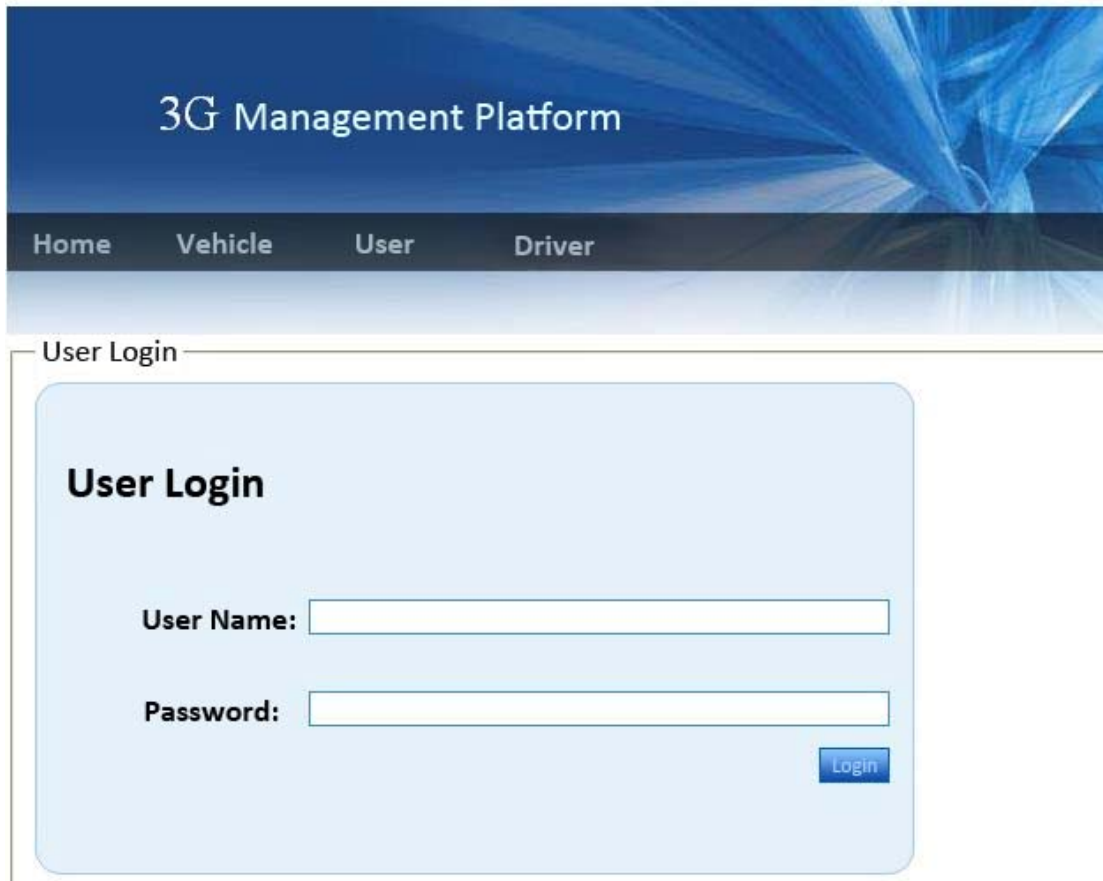


2.1.8. Use Notepad to open C:\inetpub\wwwroot\web.config. There are two things that need to change.

2.1.8.1. Search for all “Data Source=”related. Replace the words after the equal sign with the server name of SQL Server Management and database. For example, Data Source=.\SQLEXPRESS

2.1.8.2. Search for all “Password=”, and replace the words and numbers after the equal sign with the set password.

2.1.9. Open the web browser, enter the IP of this PC (Server), it will shows the login page when install succeed. The default login name and password are root / root, you may revise them after login.



3G Management Platform

Home Vehicle User Driver

User Login

### User Login

User Name:

Password:

Login



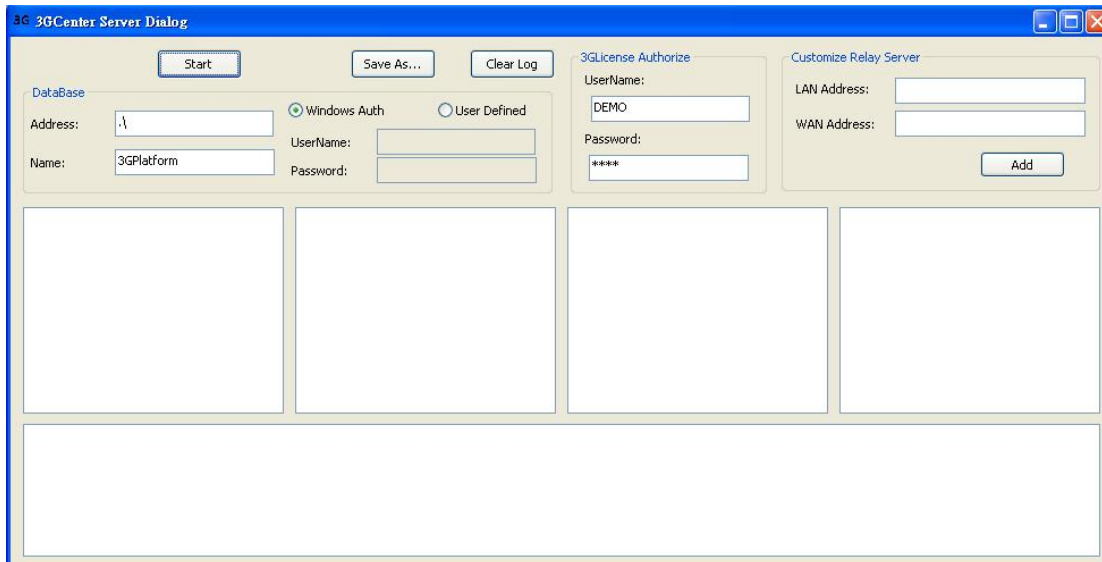
## 3. 3G Server Installation Setup

### 3.1. 3G Server Setup

3.1.1. Unzip 3GServer\_x.x.x\_xxxxxx.zip

3.1.2. Open config.ini with Notepad. Search for all "CenterServer\_Address=" related. Change all to ip address or domain name.

3.1.3. Open 3GCenterServer.exe, shown below.



3.1.4. DataBase Address: Enter the server name in 1.3.6 (e.g. 3GPlatform), then enter login account and password, press Start button to run the server.

3.1.5. Open 3GTransServer.exe.