
CMS9000(V1.00.01)

Client Software

User Manual

Table of Contents

1. Welcome to CMS9000.....	1
1.1 Overview.....	1
1.2 Computer Disposition Request.....	1
1.3 Convention.....	1
2. Install & Uninstall.....	2
2.1 Install the Software.....	2
2.2 Uninstall Software.....	3
3. Basic Operations.....	3
3.1 User Login.....	3
3.2 GUI Introduction.....	4
4. Device Management.....	7
4.1 Region Configuration.....	8
4.2 Device Configuration.....	9
Add Device.....	9
4.3 Group Configuration.....	11
4.3.1 Group.....	11
4.3.2 Channel.....	11
5. Preview.....	12
5.1 Non-cycle Preview.....	13
5.1.1 Play by Node.....	14
5.2 Cycle Play.....	15
5.2.1 Cycle Configuration.....	15
5.2.2 Cycle Play.....	16
5.3 Preview Control.....	16
5.4 Recording & Snapshot.....	17
5.4.1 Recording.....	17
5.4.2 Snapshot.....	18
6. PTZ Control.....	18
6.1 RS-485 Parameters Configuration.....	18
6.2 PTZ Control.....	19
6.3 Preset.....	20
6.4 Video Parameters Configuration.....	21
7. Recording.....	21
8. Playback.....	22
8.1 Remote Playback.....	22
8.1.1 Query.....	23
8.1.2 Playback Control.....	23
8.2 Local Playback.....	24
8.2.1 Query.....	25
8.2.2 Playback Control.....	26
9. Remote Configuration.....	27
9.1 Remote Recording Configuration.....	28
9.1.1 Encoding Parameters Configuration.....	28
9.1.2 Schedule Recording.....	29
9.1.3 Motion Detection Recording.....	31
9.1.4 Alarm Recording.....	36
9.1.5 Other Recording Modes.....	40
9.2 Alarm.....	40
9.2.1 Motion Detection Alarm.....	40
9.2.2 Signal Level Alarm.....	43
9.2.3 Video Loss.....	48

9.2.4 Video Tampering.....	50
9.3 Network Configuration.....	52
9.3.1 Basic Configuration.....	52
9.3.2 PPPoE.....	53
9.3.3 DDNS.....	53
9.3.4 NTP.....	54
9.4 Channel Configuration.....	55
9.4.1 Channel Display Settings.....	55
9.4.2 Video Mask.....	56
10. User Management.....	57
10.1 Add & Delete User.....	58
10.2 User Rights Distribution.....	59
10.3 Modify password.....	59
11. Software Configuration.....	60
12. Alarm Linkage.....	61
12.1 Alarm Arming & Disarming.....	61

1. Welcome to CMS9000

1.1 Overview

The CMS9000 is the client application specially developed for the embedded DVR.

1.2 Computer Disposition Request

- Operating System: Microsoft Windows XP/Windows7
- CPU: Intel Pentium IV 3.0 GHz or models above
- RAM: 1G or above DDR2
- LAN: 10Mbps or above
- Display: 1024 × 768 or above

1.3 Convention

Conventions as follows in this manual:

- 1) Click refers to left click mouse
- 2) Double click refers to double left click the mouse

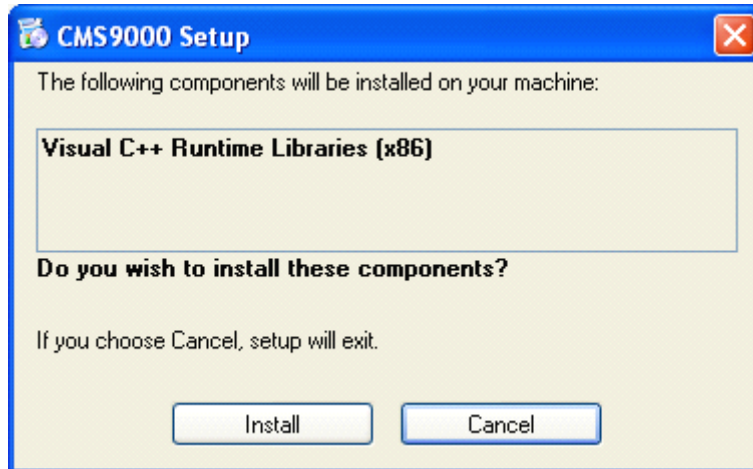
2. Install & Uninstall

2.1 Install the Software

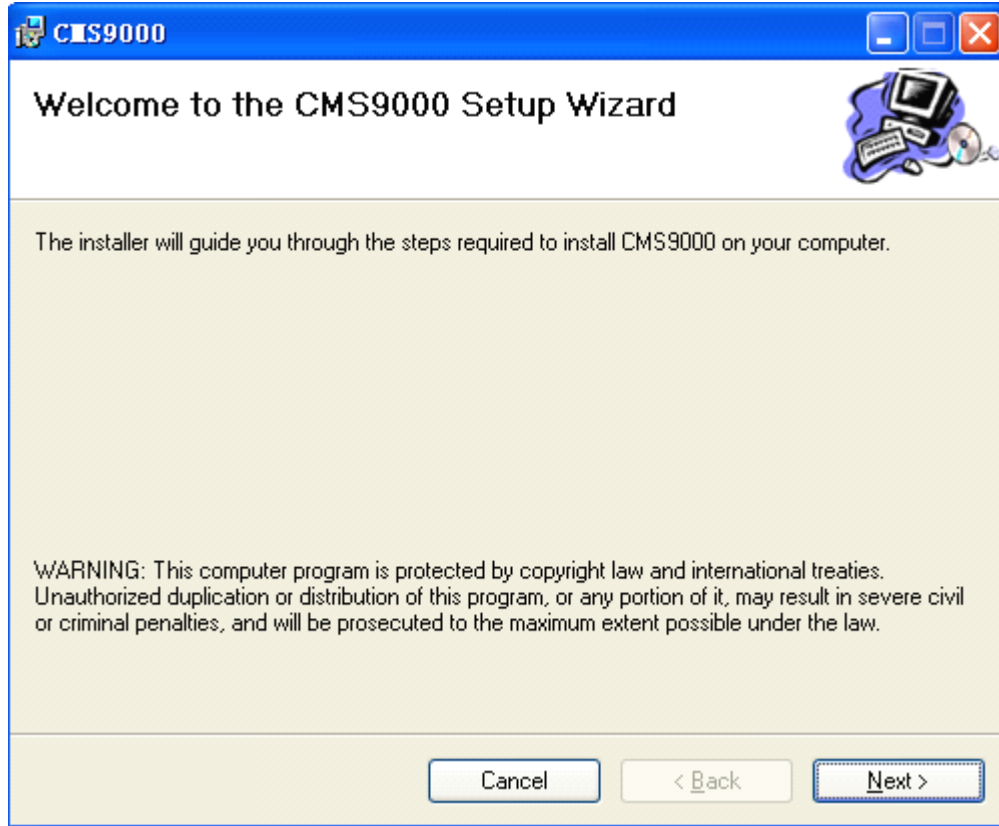


Double click the program file, Double click the program file following Install Wizard as shown below:

to enter the



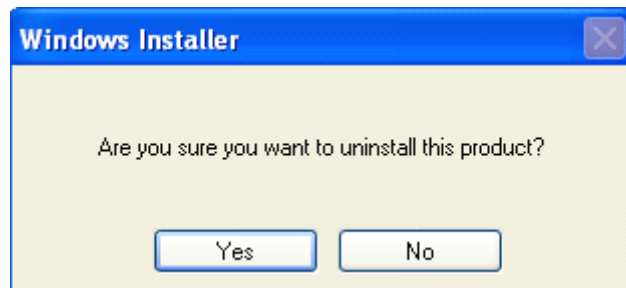
If Visual c++ Runtime libraries have installed, setup program will skip the step.



Click "Next" to start to install, Input the user information and software installation location according to the hints.

2.2 Uninstall Software

Enter start menu, select "All programs"→"CMS9000(v1.0)" →"Uninstall CMS", and the Install Wizard shown as below will pop up:



Click "Yes" and start to uninstall the software.

3. Basic Operations

Click "Start"→"All Programs"→"CMS9000(v1.00.01)"→"CMS9000(v1.00.01)"to start the software.

3.1 User Login

The default user name and password of CMS9000 administrator are "admin" and "12345".

When user opens the CMS software after registration, the login dialog box will pop up, shown as below:

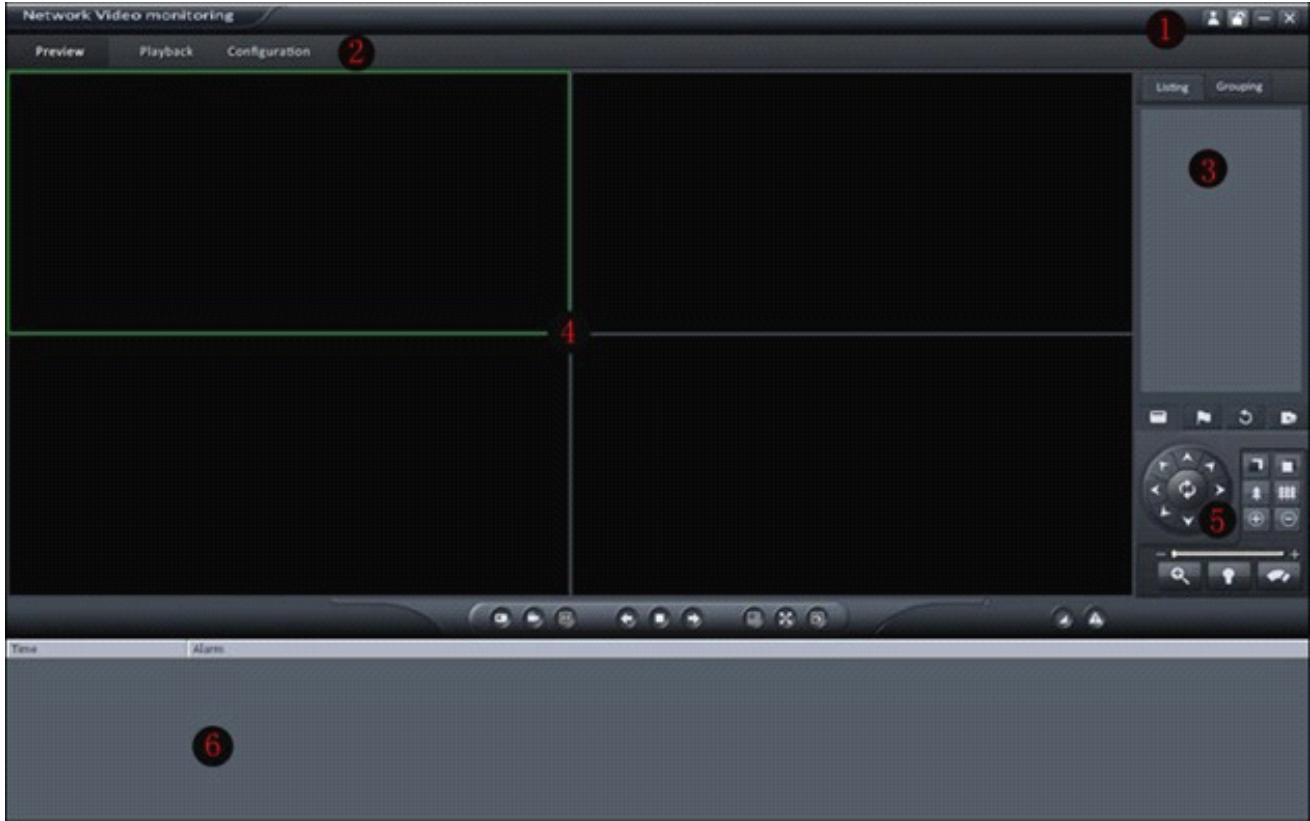


Input user name and password, and then click "Login" to start using the CMS software.

Click Automatic Login to automatically save the user name and password, then user does not need to input them again for future login. If user wants to cancel login, please click "Cancel".

3.2 GUI Introduction

The main interface of the client software is described as below:



System Panel:

Area	Description	Area	Description
1	Toolbar	2	Menu Bar
3	Device Area	4	Preview Area
5	PTZ Control Area	6	Alarm Info Area

Toolbar:

Button	Description
	Software user switch
	Lock button. When user clicks it, the icon will change to ; re-click it to activate login window and input the correct password to unlock the interface.
	Minimize
	Exit

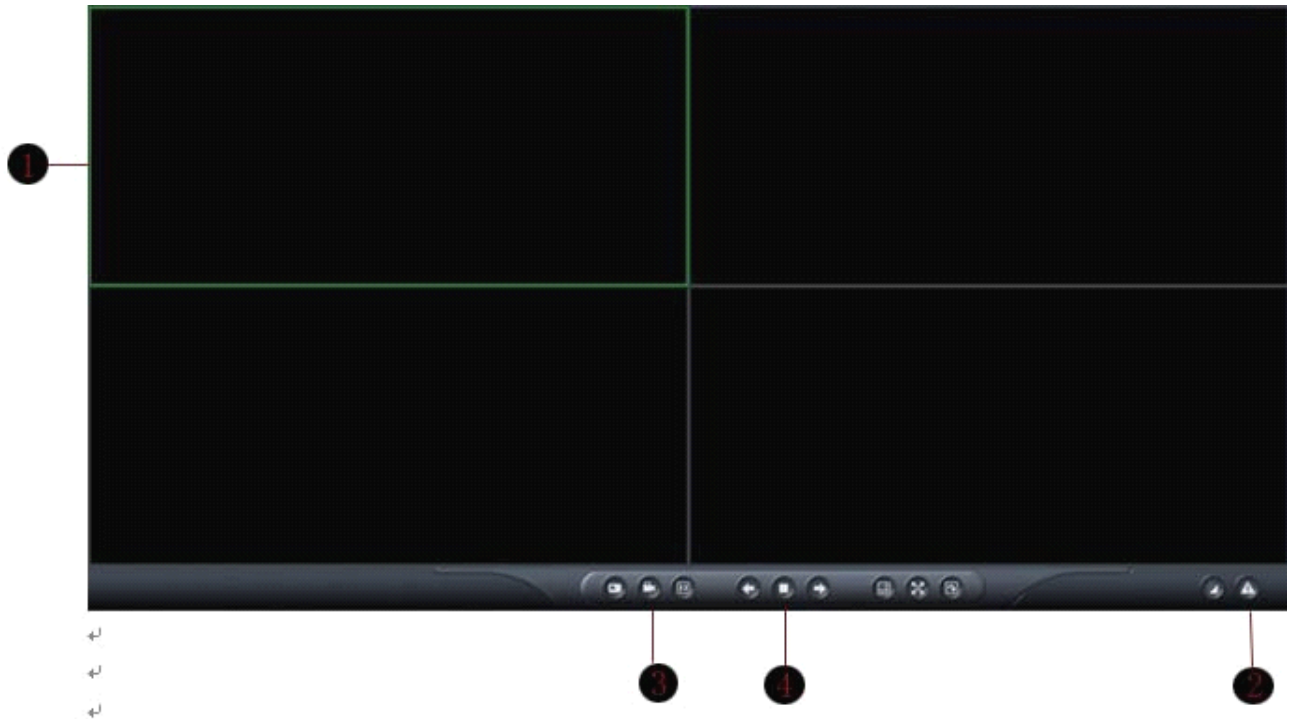
Menu Bar:

Area	Description
Preview	Enter preview interface for live view, PTZ control, video parameters adjust, etc. User is allowed to enter the software decoding interface.
Playback	Enter playback interface, including remote VOD and local playback
Configuration	Enter setup interface

Device Area:

Mode	Description
List	Display by list
group	Display by group





Preview Area:



Area	Description	Area	Description
1	Display windows	2	Alarm indicator



3	Basic functional buttons: play, record, capture	4	Advanced functional buttons: window division, full screen, page up, page down, resume cycle, pause cycle and show channel state.
---	---	---	--

PTZ Control Area:

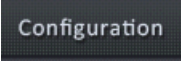
Icon	Options	Description
	PTZ	Control PTZ
	Presets	Configure and call the preset
	Sequence	Configure and call the sequence
	Video	Brightness, contrast, saturation, hue and volume adjustment

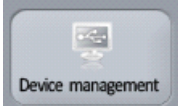
Alarm Information Area:

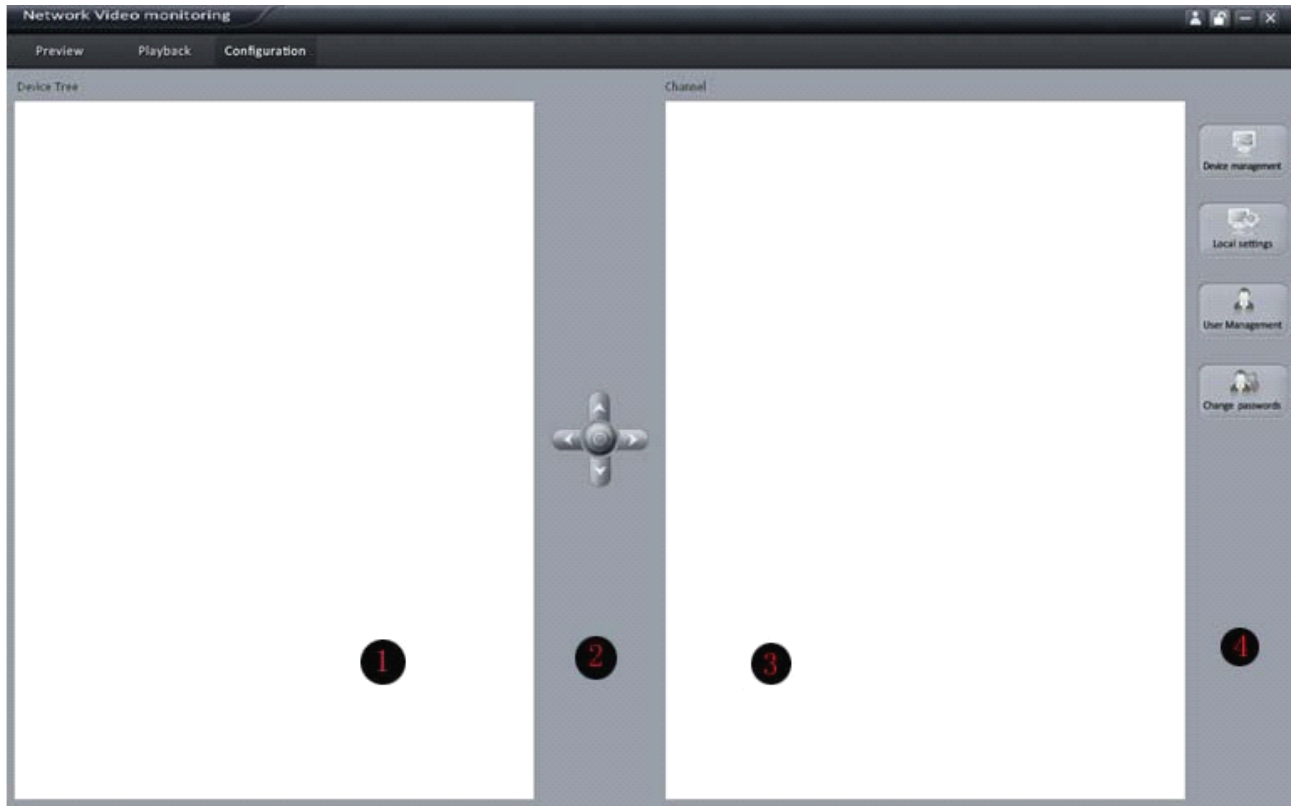
Display alarm time, information and alarm sign. The area size can be enlarged by dragging the upside of the area.

Click  to hide the alarm information area, or click  to resume the display.

4. Device Management

Before any operations, user needs to add device and configure it. Click  to enter

the configure to manage the device, and click  to manage the device.



Area	Description	Area	Description
1	List area	2	Configuration buttons
3	Group	4	Navigation bar

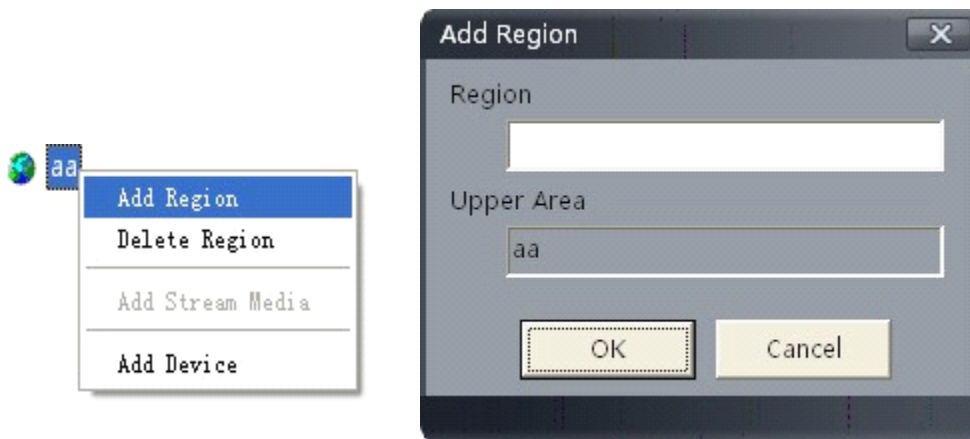
4.1 Region Configuration

Add Region

By default, the system has no area. User can right click it to add the region. Select "Add Region" from the menu to enter the Add Area dialog box, as shown in the following figure:



Enter the region name and then click "OK" to save the settings. The new region will be displayed under the site tree.



Delete Region

Select "Delete Region" to delete selected region.

4.2 Device Configuration

Add Device

Right click the area and select "Add Device" to enter the Add Device dialog box. Enter the information of device to be added.

Options	Description
Device Name	User-defined
Register Mode	Normal IP, Normal Domain
Device IP	IP address of the device
Port	Device port(default: 1115)
User Name	User name of the device (default: admin)
Password	Password of the device (default: 12345)
Channel No.	The channel number of the device
DNS Address	Used as IP address of IP server when adopting private domain, or else it can't be filled.
Belong to area	Display the area to which the current device belongs
Device serial	Used when adopting private domain, or else leave it blank
Manufacturer	Device producer
Device type	DVR or IPCamera

Normal IP mode

The default register mode is the "Normal IP". After input the device name, IP address, username, password, port and channel No. Click the "OK" button to finish adding device.

4.3 Group Configuration

4.3.1 Group

Right click in the empty area and you will see sub menu as shown :



Select "Add Group". Input the group name and click "OK".

Double click the group name to change the group name.

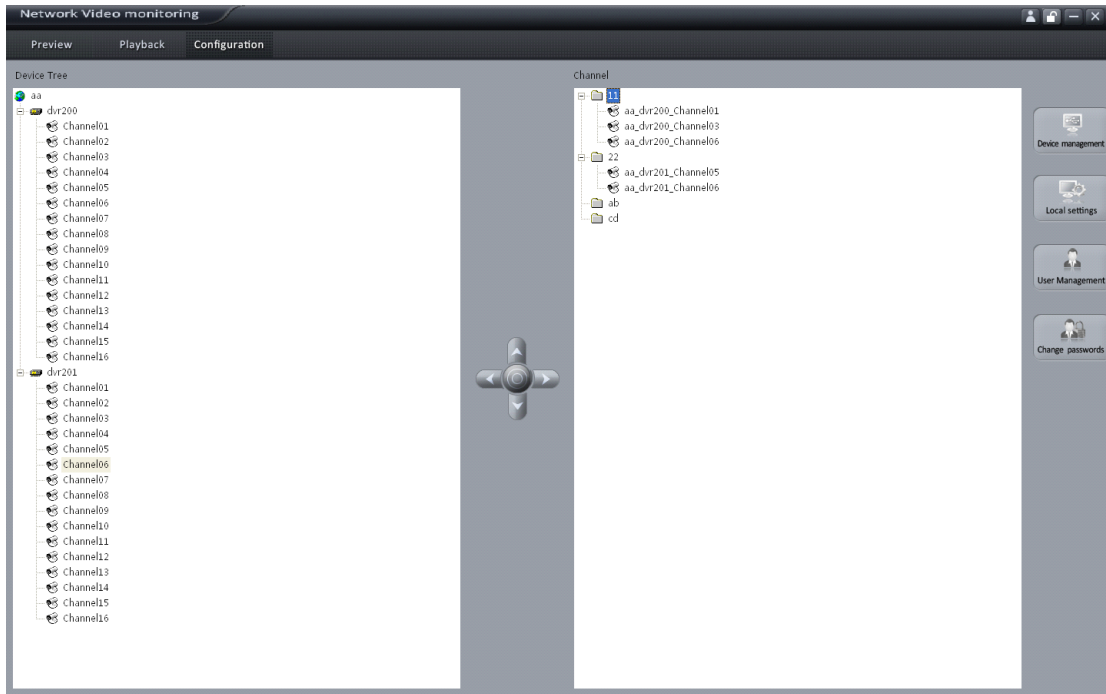
Right click the group name and select "Delete Group" to delete the selected group.

4.3.2 Channel



After adding the group, the channels in the site tree can be moved to the selected group.

Add Channel


Select the channel from the site tree, and click  key to move it to the selected group.



Select the device in the list area and click  key and all the channels of the device can be moved to the selected group.

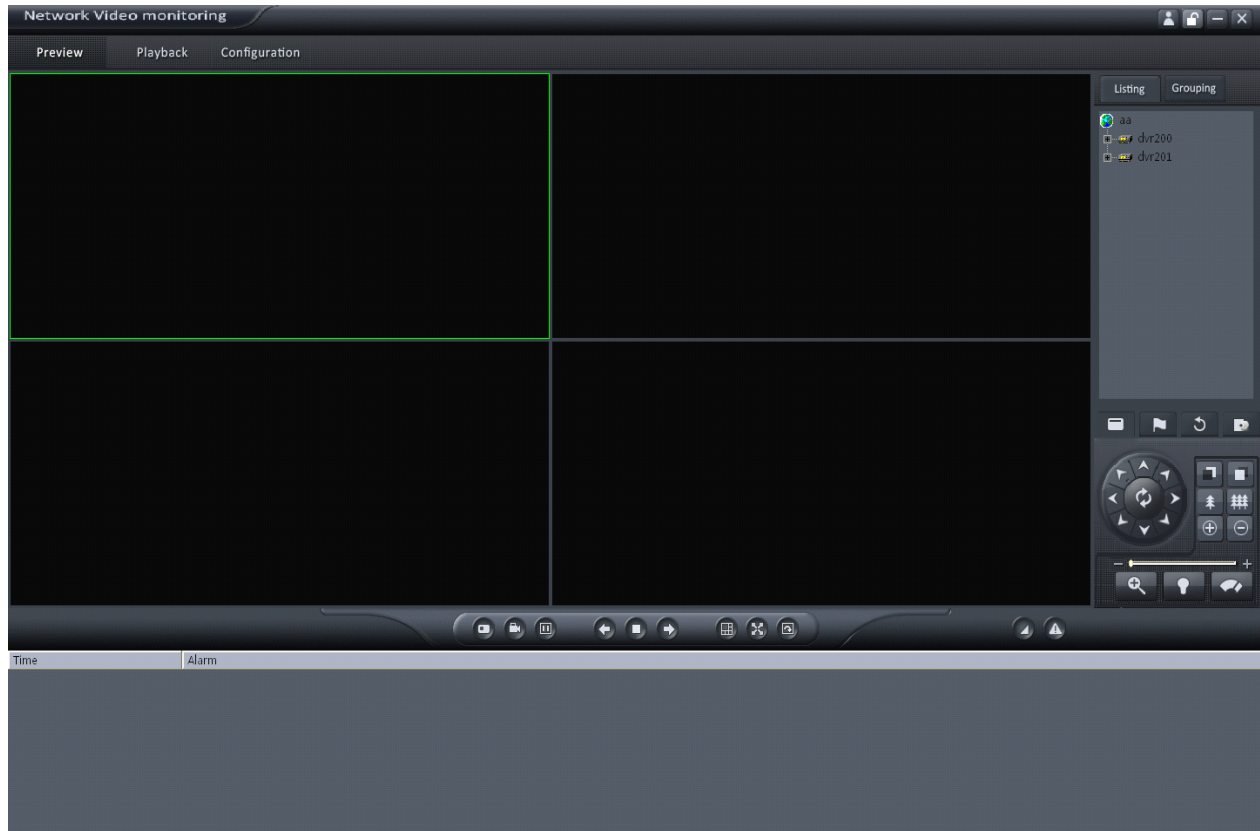
Use  and  keys to adjust the channel sequence in the group list.












Delete Channel

Use  key to delete the channel or group in the group area.

5. Preview


After configuring the device, click the  key to return to the preview interface. Click the  and  keys to switch between two modes.



Area	Description	Area	Description
	Stop		Record
	Snapshot		Window division
	Previous Page		Next Page
	Restore cycle play		Pause cycle play
	Full screen		Show/Hide list
	Clear alarm information		

5.1 Non-cycle Preview



After configuring the device, click the **Preview** key to return to the preview interface. Click the **Grouping** and **Listing** keys to switch between two modes.

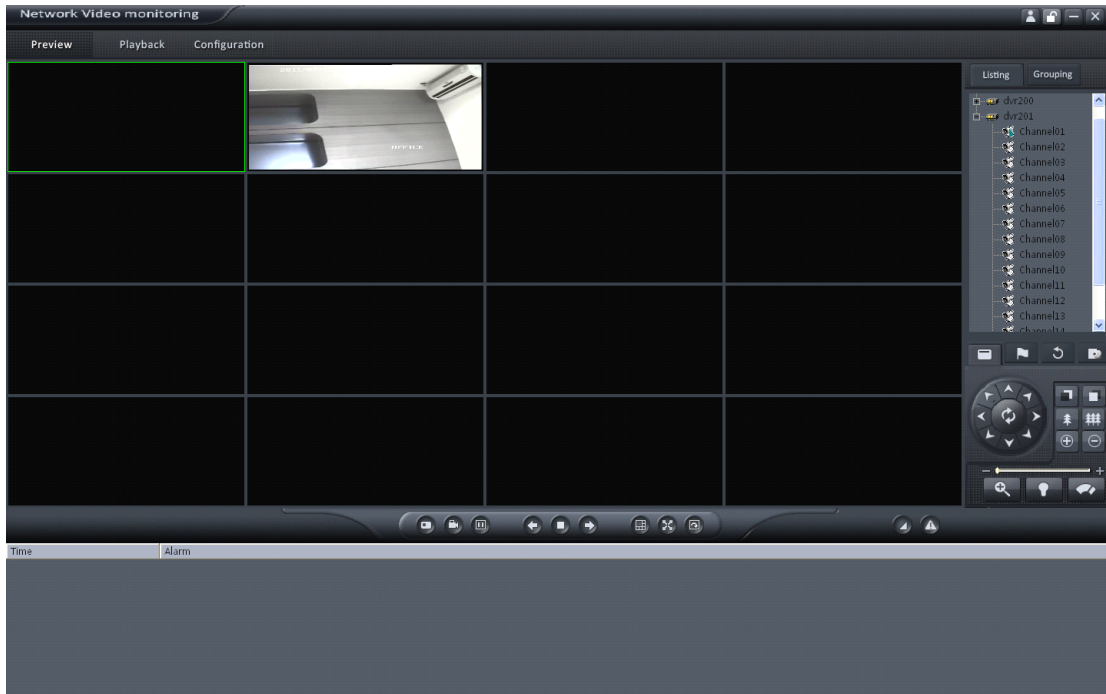
The play windows are divided into 2×2 mode as default, and up to 25 window divisions can be configured. User can click the button  to change window division mode.


5.1.1 Play by Node

Double click the channel name to preview the corresponding cameras. You can also preview them by dragging them to the play windows.



If the channel number is more than the window division number, user can click  and  to change the page to preview.

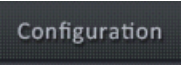


Right click in the play window and the menu will pop up. Click "Stop Preview" and the live view will stop. Meanwhile, the play icon will change to .



5.2 Cycle Play

5.2.1 Cycle Configuration

Click  key to enter the configuration interface. Then enter the local settings



interface by click button.


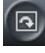


5.2.2 Cycle Play

Start cycle

Double click the group name and all the channels of the group begin to cycle in the selected window division from the first channel.

Pause/Resume Cycle

If the current window is in the device/group cycle mode, Click  key to pause all the cycling window divisions, Click  key to restore all the cycling window divisions.

5.3 Preview Control

Full Screen

In preview mode, user can click  key to preview in full screen.

Enlarge

When in the multi-screen preview mode, double click the selected image to enlarge it, and double click again to resume.

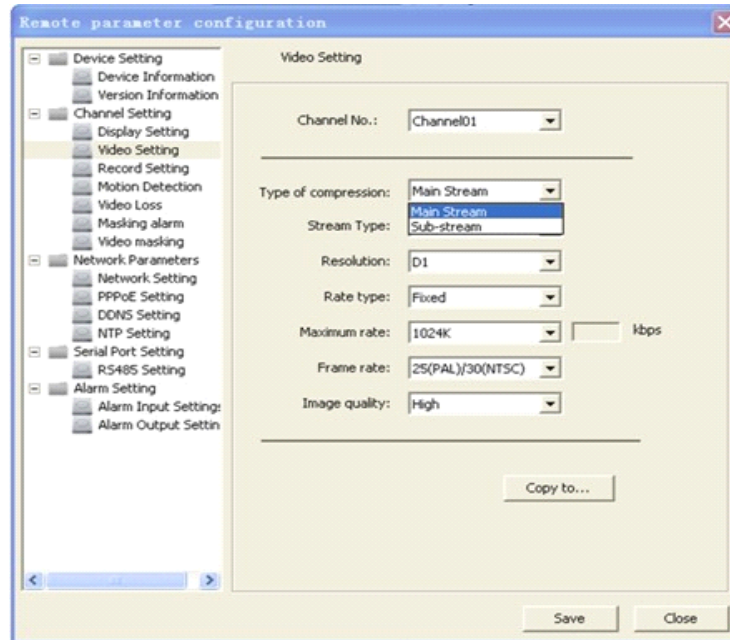
If user is previewing the zero-channel, double click it first time, it will enlarge the zero-channel, double click on window division in the zero-channel video, it will enlarge that channel to fill the zero-channel video. Double click it the third time, it will only change the zero-channel form single to multi display.

Main/Sub Stream

Main stream is for recording, sub stream is for network transmission when bandwidth is low. The stream will take effect after re-preview the device or channels.

Software use the main stream by default, if needed, user can switch to sub stream to preview.

Right click channel name and select "Main Streams" or "Sub Streams" to change the channel stream type.



Note: the sub stream preview needs the device to support, or else the sub stream preview will be failed.

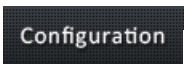

5.4 Recording & Snapshot

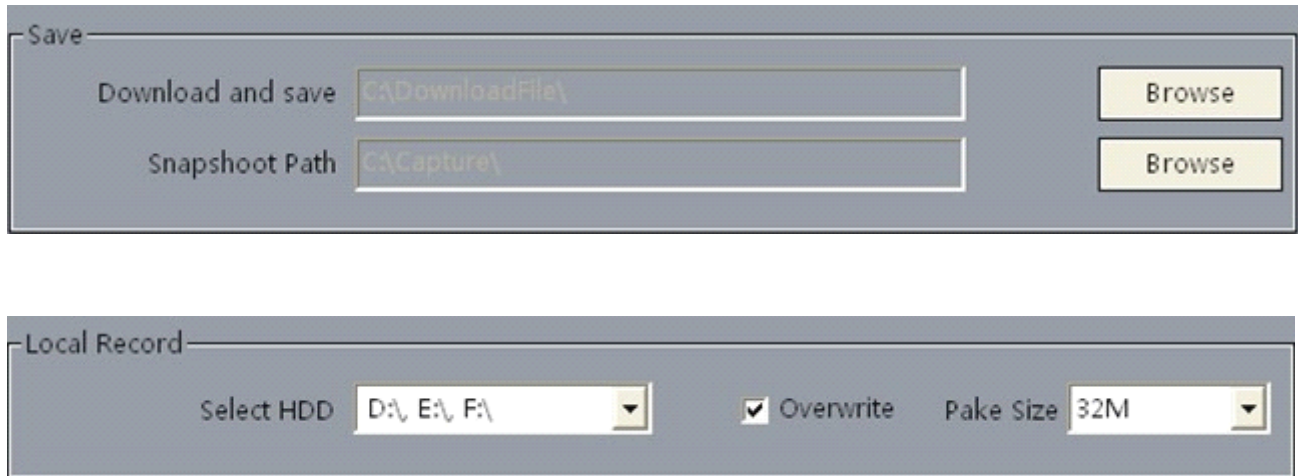
Recording and Snapshot are only available in the live view mode.

Note: If the channel is in the recording mode, click "Stop" button to stop recording, and the preview are stopped as well.

5.4.1 Recording

Record Disk Configuration

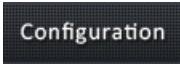
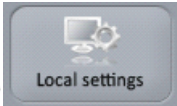
Click   to enter the Local Recording Settings interface. Select the saving hard disk of recorded files in "Store".



Instant Recording

After recording, the hint window with index of recorded files will pop up; click the hint to open the target folder.


5.4.2 Snapshot

Click  →  to enter the Local Recording Settings interface.

Path configuration

The default saving path is C:\Capture. User may click the button to change the saving path.

Snapshot

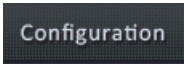
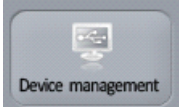


In preview mode, click the button  to snapshot.

After picture captured, the hint window with capture index will pop up; click the hint to open the target folder.

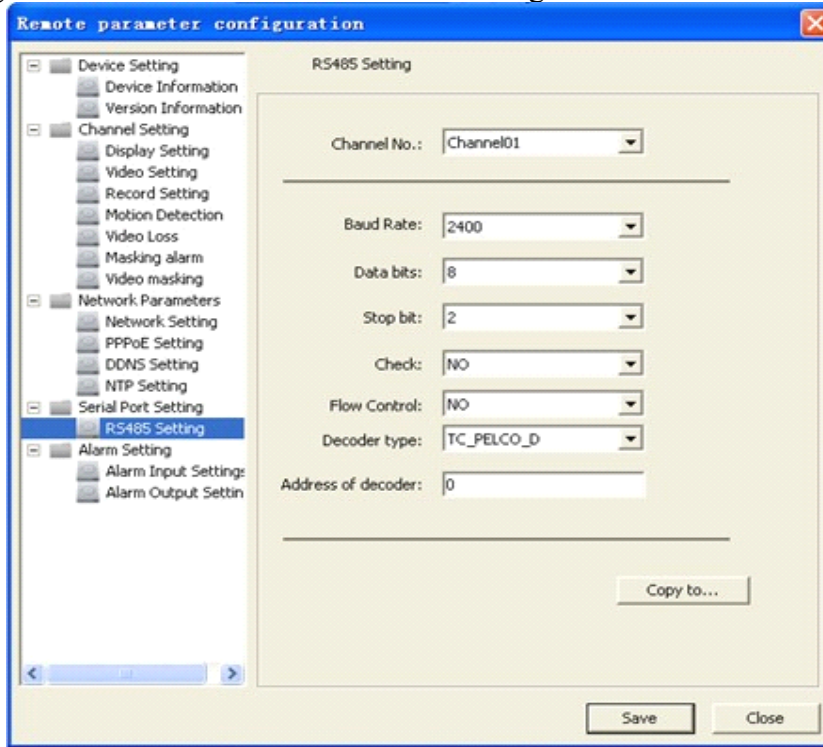
6. PTZ Control

6.1 RS-485 Parameters Configuration

Before PTZ operations, please make sure that RS-485 parameters has been correctly configured by CMS9000 software.

Click  → , and then click the device and select the “Remote Settings”, Click  then select  RS485 Setting.


RS-485 configuration must be the same with PTZ configuration.



6.2 PTZ Control

Return to preview interface and user can control PTZ.


There are 8 keys to control PTZ directions, and the slide bar is used to change PTZ speed, which is adjustable from level 1 to 7, with the default speed of 4.

Click , key to start auto scan. Click the function keys on the right to adjust focus, iris and zoom.




6.3 Preset

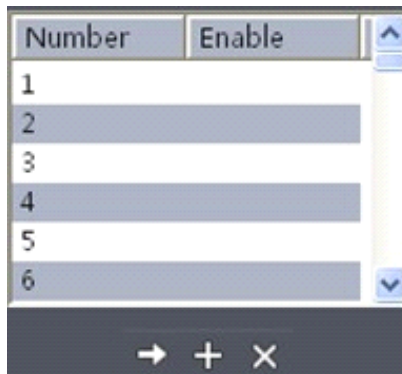
Select one channel and click the  key on the PTZ control panel and enter preset edit window.

Select one play window, and right click the preset list or click  to add, modify and delete preset.


Move the PTZ to the position you want, and click "Add" then click OK to finish.

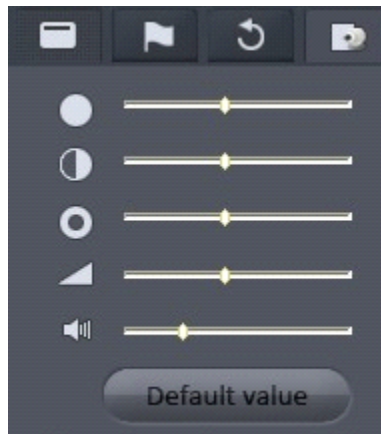
Click  to call it.



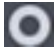


Right click preset to modify or delete this preset, click  to delete preset as well.



6.4 Video Parameters Configuration

Click the  key to show the video parameters configuration menu.



Button	Description	Button	Description
	Brightness		Contrast
	Saturation		Volume
	Hue		

7. Recording

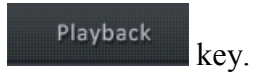
Click  and then  to enter record setting interface

It can set the record file store partition and the max record file size in the store setup.

HDDs selection	<input checked="" type="checkbox"/> Choose saving hard disk of the recorded files
Cycle record	<input checked="" type="checkbox"/> Each disk space is less than 2G, the earliest recorded files will be overwritten to continue recording.
	<input type="checkbox"/> When the disk is full, the "Disk Clean" will pop up, after cleaning disk and if the disk space is larger than 2G, the schedule recording will restart.
Record file size	Each record file max size, 32M/64M/128M/256M can be selected

8. Playback

Two playback modes are provided by the client software and can be selected by clicking

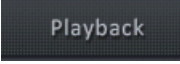


key.

Remote Playback: Searching the recorded files from hard disk of DVR or storage server.

Local Playback: Searching the recorded files from hard disk of PC.

8.1 Remote Playback

Click  from the menu bar and then select "Remote Playback" from the drop-down menu to enter the remote Playback interface.

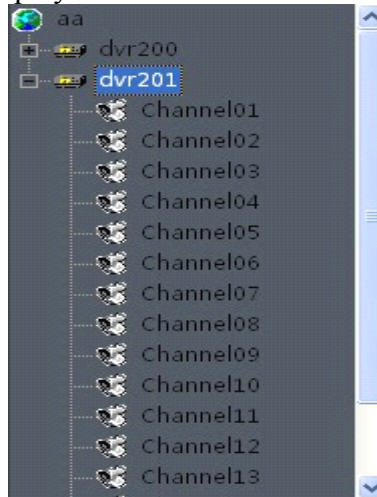


Area	Description
1	System Area
2	Device Area
3	Playback Windows
4	Query Area

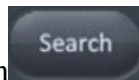
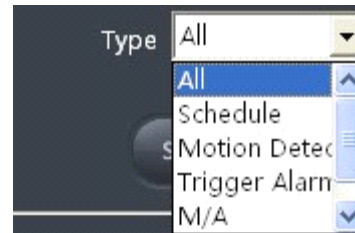
5	Play Control Buttons
---	----------------------

8.1.1 Query

Step1: Select the window for playback and the channel from the site tree.



Step2: Select recorded file type and query time.







Step3: Click the button to search the matched recorded files.


8.1.2 Playback Control

Descriptions on playback buttons:

Button	Description	Button	Description
	Open/Close sound		Capture
	Play		Download
	Faster		Slower

	Stop		Pause
	Step forward		Step backward

Record File Download


After searching out the recorded file, you can click  to download file to local PC. You may click on message to open the download saving directory.

After completion of download, the system will pop up the information box indicating the record files saving path.

The default saving path for the record clips and download is C:\DownloadFile\, User may go

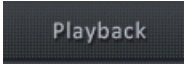
to  →  to change the saving path.

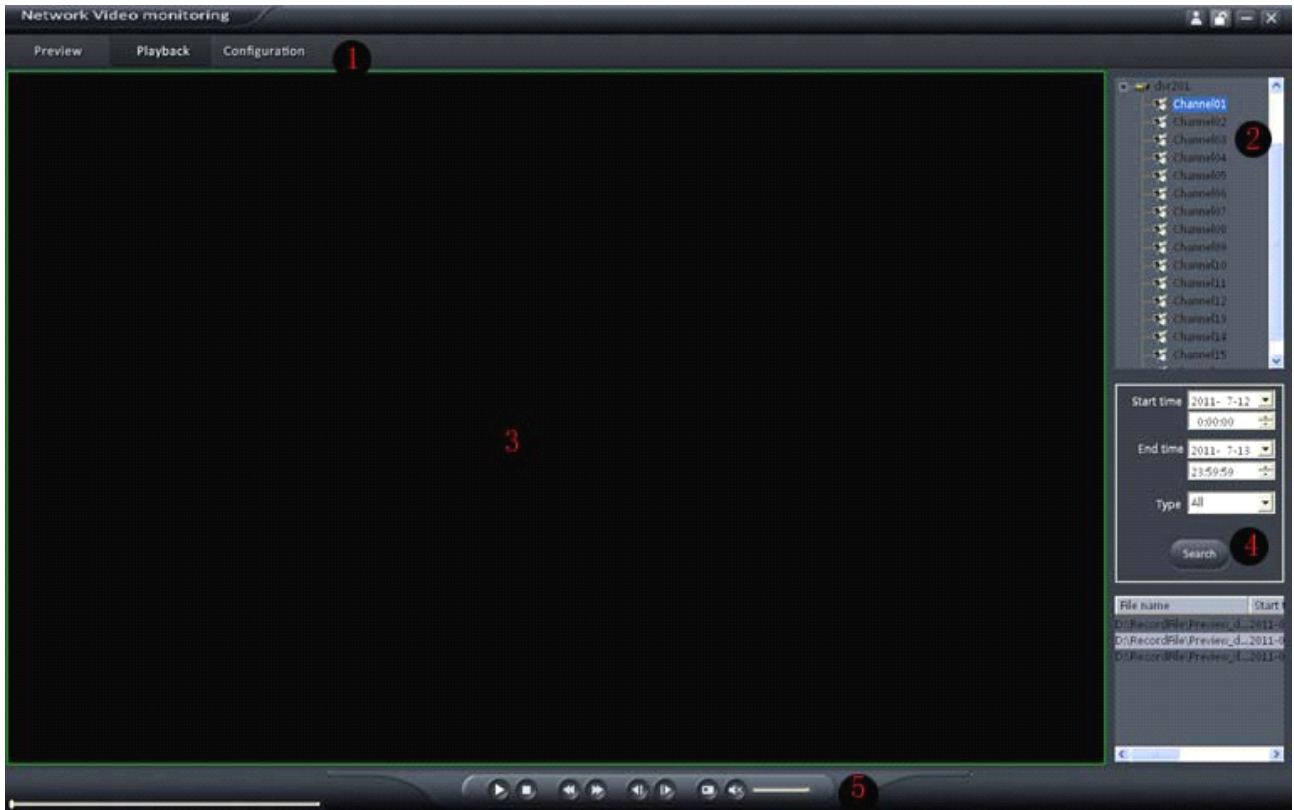
Playback Picture Capture

User can also get the remote capture by clicking  button, and you will see the pop up message. Click the picture to open the capture and click the path to open the capture folder.



8.2 Local Playback

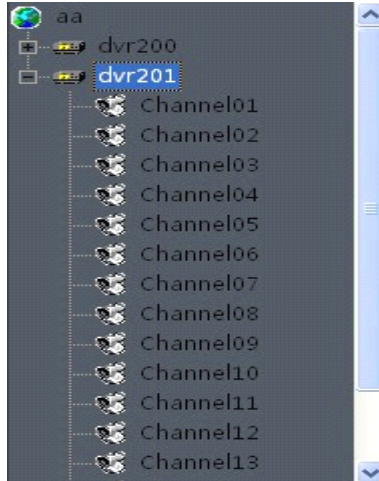
Click  from the menu bar and then select "Local Playback" from the drop-down menu to enter the remote Playback interface.



Area	Description
1	System area
2	Device area
3	Playback windows
4	Query area
5	Play control buttons

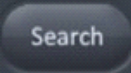
8.2.1 Query

Step1: Select the playback channel and window.



Step2: Select recorded files type and query time.



Step3: Click  key to search the matched recorded files.

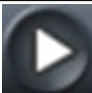



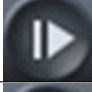

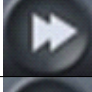


Step4: Click the button  to start playback.


8.2.2 Playback Control

When playback has succeeded, the play window will be shown as below:

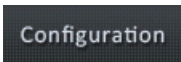



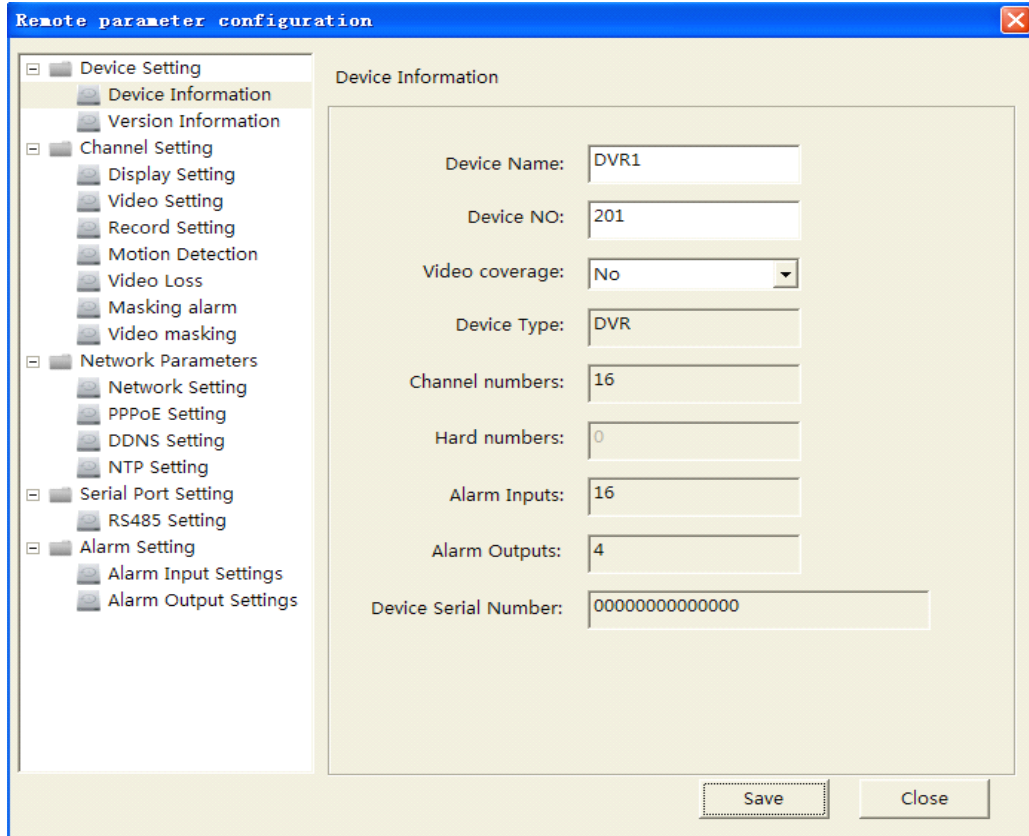
Descriptions of playback buttons:

Button	Description	Button	Description
	Play		Pause
	Stop		Capture
	Step Forward		Step Backward
	Faster		Slower
	Open/Close sound		

In the single frame playback mode, every time you click  button, the recorded files will play forward by one frame.

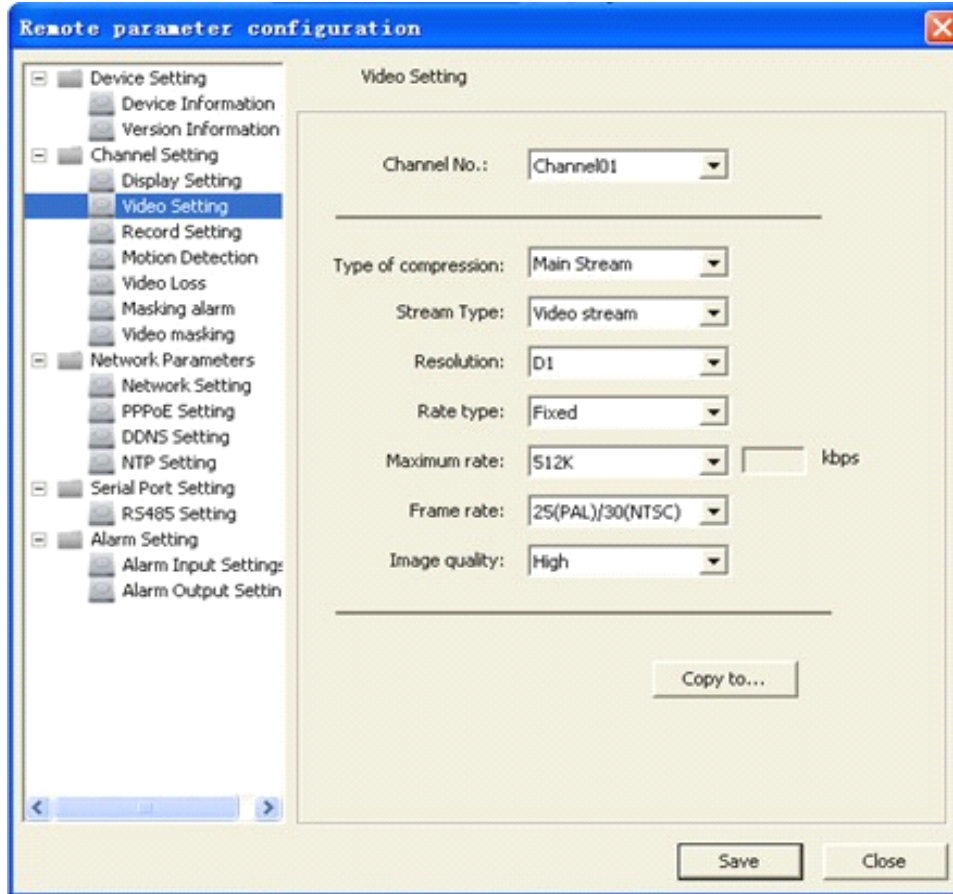
9. Remote Configuration

Click  → , and then click the device and select the "Remote Settings" to enter the following interface:



9.1 Remote Recording Configuration

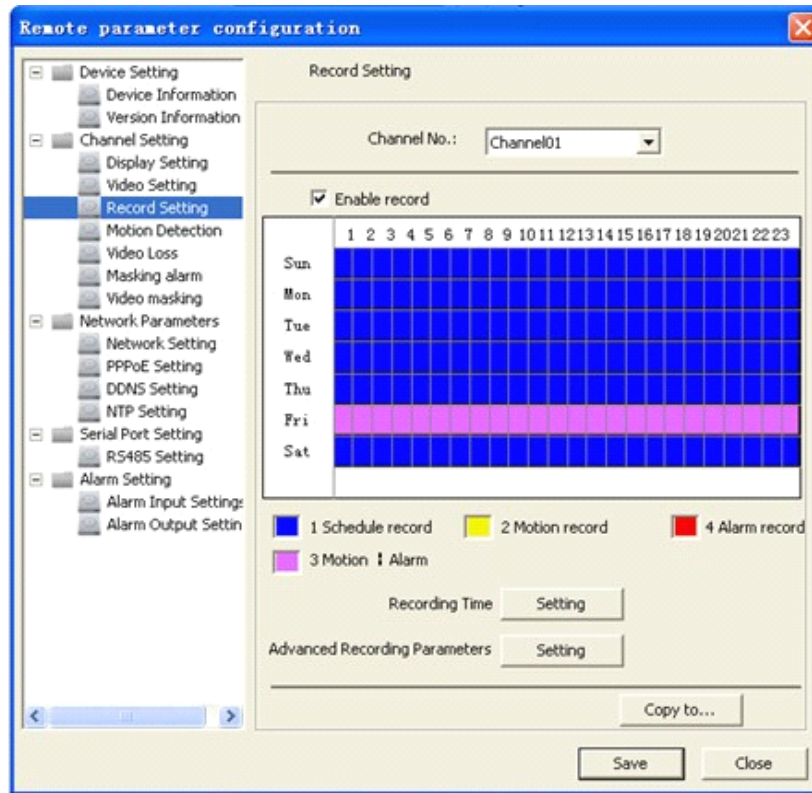
9.1.1 Encoding Parameters Configuration



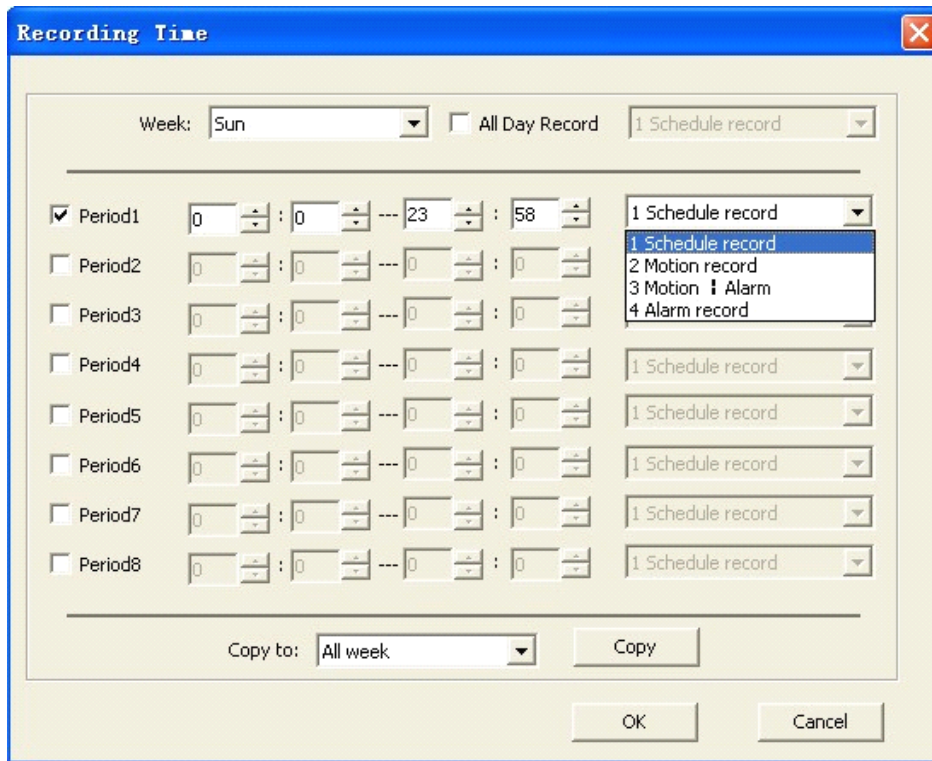
Parameters	Description
Type of compression	Main/Sub stream
Stream Type	Video & Audio or Video stream
Resolution	Recording Resolution
Bitrate Type	Variable & Constant
Max Bitrate	Maximum bit rate of the compressed stream
Frame Rate	Record frame rate, from 1 to full frame (25 (PAL) /30 (NTSC))
Video Quality	Highest, higher, high, average, lower, lowest

9.1.2 Schedule Recording

Select Channel Setting → Recording Setting. Enable recording by clicking the tick.

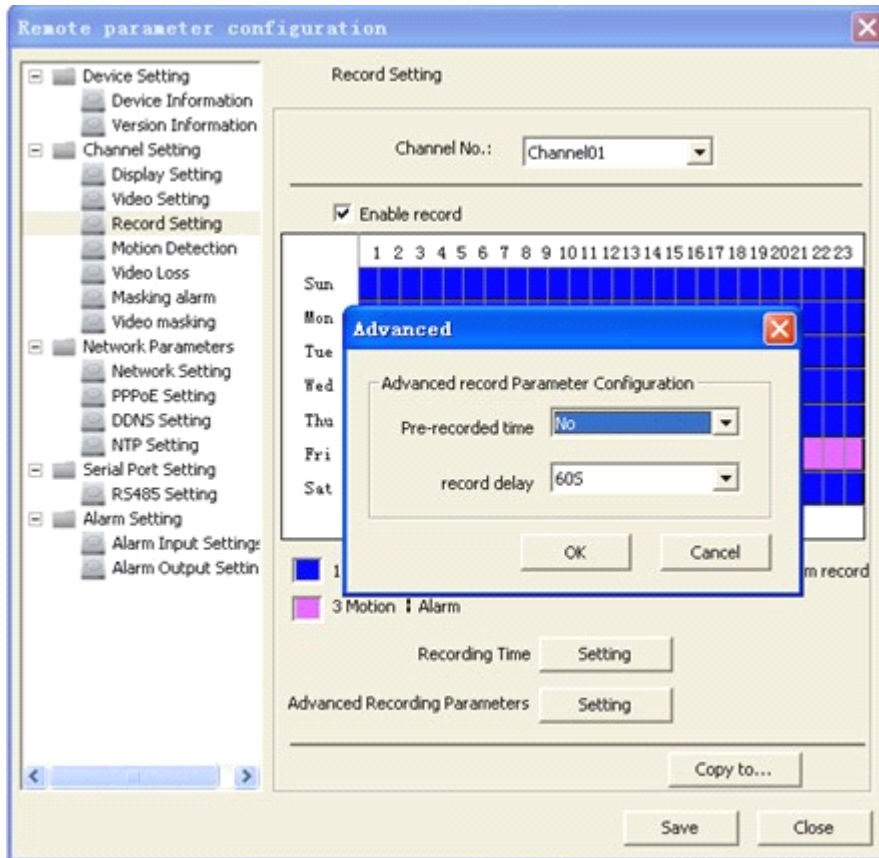


Click "Settings" of the "Record Time" to enter recording schedule configuration interface.



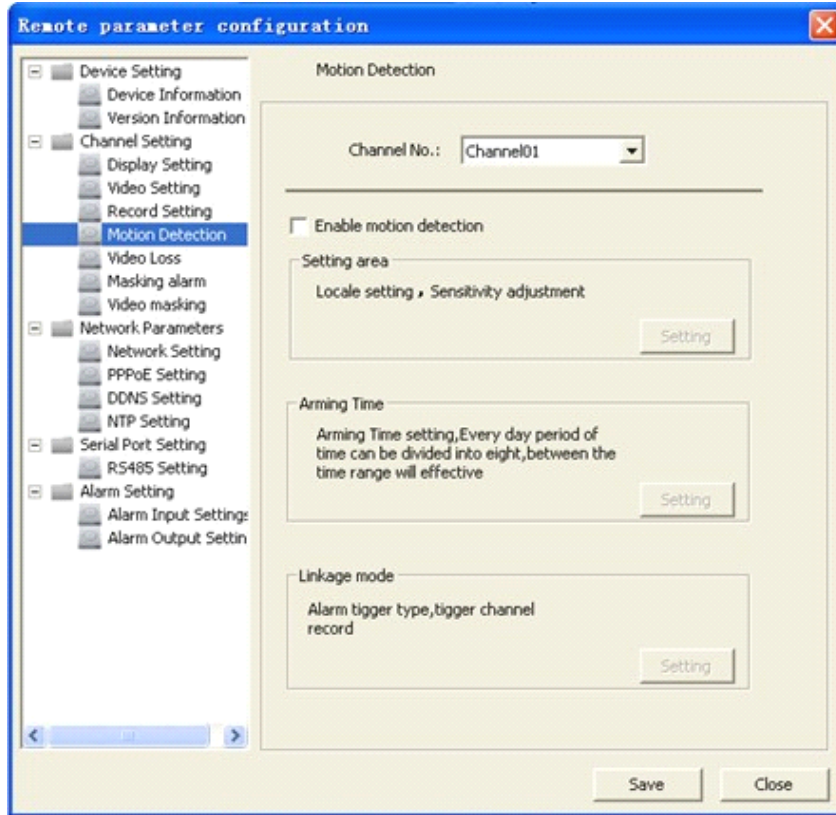
Select "Weekday" as some day of the week or the whole week for recording time.

Click "Settings" of the "Advanced settings" to enter advanced settings. User can set pre/post record time.

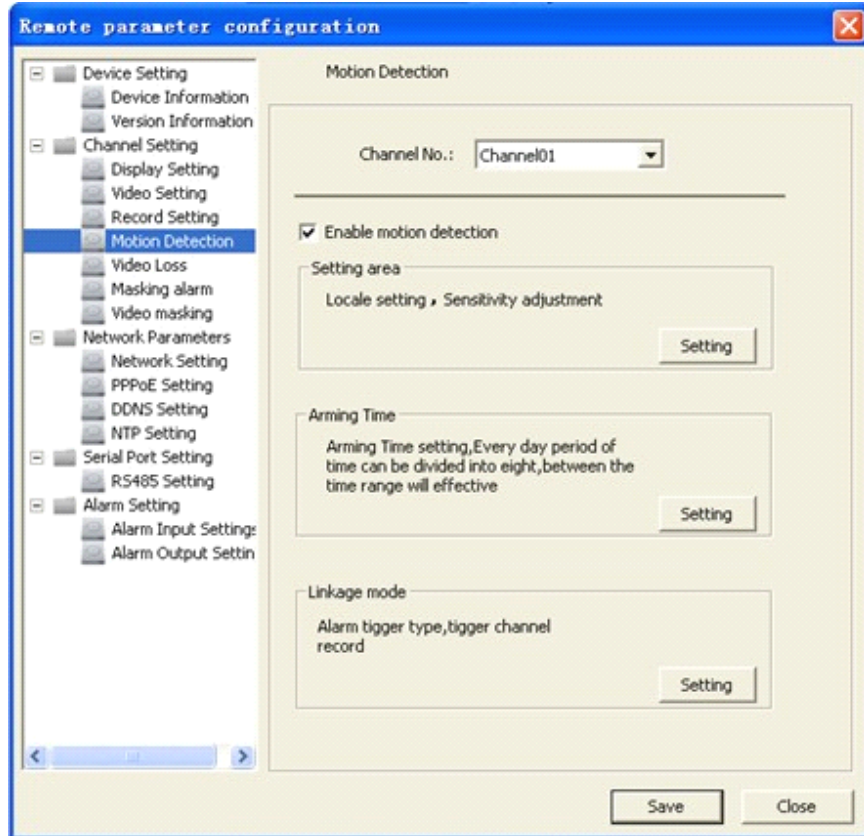


9.1.3 Motion Detection Recording

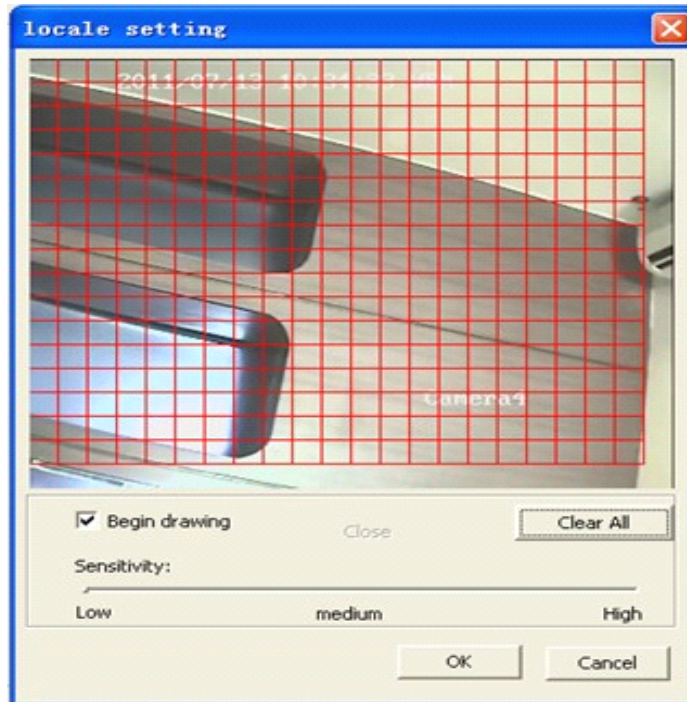
Step1: Select channel number for motion detection.



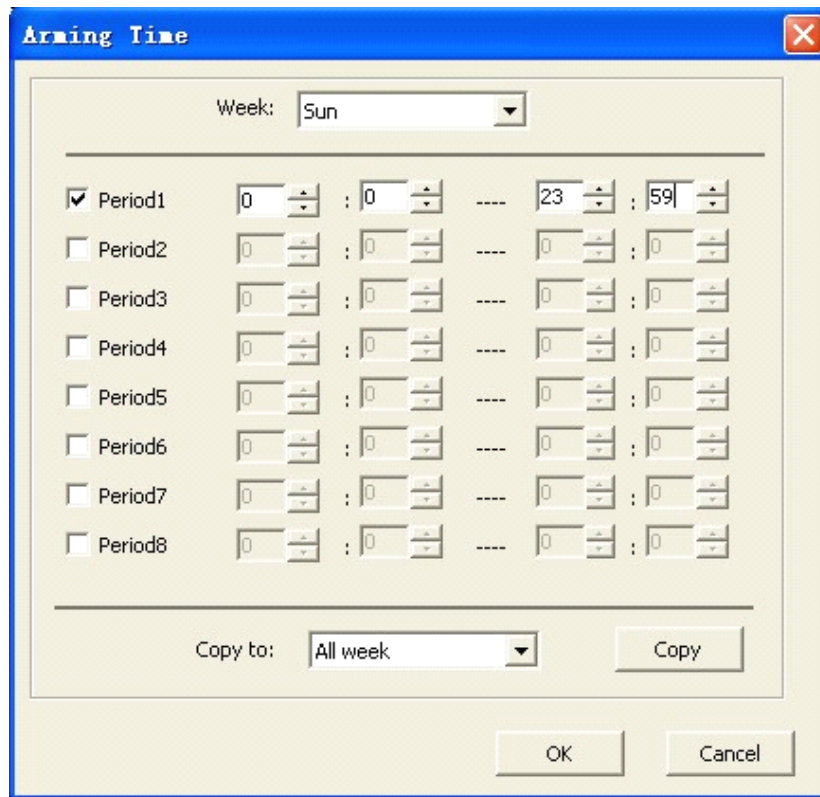
Step2: Enable motion detection to activate "Setting Area", "Arm Schedule" and "Linkage" settings.



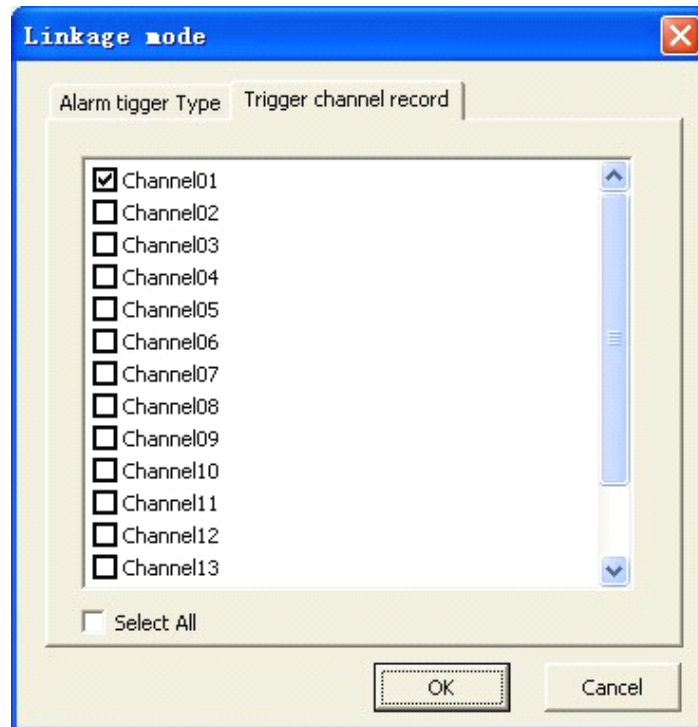
Step3: Set the motion detection area and sensitivity.
Enable "Start Draw", and select the detection area by using mouse.



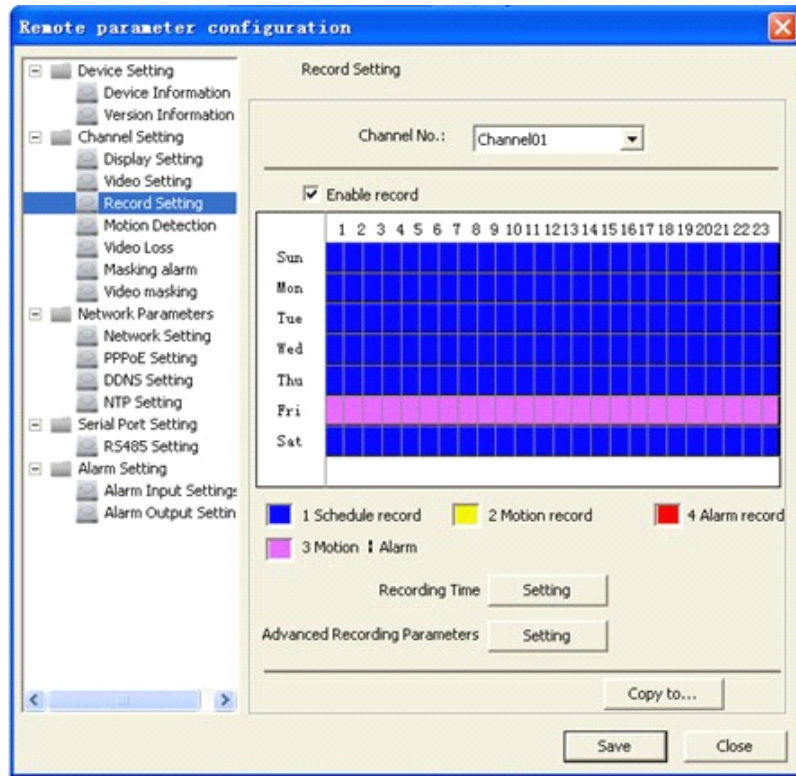
Step4: Set the detection time. "Arm Schedule" can be one day or the whole week, and 8 segments for one day.



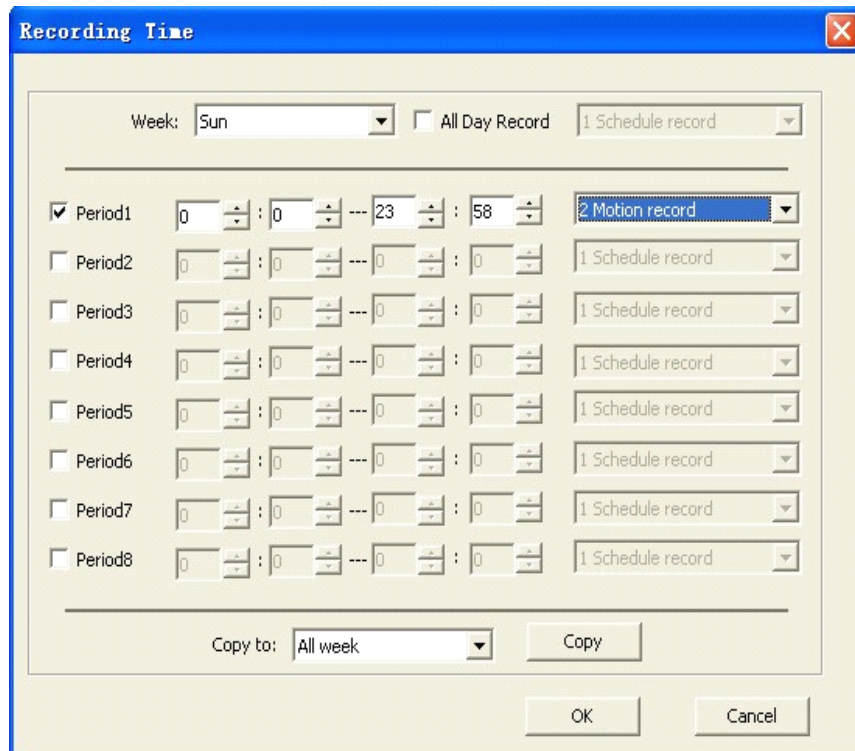
Step5: Set the "Trigger Recording" for linkage. Click "Setting" in the linkage area and select "Trigger Recording" tab.



Step6: Select  Channel Setting →  Recording Setting. Enable recording by clicking the tick.

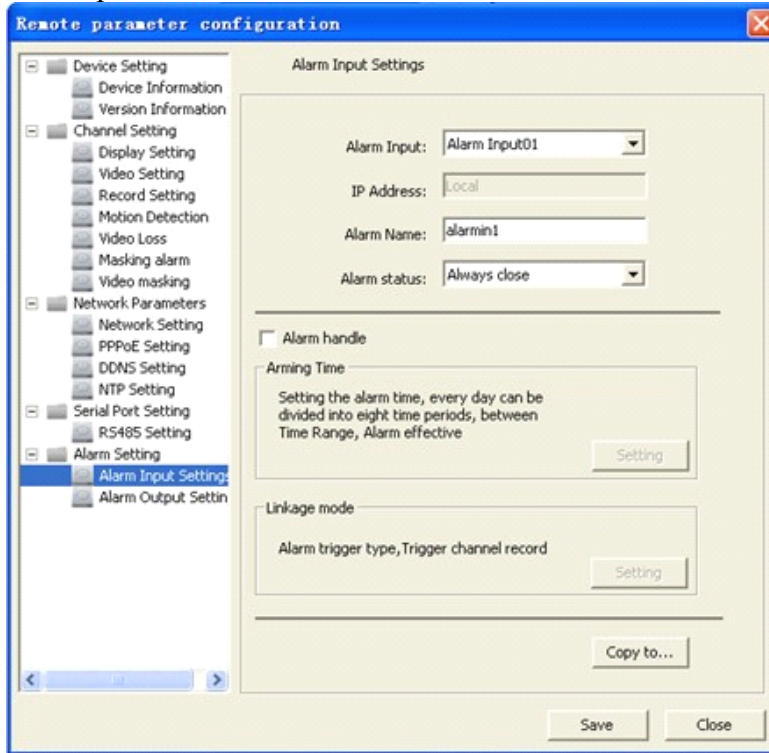


Step7: Set the detection recording time. Click "Settings" of "Record Time". Select "Weekday" as some day of the week or the whole week for recording time.

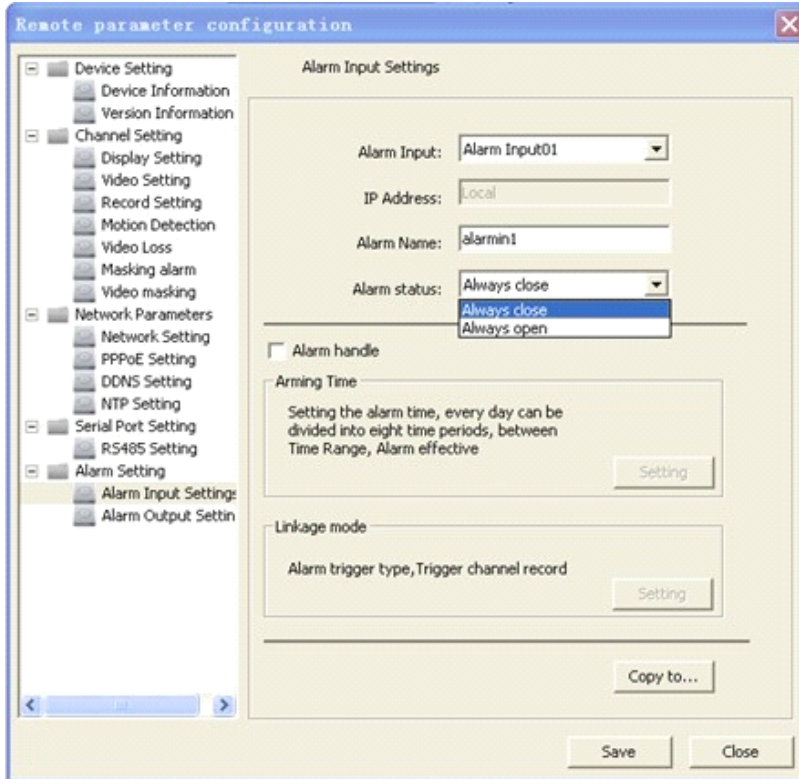


9.1.4 Alarm Recording

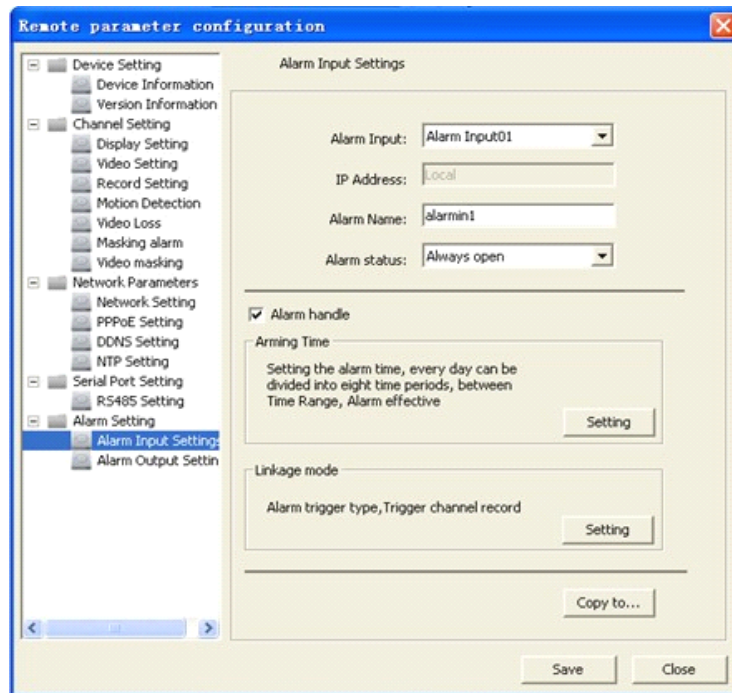
Step1: Select alarm input.



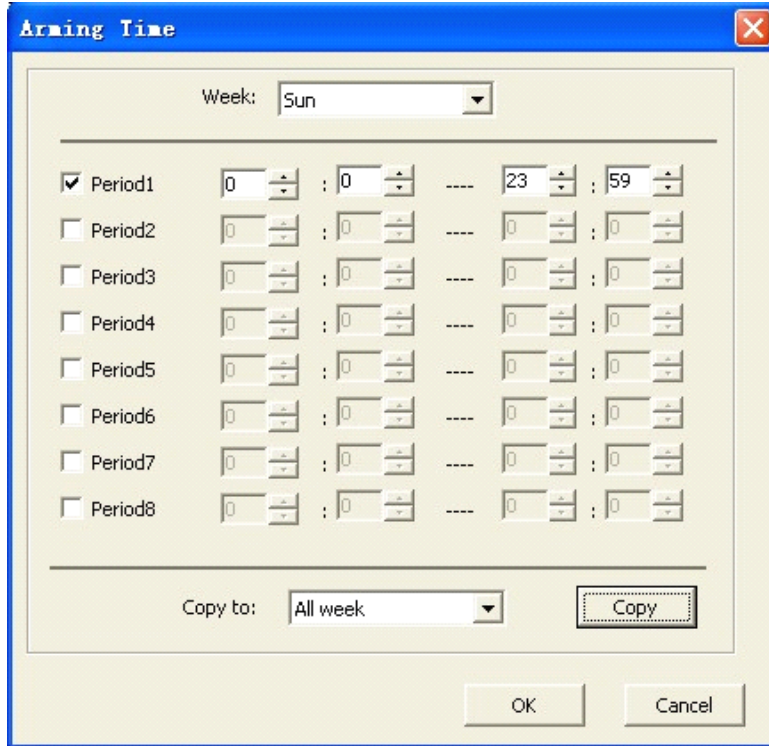
Step2: Select the type of alarm input, "NO" or "NC".



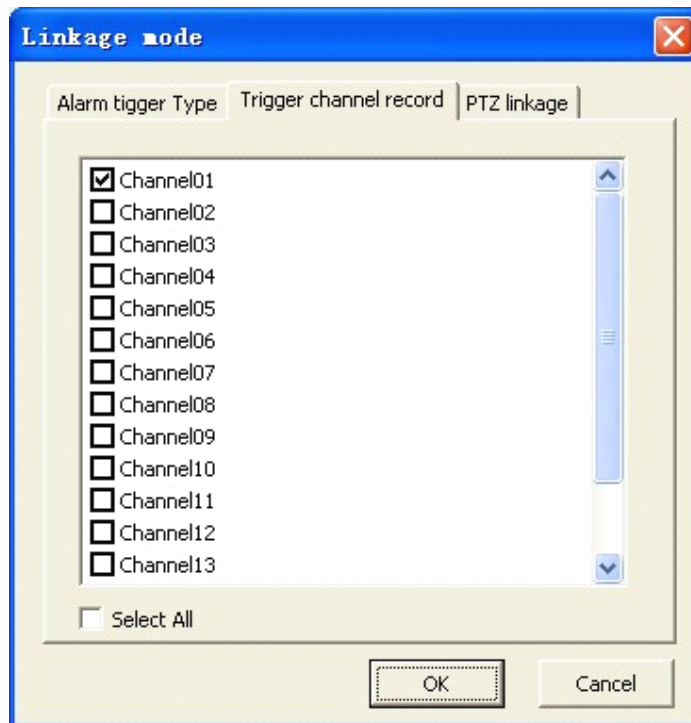
Step3: Enable "Alarm Handle" to activate "Arm Schedule" & "Linkage Method".



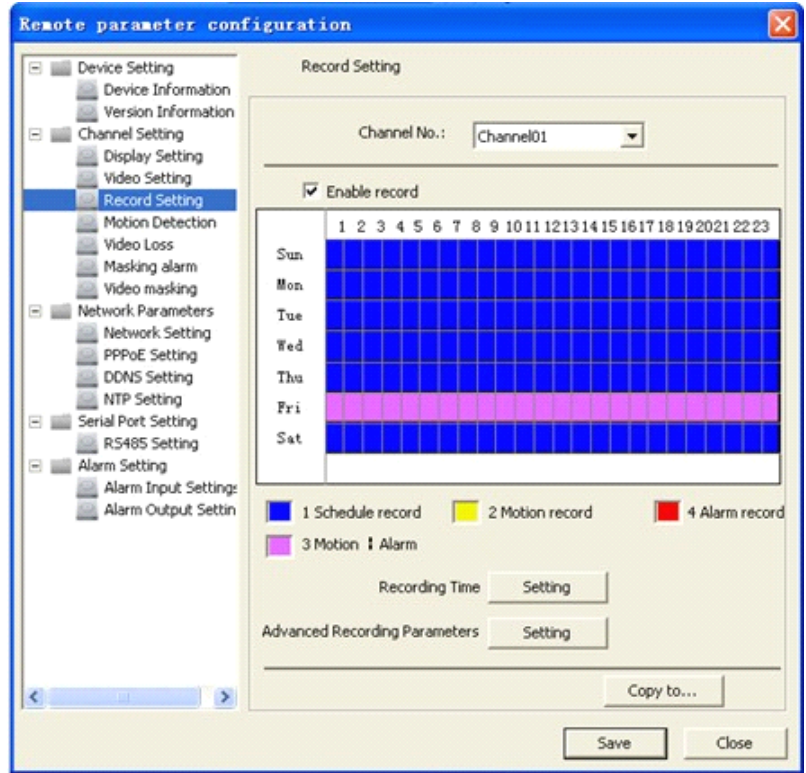
Step4: Set the arm schedule for alarm input. Click "Settings" in "Arm Schedule" menu. Select "Weekday" as some day of the week or the whole week for recording time. The "All Day Record" or 8 "Segments" can be selected as well.



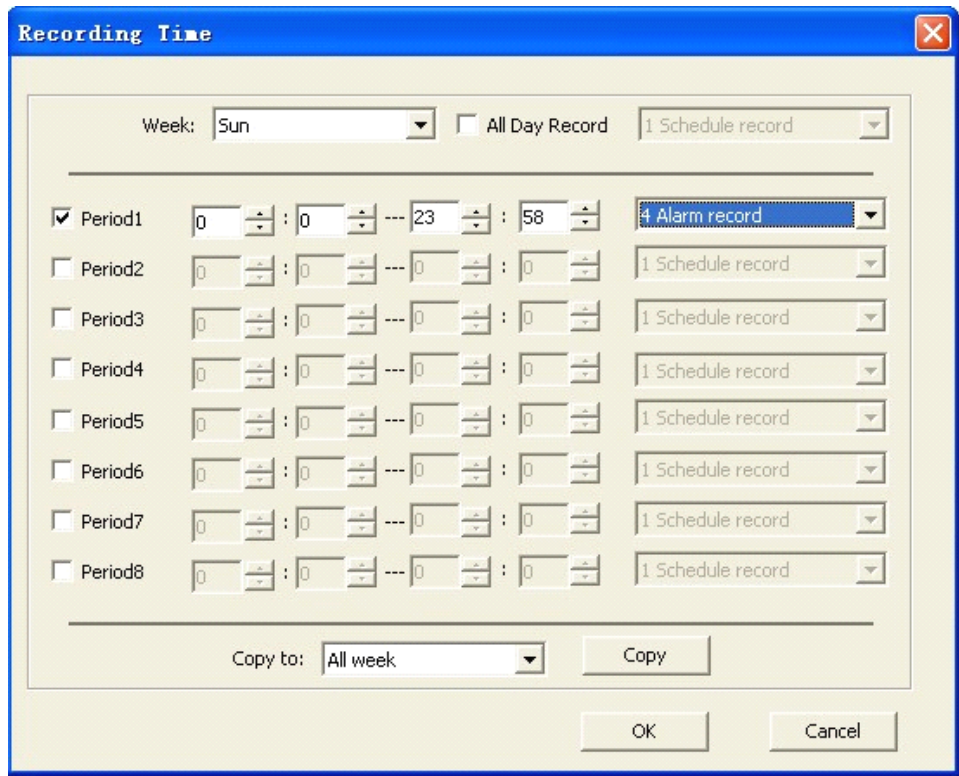
Step5: Set recording channel triggered by alarm. Click "Settings" in "Linkage" menu and select "Trigger Recording" tab. Enable the recording channels you want.



Step6: Enter schedule recording interface.



Step7: Set the recording time for alarm input. Click "Settings" of "Record Time". Select "Weekday" as some day of the week or the whole week for recording time.



9.1.5 Other Recording Modes

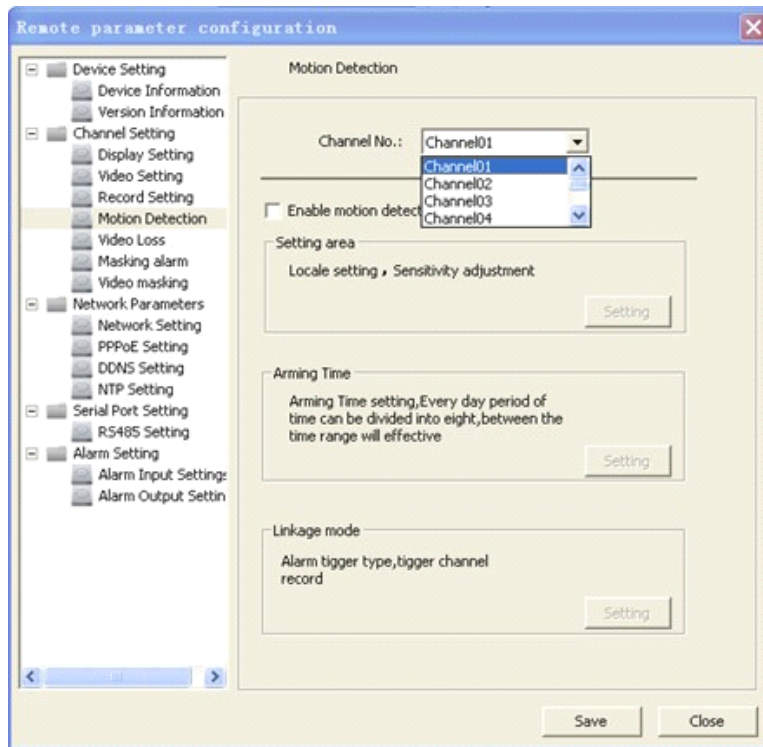
Other Recording Modes are including "Motion detection & Alarm", "Motion detection | Alarm". "&" means recording is triggered when two situations happened together; "|" means recording is triggered when one of the situations happened. The configurations are the same with "Motion detection recording" or "Alarm recording".

9.2 Alarm

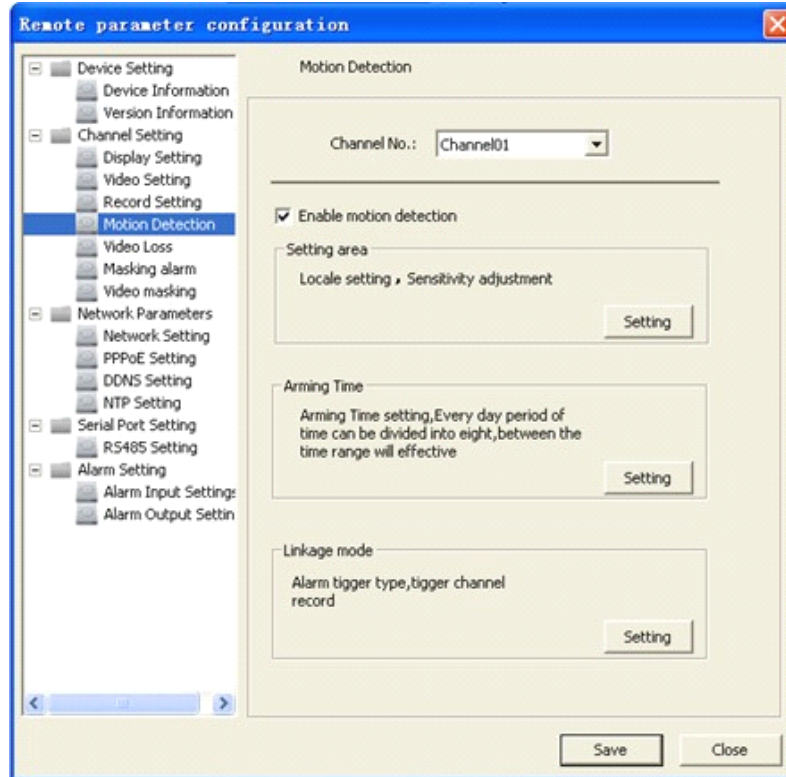
You can configure motion detection alarm, signal level alarm, video loss alarm and other alarm and linkage through client software.

9.2.1 Motion Detection Alarm

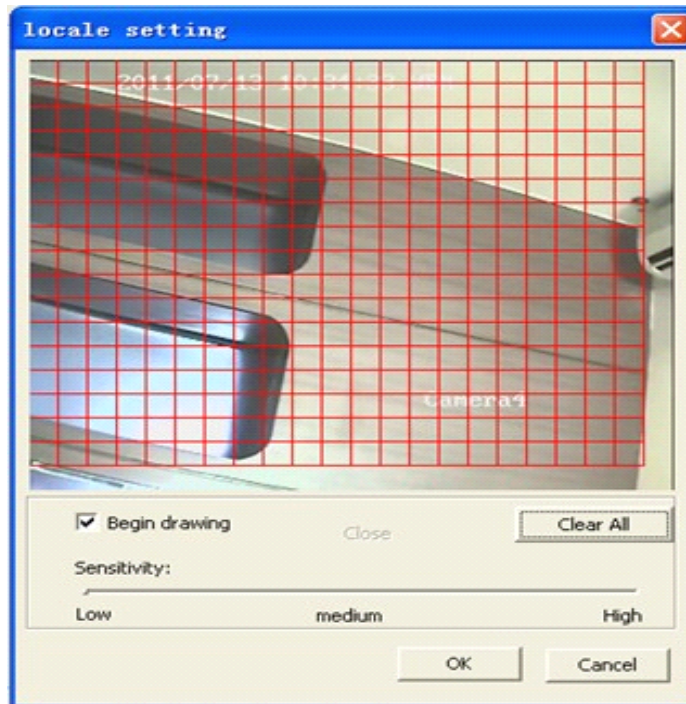
Step1: Select channel number for motion detection.



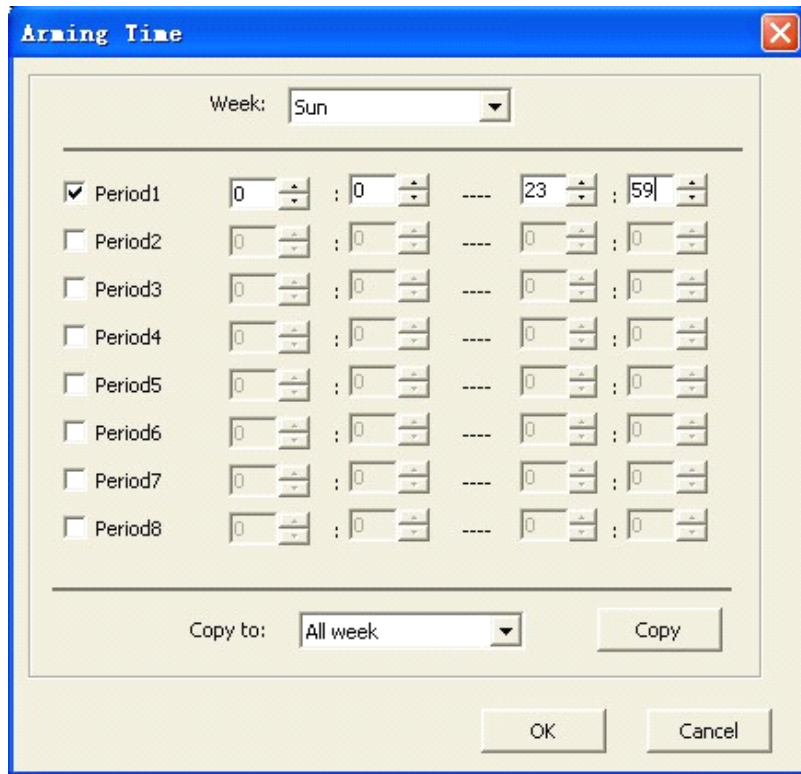
Step2: Enable motion detection to activate "Setting Area", "Arm Schedule" and "Linkage" settings.



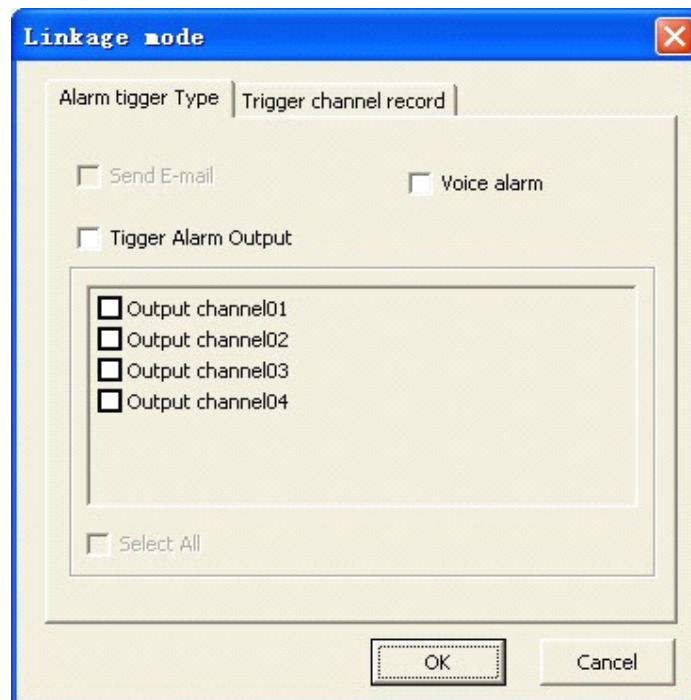
Step3: Set the motion detection area and sensitivity. Enable "Start Draw", and select the detection area by using mouse.



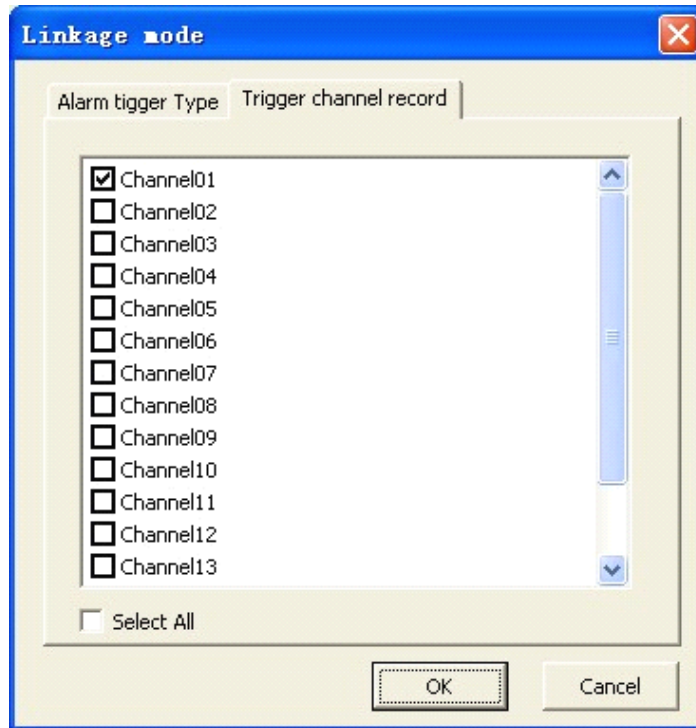
Step4: Set the detection time. "Arm Schedule" can be one day or the whole week, and 8 segments for one day.



Step5: Set the alarm linkage for motion detection and select alarm output channel.



Step6: Set the alarm linkage for recording and select channels for recording.



Linkage	Description
Audio Warning	Alarm triggers buzzer
Upload to Center	Upload the alarm signal to the center, such as client software
E-mail Linkage	When the alarm signal is detected, the client software will send the email to the designated mailbox.

9.2.2 Signal Level Alarm

Step1: Select alarm input.

Alarm Input Settings

Alarm Input: Alarm Input01

IP Address: Local

Alarm Name: alarmin1

Alarm status: Always open

Alarm handle

Arming Time

Setting the alarm time, every day can be divided into eight time periods, between Time Range, Alarm effective

Setting

Linkage mode

Alarm trigger type,Trigger channel record,PTZ

Setting

Copy to...

Save Close

Step2: Select the type of alarm input, "NO" or "NC".

Alarm Input Settings

Alarm Input: Alarm Input01

IP Address: Local

Alarm Name: alarmin1

Alarm status: Always open

Alarm handle

Arming Time

Setting the alarm time, every day can be divided into eight time periods, between Time Range, Alarm effective

Setting

Linkage mode

Alarm trigger type, Trigger channel record, PTZ

Setting

Copy to...

Save Close

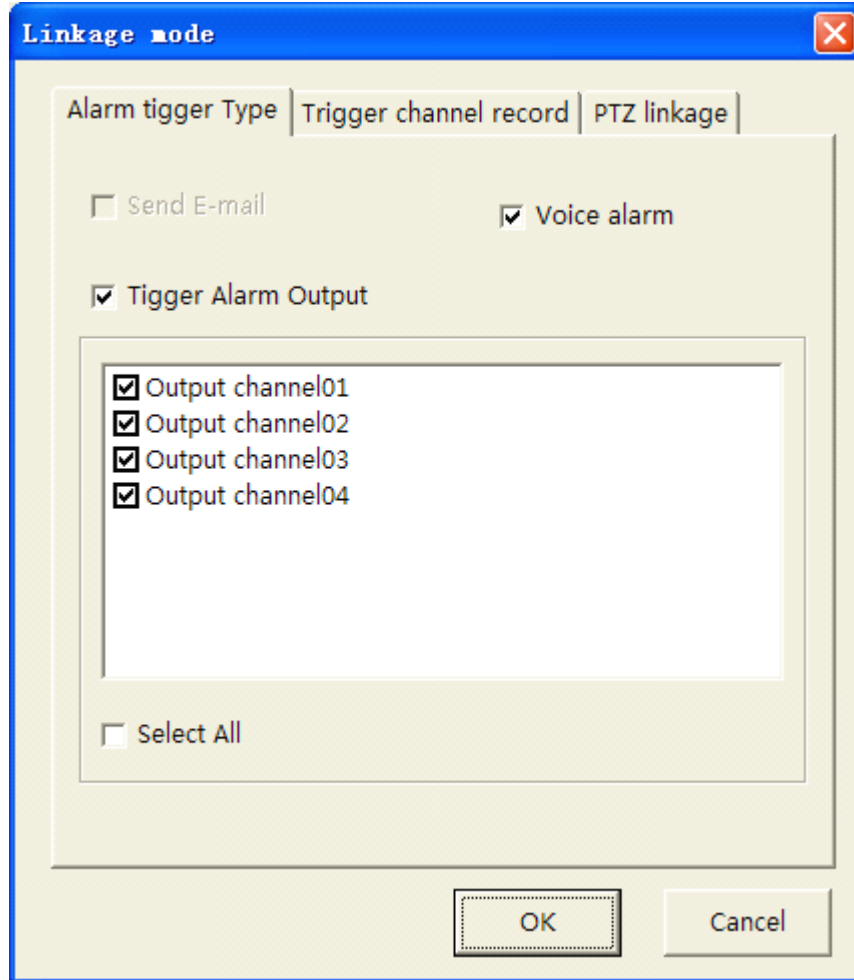
Step3: Enable "Alarm Handle" to activate "Arm Schedule" & "Linkage Method".

Step4: Set the arm schedule time for alarm input. Click "Settings" in "Arm Schedule" menu. Select "Weekday" as some day of the week or the whole week for recording time. The "All Day Record" or 8 "Segments" can be selected as well.

The image shows a software dialog box titled "Arming Time". At the top, there is a "Week:" dropdown menu set to "Sun". Below this, there are eight rows representing different time periods. Each row has a checkbox, a label (Period1 through Period8), and four time input fields. The input fields are arranged in pairs, separated by a colon and a dash. The values for the checked periods are: Period1 (0:00 to 2:59), Period3 (4:00 to 7:00), Period4 (6:00 to 8:59), and Period6 (21:00 to 23:00). At the bottom of the dialog, there is a "Copy to:" dropdown menu set to "All week" and a "Copy" button. Below the main content area are "OK" and "Cancel" buttons.

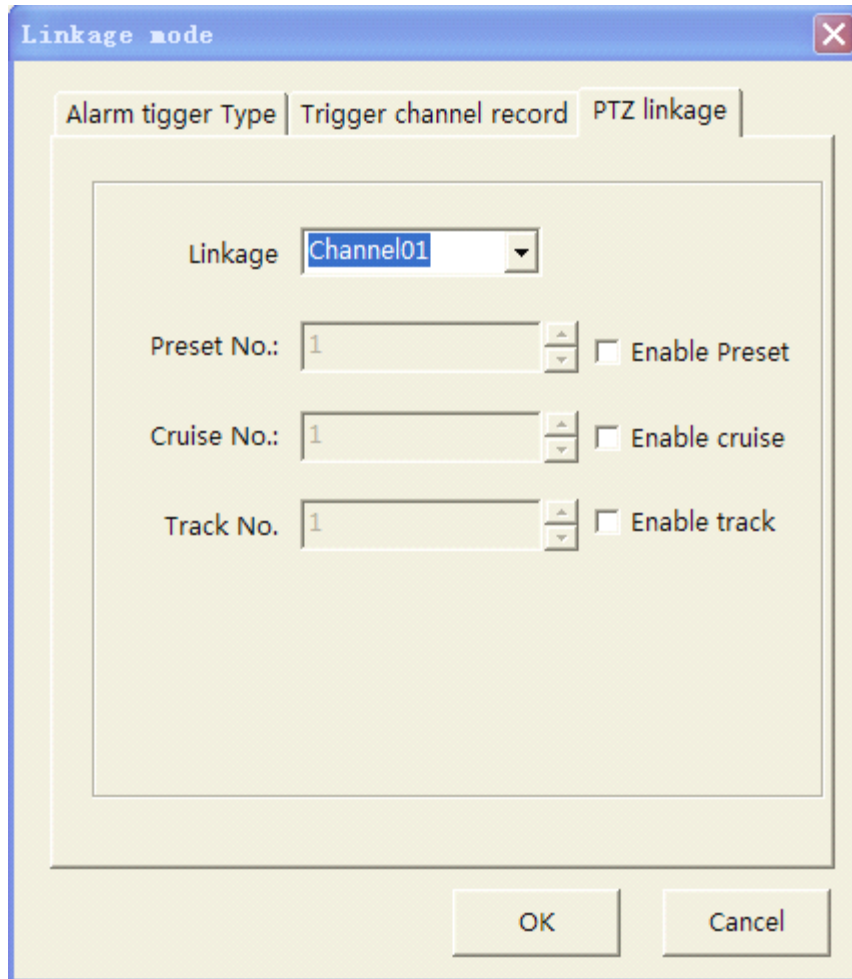
Period	Start	End
<input checked="" type="checkbox"/> Period1	00:00	02:59
<input type="checkbox"/> Period2	00:00	00:00
<input checked="" type="checkbox"/> Period3	04:00	07:00
<input checked="" type="checkbox"/> Period4	06:00	08:59
<input type="checkbox"/> Period5	00:00	00:00
<input checked="" type="checkbox"/> Period6	21:00	23:00
<input type="checkbox"/> Period7	00:00	00:00
<input type="checkbox"/> Period8	00:00	00:00

Step5: Set the alarm linkage for signal level and select alarm output channel.



Step6: Set Trigger Recording for signal level alarm.

Step7: Set PTZ linkage for signal level alarm.

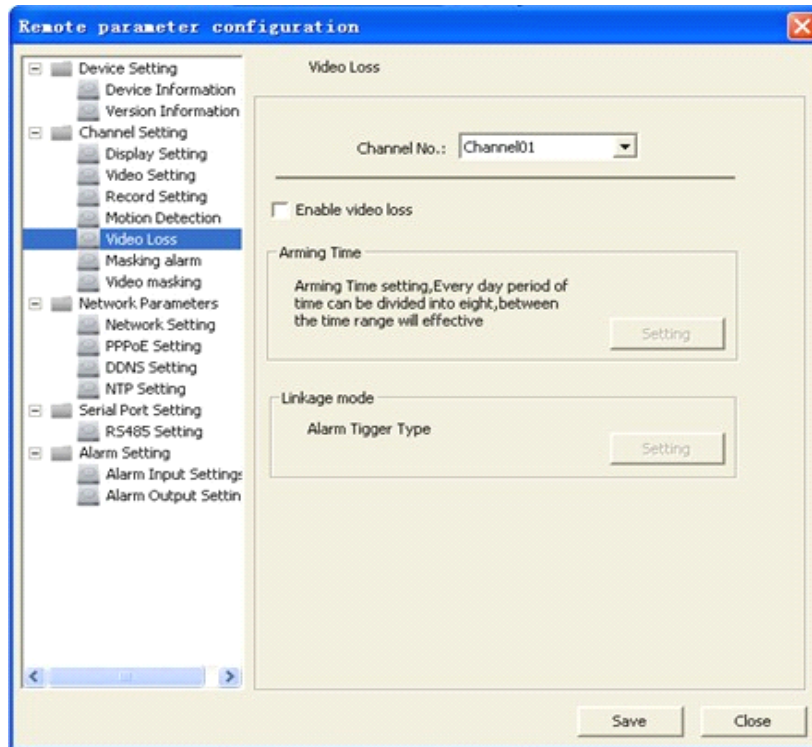


9.2.3 Video Loss

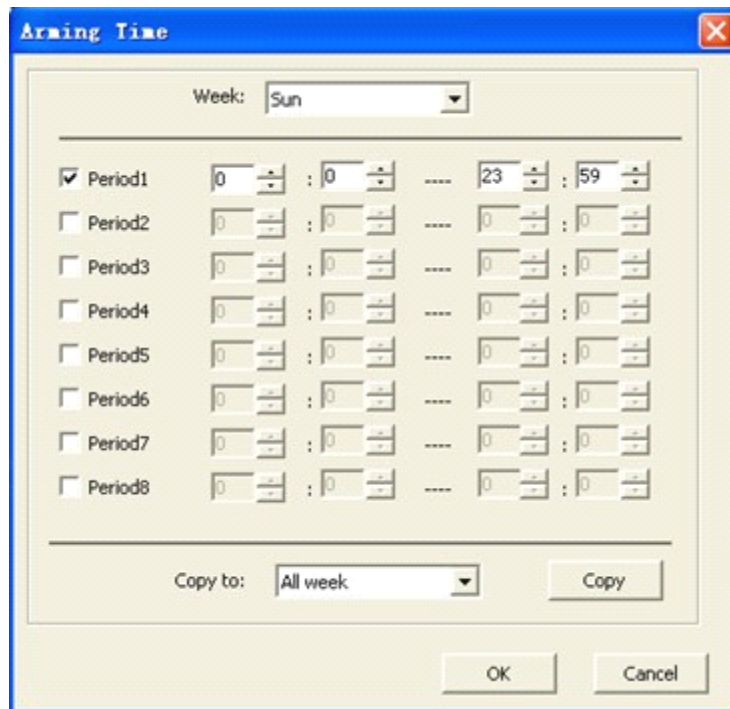
If the video input signal loss, user can set relevant linkage operation.

Step1: Select the channel number for video loss.

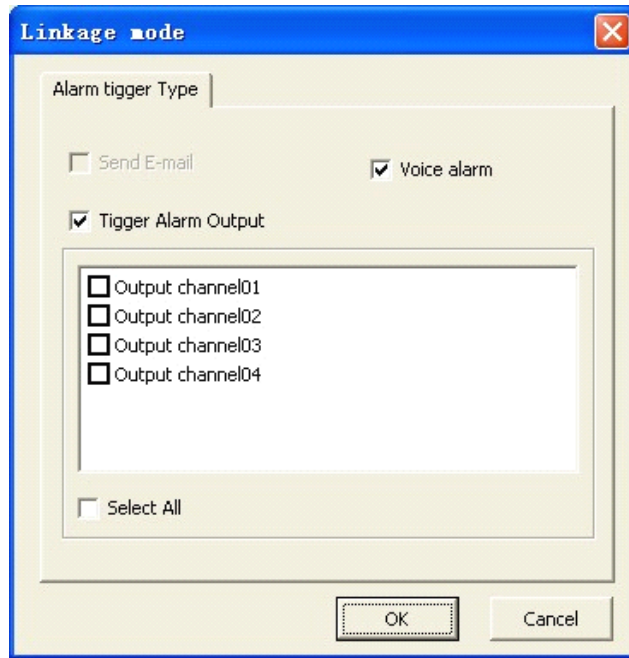
Step2: Enable "Video Loss" to activate settings of "Arm Schedule" and "Linkage"



Step3: Set the arm schedule for video loss. Click "Settings" in "Arm Schedule" menu. Select "Weekday" as some day of the week or the whole week for the arm schedule. The "All Day Record" or 8 "Segments" can be selected as well.

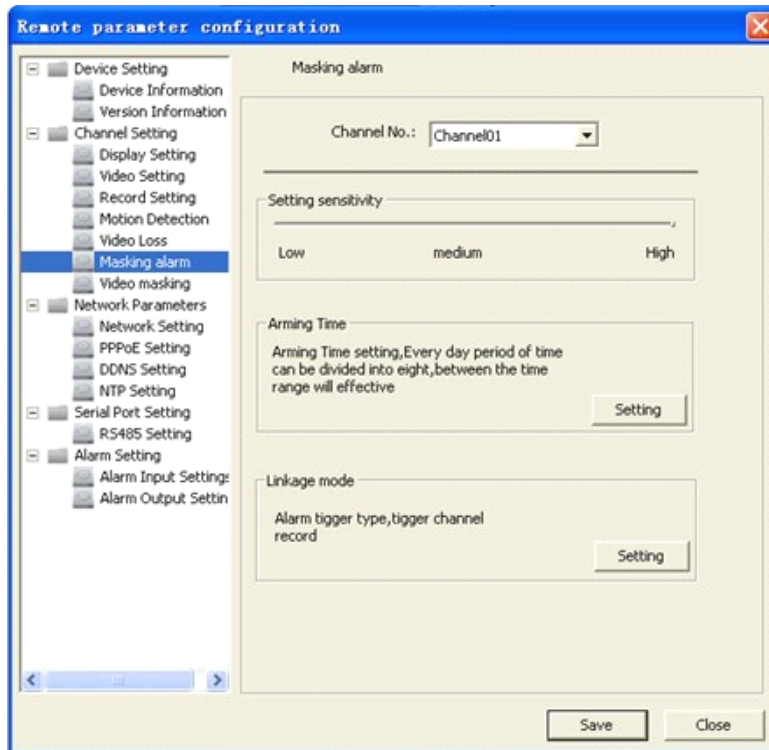


Step4: Set linkage for video loss. Click "Settings" in the "Linkage" menu.



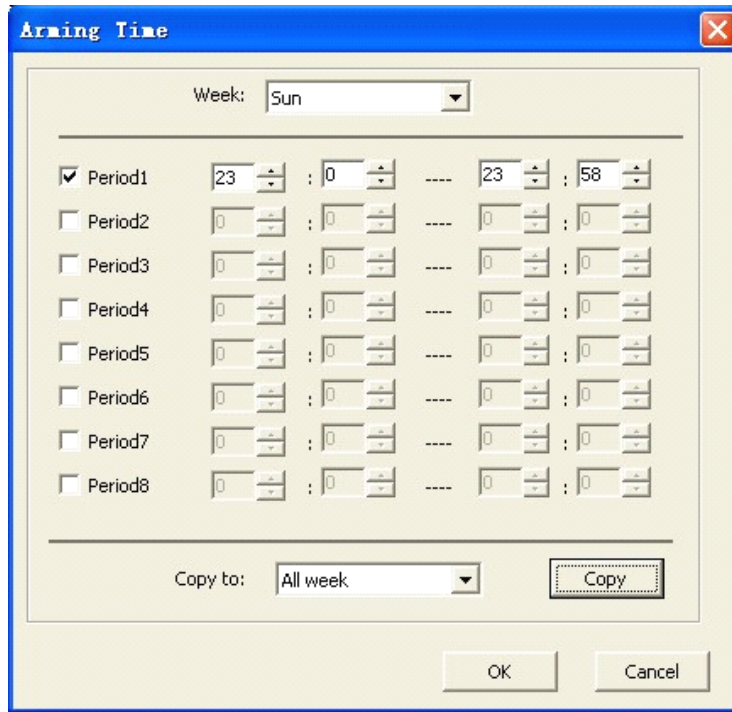
9.2.4 Video Tampering

Step1: Select the channel number for video tampering.

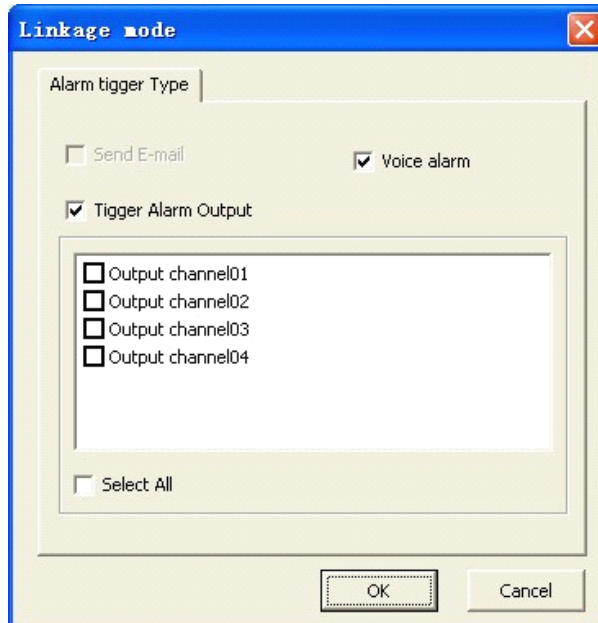


Step2: Enable "Video Tampering Alarm" to activate settings of "Setting Areas", "Arm

schedule" and "Linkage" .

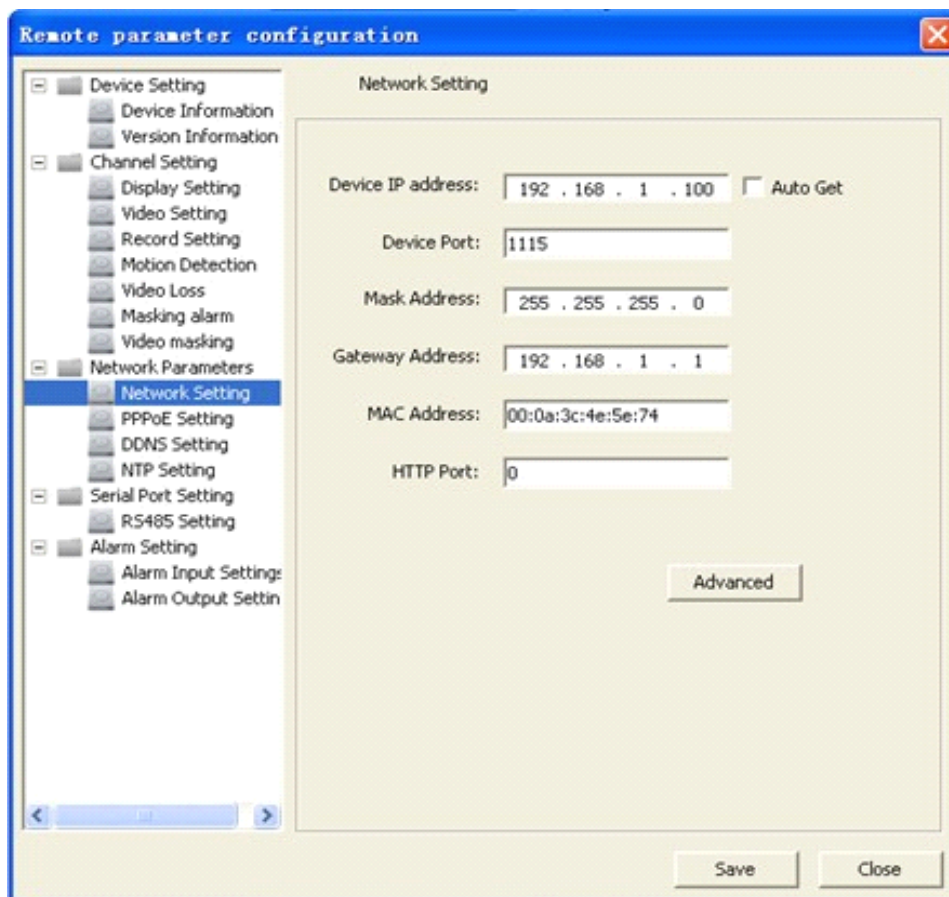


Step4: Set the arm schedule for video tampering.

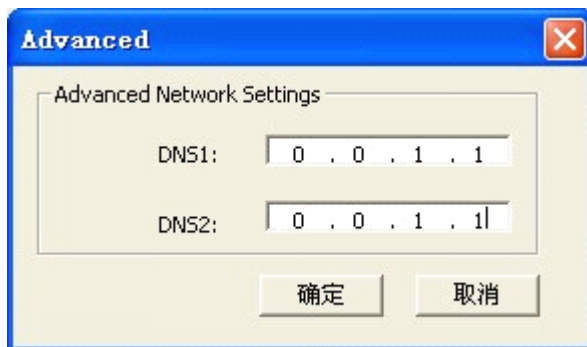


9.3 Network Configuration

9.3.1 Basic Configuration



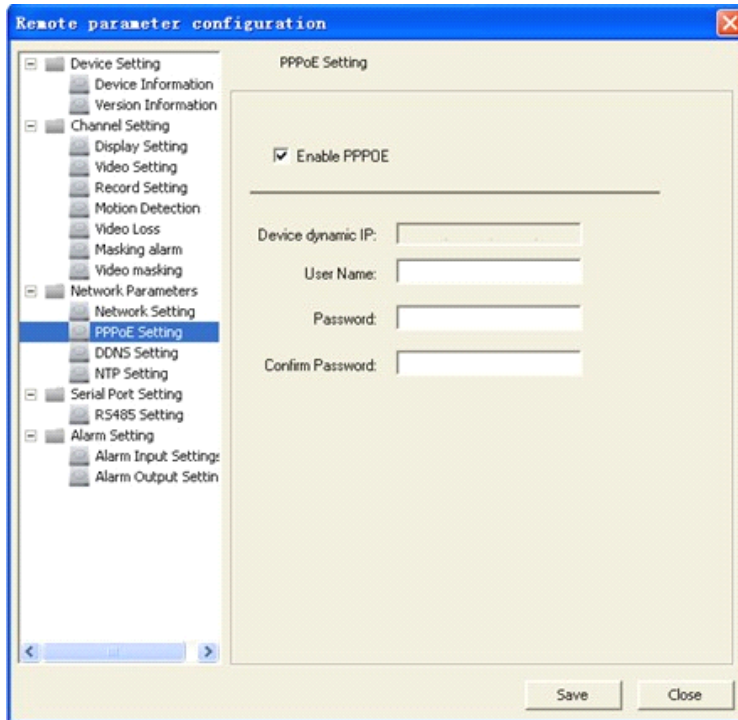
Select "Advance" to enter advanced configuration. You can configure preferred DNS server1 and spare DNS server2.



Parameters	Description
DNS1 DNS2	Preferred and spare DNS server

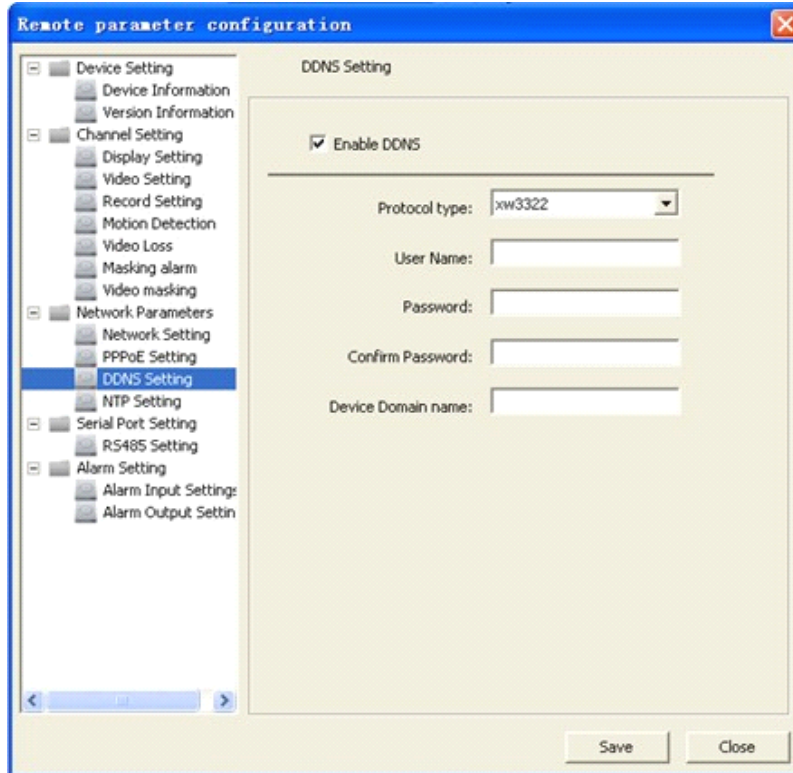
9.3.2 PPPoE

Enable PPPoE by ticking , input the user name and password, then save the changes and reboot the device to make the parameters become effective. If succeed to dial, the current IP address will be displayed in the blank "DDNS IP".



9.3.3 DDNS

Adopting DDNS function can solve the problems caused by dynamic IP. Enable DDNS. If the "IPServer IP" is selected as protocol, then input the address where the IP server is running.



If the "Dyndns" is selected as protocol:

Server Name: Input the IP address of the server, such as members.dyndns.org;

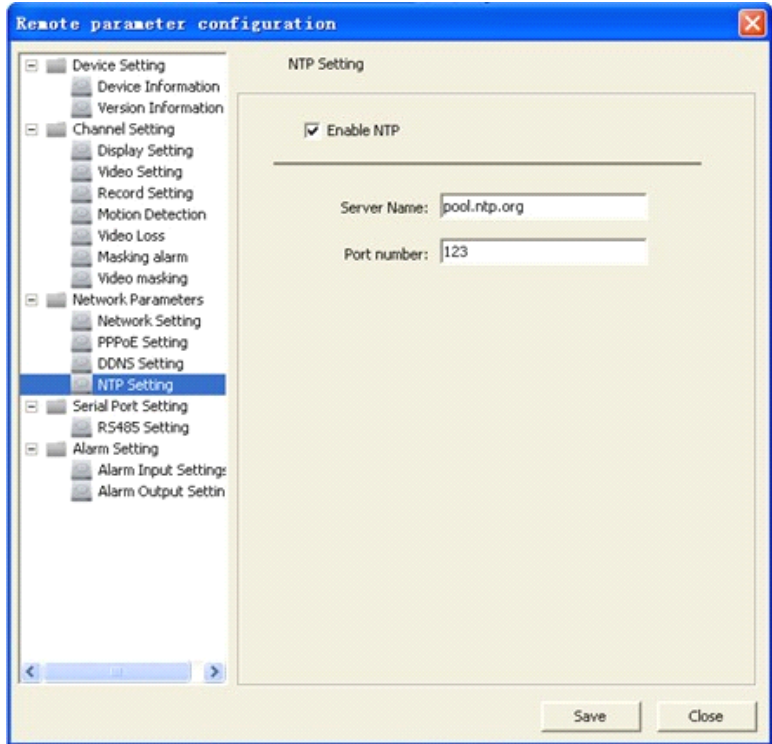
Domain: the domain name that user applied for the device, such as test.dynlia.com;

User name, password and verify: the account information that user registered on the Dyndns website.

9.3.4 NTP

Adopting NTP function can enable CMS software to synchronize the time and data of the device regularly.

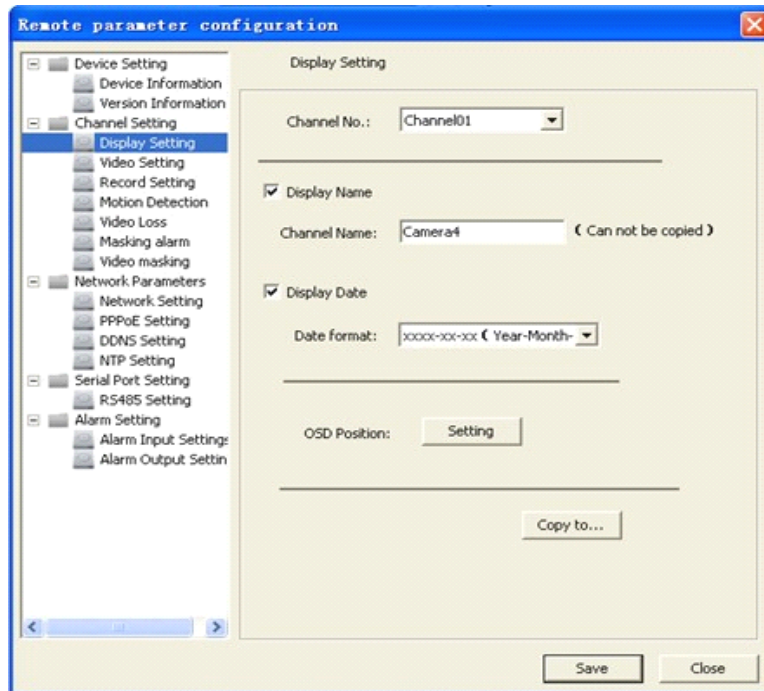
If the device connected to the public network, the IP address of NTP server provided by carrier can be input in the blank "Server Address".



9.4 Channel Configuration

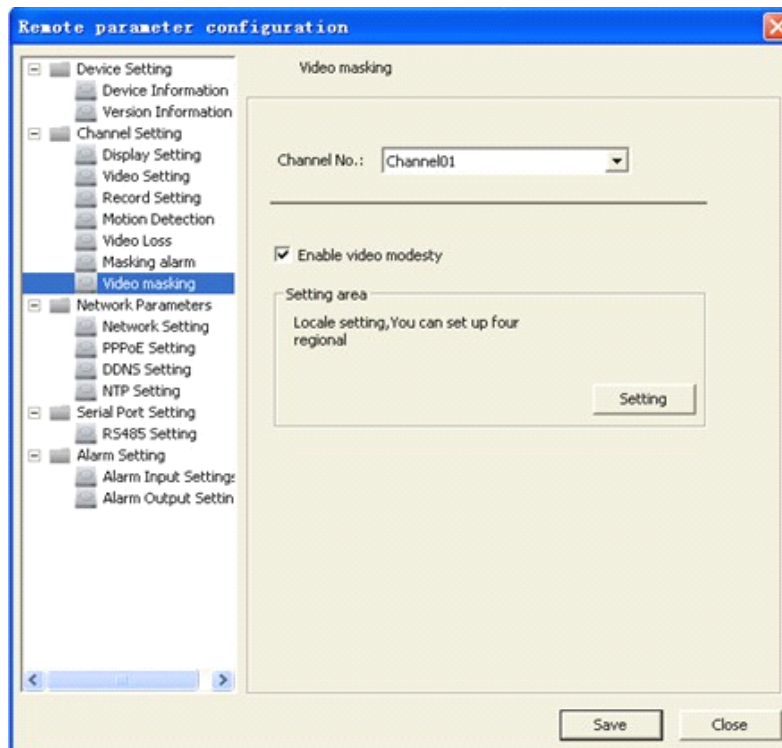
9.4.1 Channel Display Settings

You can configure channel name, OSD and related parameters here.

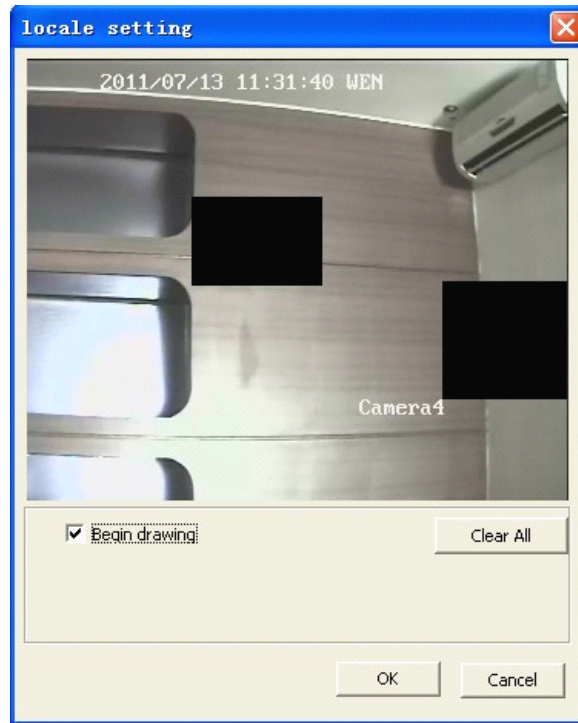


9.4.2 Video Mask

Step1: Select channel number, and enable video mask.

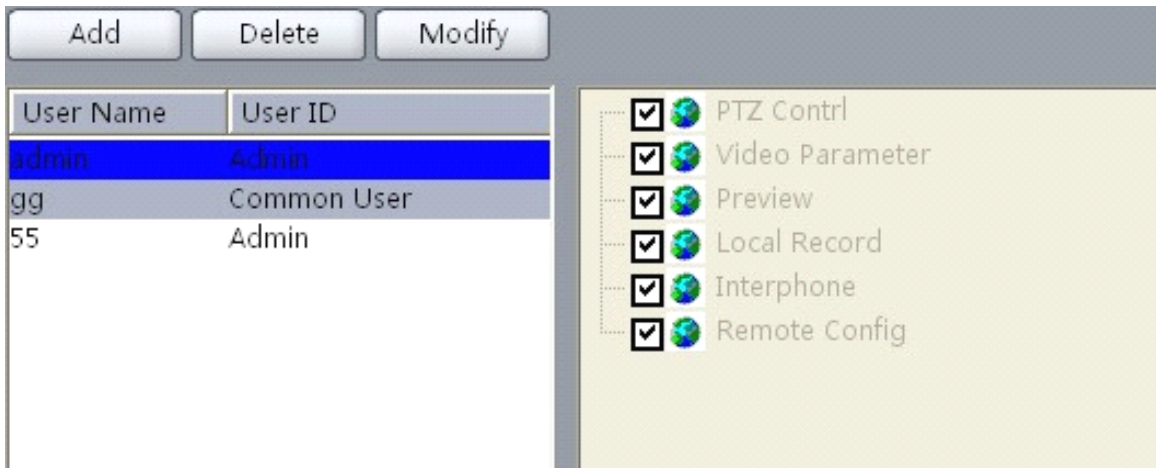


Step2: Set the mask area. Click "Settings" to enter area set menu. Enable "Start Draw", select the mask area by clicking and dragging the mouse.



10. User Management

Click  →  to enter the User Management interface:



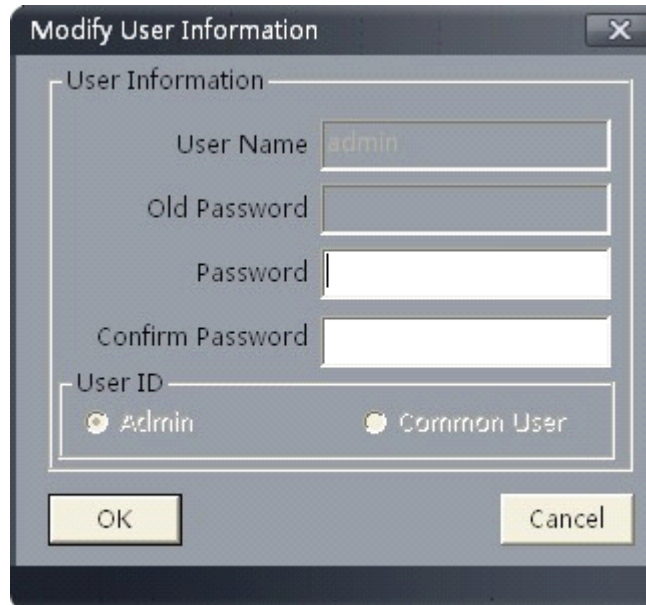
10.1 Add & Delete User

Right click the user list on the left, and select "Add User".

Input the user name, password and select the level for user, then click "OK" to finish. There are two options for user level: Administrator and Common user. Administrator has all the rights by default; as for Guest, you need to set the rights for it.



Right click it and select "Modify User" to change the password and user level.



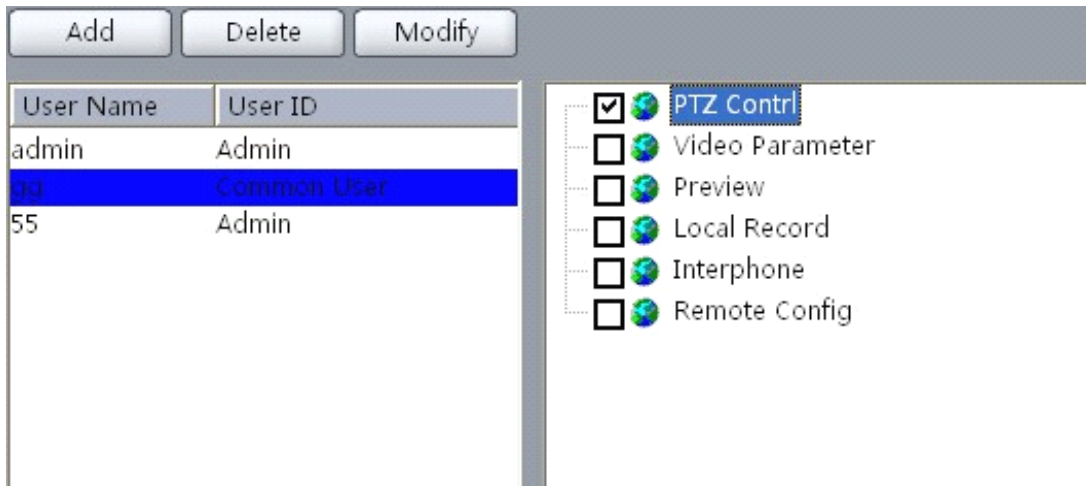
User Privileges Descriptions:

User Type	Privilege	Descriptions
-----------	-----------	--------------

Administrator	Operation Privilege	With all privileges by default, cannot be changed.
	Add user	No privileges
	Modify user	No privileges
Common user	Operation Privilege	No local configuration privileges, needs to set the privileges first.
	Add user	No privileges
	Modify user	No privileges

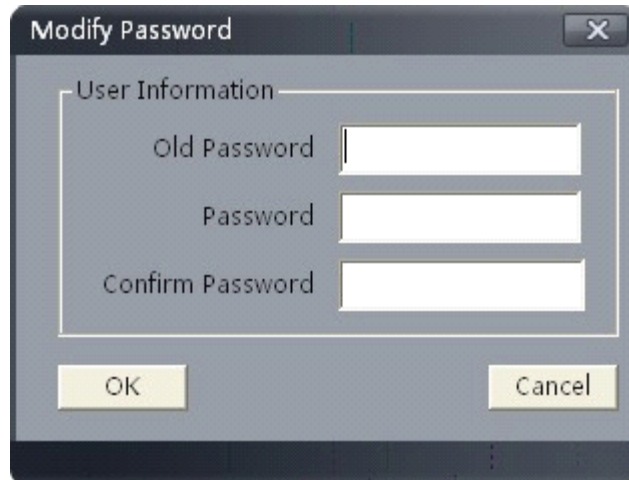
10.2 User Rights Distribution

Select a common user, and click the rights tree on the right to distribute the rights for user.



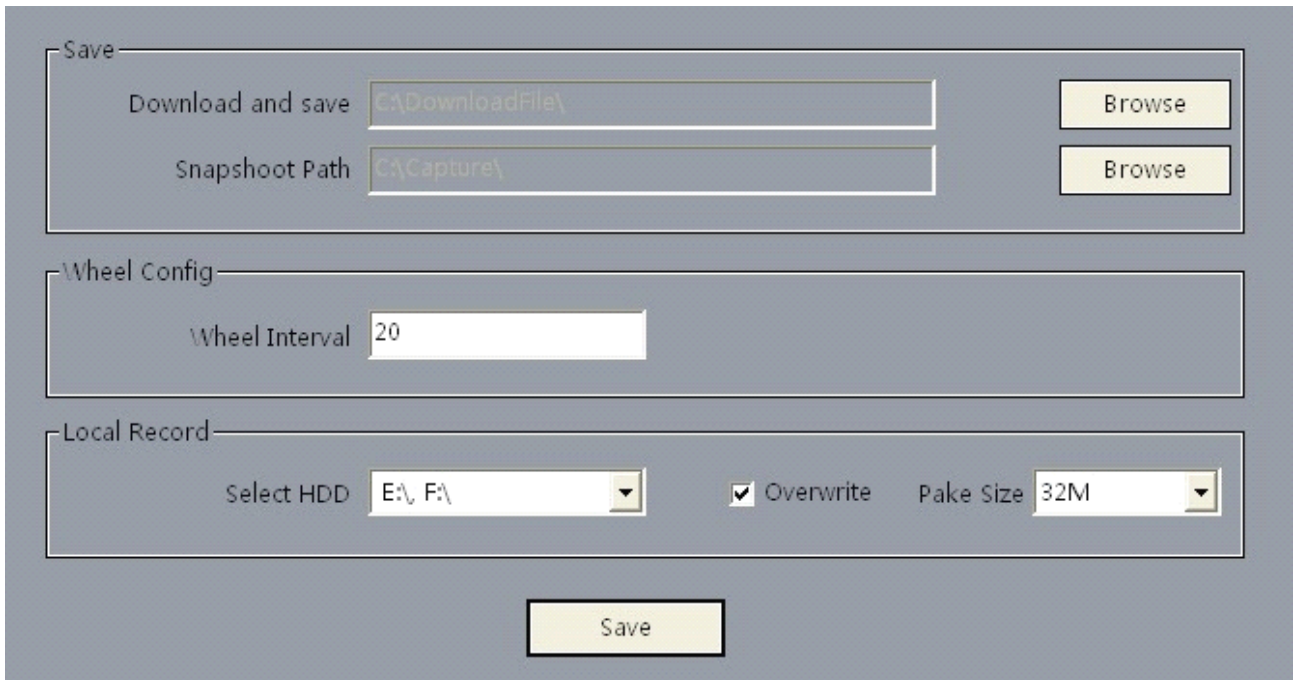
10.3 Modify password

Click  →  to change password of current user.



11. Software Configuration

Click **Configuration** → **Local settings** to enter the following interface:




Configuration	Descriptions
Remote Download Path	Set the path for remote downloading recorded files

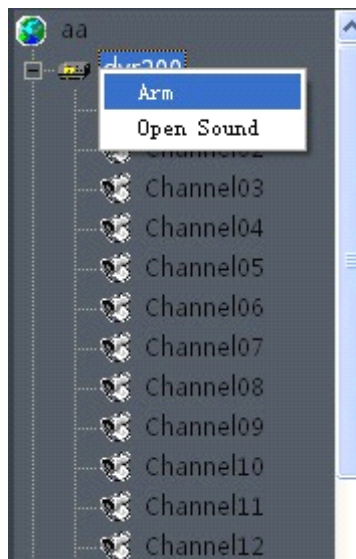
Capture Saving Path	The saving path of captures from preview or playback
Dwell Time	Set the time of cycle play

12. Alarm Linkage

12.1 Alarm Arming & Disarming

You can choose "Arm software" and "Cancel Guard" to decide whether to handle alarm signal or not.

Right click the device name in the preview mode, and select "Arm software" to enable to monitor the alarm of the device; and the icon of the device will become as .



If the device is on guard, right click the device name, you can select the "Cancel Guard" to cancel monitoring the alarm of the device.

