

Instruction for IE network monitor

This system features a built-in browser-based software that allows you to access your system remotely over your local area network (LAN) or over the Internet (WAN) using Internet Explorer. After Installation of the software through the IE browser, you can operate the DVR remotely and conveniently. DVR supports the visit in LAN and WAN, also supports IP and domain name visiting.

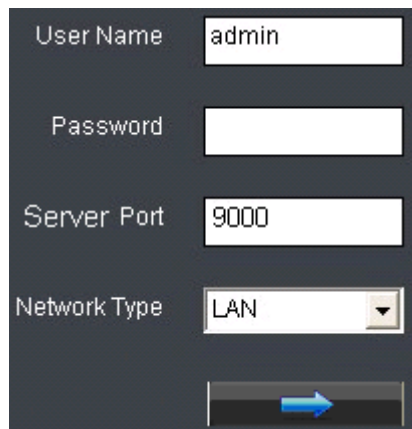
Note: To ensure PC's stable visiting of DVR, recommend Windows XP, Windows Vista, Windows 7 operation system, recommend browser as IE 6.0, IE 7.0, IE 8.0.

1. Setup ActiveX Plug-In

To access the DVR by IE, you must setup an ActiveX control firstly. You can download this ActiveX plug-in from DVR. To download ActiveX control for your DVR, please start Internet Explorer, input your DVR IP address. IE will inform you to setup IE ActiveX plug-in. After setup, you will see login web page.

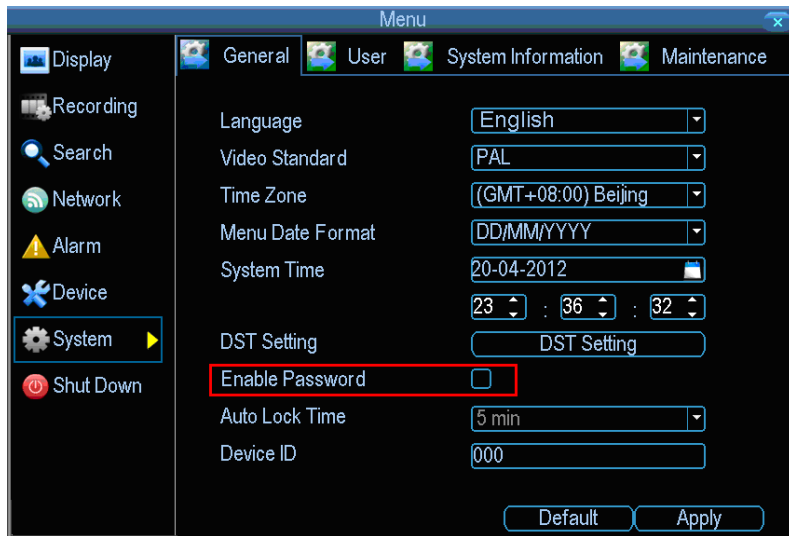
2. Login your DVR

After installation of ActiveX Plug-in, you can now access your DVR by IE. First of all, you should login your DVR. To login your DVR, you have to input: **User name**, **Password**, **Server port**. Also, you need to select whether you access your DVR from Local Area Network (LAN) or Internet (WAN).

A screenshot of a login form with a dark background. It contains four input fields: 'User Name' with 'admin' entered, 'Password' (empty), 'Server Port' with '9000' entered, and 'Network Type' with a dropdown menu showing 'LAN'. A blue arrow button is at the bottom.

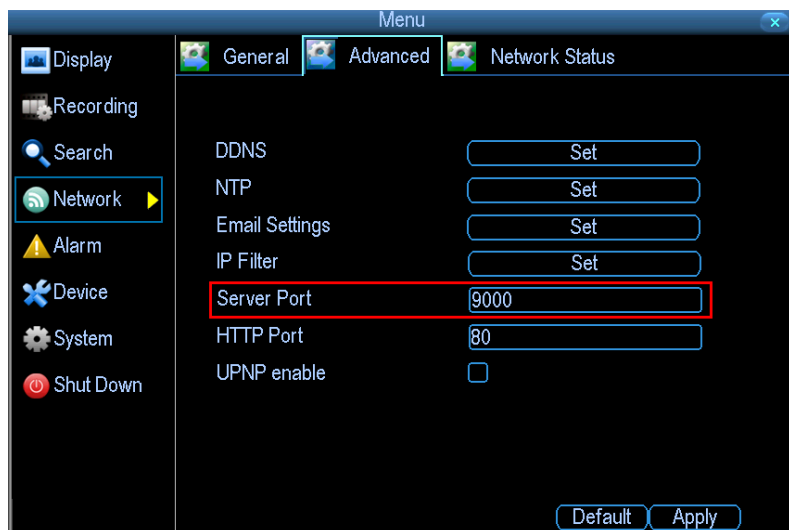
User Name and Password: By default, the password is not enabled. That means you don't need

to input user name / password when login the DVR. If you enable the password, you will have to input right user name and password to when login DVR.



By default, DVR only has one account with the name “admin”, and password “12345”. You can modify the password for it and also add a new account in the menu of user management.

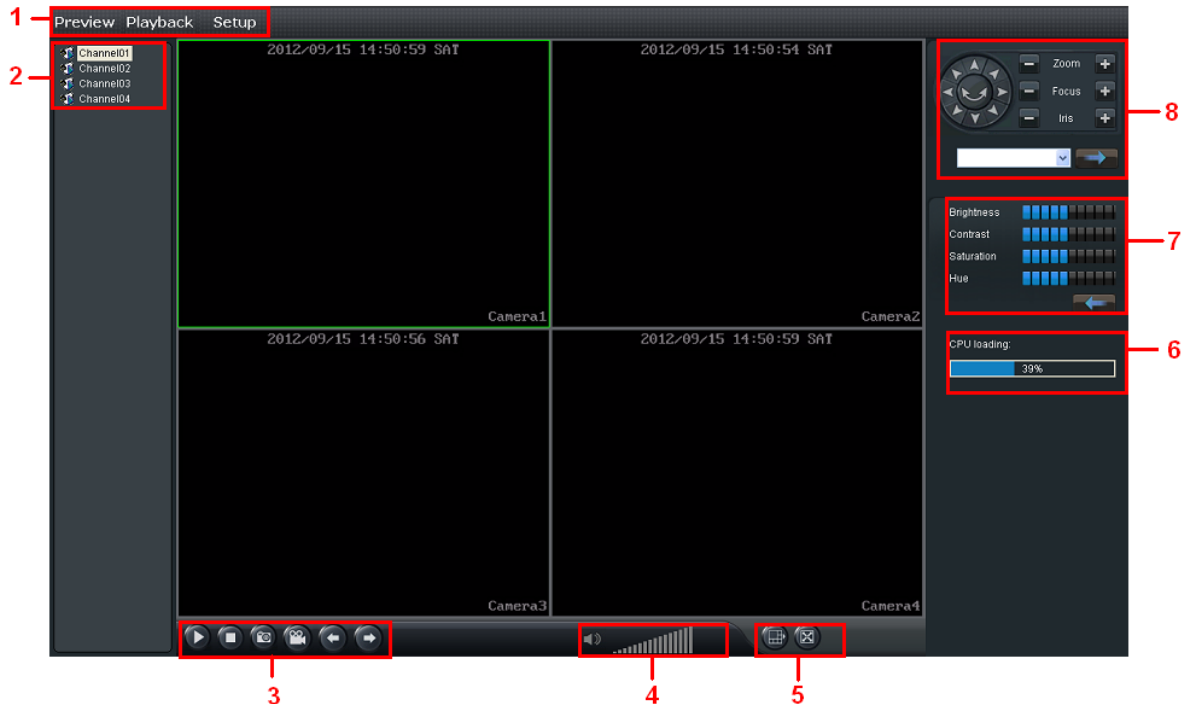
Server Port: Here you should fill in the server port of your DVR. The default server port is 9000. To get your DVR server port, please enter the menu of Network Settings.



Network Type: You need to select whether you access your DVR from Local Area Network (LAN) or Internet (WAN). If you select LAN, IE will automatically start the main stream preview of all cameras. While if you select WAN, IE will start sub-stream preview. By default, main stream has much higher frame rate and image resolution than sub-stream, but main stream needs much higher network bandwidth than sub-stream. So please make sure to select right network type.

3. Live View

Upon login, the Remote Surveillance main screen appears in your browser. By default, remote surveillance opens in Preview mode (split-screen).



- 1) **Modes:** Preview, Playback, and Setup.
- 2) **Channel:** Channel number appears in the left of the main screen. You can double click the channel number to open / close the preview of this channel, or drag the channel number icon and drop at the display window to open the preview. Also you can right click the channel number to select main steam or sub stream of this channel.

3) **Functions:**

1. Click this button you can start preview of all the cameras.

You can select to preview main stream or sub-stream.

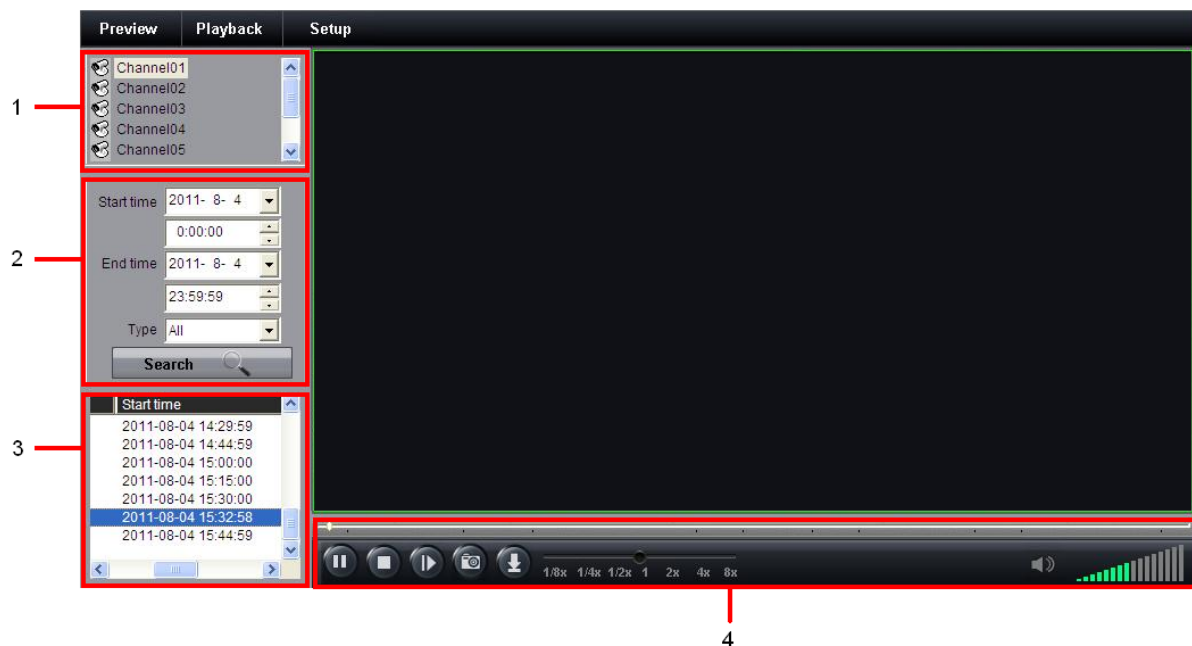


2. Click this button you can stop preview of all the cameras.
 3. Click this button you can take a snapshot of the selected channels on the main display screen. By default, recorded files are saved in C:\Capture. You can modify the directory in Setup -> Local Setup page.
 4. Click this button you can record video of the selected channel directly to your PC. The recorded files are saved in C:\ RecordFile.
 5. Click this button you can switch to the previous channel(s).
 6. Click this button you can switch to the next channel(s).
- 4) **Audio:** Turn on/off audio and control audio volume.

- 5) **Display Modes:** Click the icons to view channels in single-channel full-screen, quad, and split- screen.
- 6) **CPU Loading**
- 7) **Image Settings:** Adjust the brightness, contrast, saturation and hue of the selected channel.
- 8) **PTZ Control:** PTZ control for any connected PTZ cameras. To control a PTZ camera:
 - Select the channel of the connected PTZ camera(s).
 - Click the navigation arrows to pan and tilt the camera. 3. Click + /- to control zoom, focus, and iris.
 - Select one preset and call it.

4. Remote Playback

Use the Replay menu to search and playback recorded video file on your system.



Search the recording files

- 1) Click **Playback** at the top of the main screen;
- 2) Select a channel to playback (Area 1) ;
- 3) Select the search condition: Start time, End time and recording file type, then click Search button (Area 2);
- 4) Select a recording file from the search result (Area 3) and then you can control this file, including Play, Pause, Speed-up, Slow-down, single frame, and also you can download this recording file to you PC (Area 4).

Playback Control

Playback control bar:



- 1) Play / Pause.
- 2) Stop.
- 3) Single frame forward.
- 4) Snap shot.
- 5) Download the recording file. The default directory for the downloaded file is C:\DownloadFile. You can modify the directory in Setup -> Local Setup page.
- 6) Playback speed control.
- 7) Play position scroll bar.
- 8) Mute / Unmute.
- 9) Volume control.

5. Setup

Click **Setup** at the top of the main screen, you can select local setup or remote setup from the pop-up menu. In local setup page, you can setup the directory for recording live streaming, backup files, snap shot and config file. Use the remote setup to configure the settings of your DVR from network.