

### DAY & NIGHT 1080P HD AUTO FOCUS VANDAL RESISTANT DOME IP CAMERA



Auto Focus Vandal Resistant Dome IP Camera ZD6122X is IP67-rated housing protects the camera body against rain and dust, and ensures operation under extreme weather condition. ZD6122X Auto Focus dome is sufficiently robust to meet the IK-10 certification requirement has the ability to withstand external mechanical impacts. Designed in a mini glassy dome form factor and offering flexible Auto Focus installation feature, ZD6122X fits into a range of environments such as retail, home, office, and hotel security.

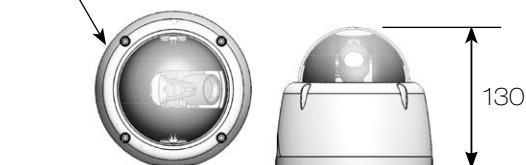
#### FEATURES :

- Full HD 2 megapixel CMOS image sensor
- True H.264 AVC/MPEG-4 part 10 real-time Video compression
- H.264 and Motion JPEG multi-profile Video streaming
- Auto focus with zoom / focus motorized Lens
- 3D Noise Reduction (MCTF)
- 2D WDR function
- Digital PTZ supported
- Face / tampering / audio / motion / alarm detection
- Impact Resistant Polycarbonate Dome Cover
- Day & Night (IR cut removable)
- 2-way audio supported
- Digital I/O : 1 in, 1 out
- ONVIF supported

#### DIMENSIONS : (Unit : mm)

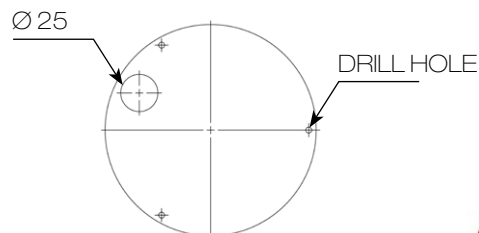
Ø145 x 130

Ø 145



#### INSTALLATION HOLE SITE DIAGRAM :

Ø 25



## SPECIFICATION :

Name	Day & Night 1080P HD Auto Focus Vandal Resistant Dome IP Camera		
Model	ZD6122EX3		
Lens	Focal length	3 - 10.5 mm (zoom / focus motorized)	
	Iris	F1.4	
	Angle of view	H	91.2° - 25.5°
		V	68.4° - 19.1°
	D	114° - 31.9°	
Pick up element	1/2.7" CMOS image sensor		
Effective pixels	1920 (H) x 1080 (V) = 2,073,600 (pixel)		
Chip size	5.856mm (H) x 3.276mm (V)		
Scanning system	Progressive scan		
Infrared cut filter	Auto / schedule / day (color) / night (mono)		
Min. illumination	0.1 Lux at F1.4 (Low light mode)		
White balance	Auto / tungsten / indoor / fluorescents1 / fluorescents2 / outdoor1 / outdoor2		
Back light compensation	Off / on		
Electrical shutter	1/30s - 1/8000s		
Sense up	Off / 1 frame / 2 frames / 3 frames / 7 frames		
Sense up +	Yes		
Auto gain control	36 dB variable gain		
3D Noise Reduction	Off / 1 - 32 selectable		
2D WDR	Off / on		
Privacy masking	Off / on (4 zones)		
Image effects	Brightness, Contrast, Hue, Saturation, Sharpness, Mirror, Flip		
Auto focus	One push		
Live Video output	CVBS 1.0Vp-p, 75 ohm, RCA connector		
Audio in / output	Mono, 1.4 Vp-p, 50 KΩ, Terminal connector		
IP rating	IP67		
Vandal resistant rating	IK10		
Operating temperature	-40°C - +50°C (-40°F - 122°F)		
Dimension	Ø 145 x 130mm		
Weight	960g		
Power supply	DC12V ±10% / PoE (IEEE 802.3af compliant)		
Power consumption	DC12V, 8W / PoE, 9.5W		

Network		
Video compression	H.264, Motion JPEG	
Resolution	1080P(1920 x 1080), 720P(1280 x 720), D1(720 x 480), CIF(352 x 240)	
Multiple profile	Profile #1	H.264 : up to 30 FPS @ 1920 x 1080, MJPEG : up to 30 FPS @ 720 x 480
	Profile #2	H.264 : up to 30 FPS @ 1280 x 720, MJPEG : up to 30 FPS @ 352 x 240
	Profile #3	H.264 : up to 30 FPS @ 1920 x 1080, MJPEG : up to 30 FPS @ 1280 x 720
	Profile #4	H.264 : up to 30 FPS @ 720 x 480, MJPEG : up to 15 FPS @ 1920 x 1080
Video streaming	RTP/HTTP, RTP/TCP, RTP/UDP, Multicast	
Video bitrate	128Kbps - 5Mbps	
	Frame rate and bit rate controllable on-the-fly	
	VBR / CBR / GOP supported	
Security	Base64 HTTP encryption	
	Multiple user access levels with password protection	
	10 user accounts available	
Users	8 simultaneous users	
ePTZ & digital zoom	Yes, ROI is supported	
OSD	Text overlay for date, time, and camera name	
Alarm function	Alarm / motion / tampering / face / alarm detection triggering recording into SD card	
	Image upload over FTP and E-mail by face / tampering / audio / motion detection	
CPU, memory	Embedded SoC ARM11, 528MHz, 256MB DDR2, 256MB flash memory	
Maintenance	Firmware update via HTTP	
	Firmware available at web site	
Network interface	10Mbps / 100Mbps Base-T, RJ-45	
PC requirement	OS : Windows 2000, Windows XP, Windows Vista, Windows 7, Windows 8	
	Browser : Windows Internet Explorer 6.0 or above	
	CPU : intel pentium 4 1.8GHz or above	
	RAM : 1GB or above, independent display card	
Network protocols	IP, TCP, UDP, HTTP, SMTP, NTP, DDNS, UPnP, FTP, ARP, DHCP, PPPoE, DNS, RTSP, RTCP, Telnet, ICMP, IGMP, ONVIF Profile S, SNMP	
Mobile phone	iPhone, iPad, and Android support	
System integration	ONVIF & LILIN HTTP API	
Central management system	CMX 3.6 / NAV 1.0 support	
Video display	LILIN Universal ActiveX & LILIN Java Applet	
OS	Embedded Linux 2.6.32	
Two-way audio	G.711 / PCM	
SD card recording	Support Micro SD/SDHC card for circular recording (card is not included)	
Alarm input / output	Digital 1 input (TTL, +3 - 5VDC) / 1 Output (MOS Relay contact N.O., Load max. 40VDC/300mA)	

