

DAY & NIGHT 3MP HD VANDAL RESISTANT DOME IR IP CAMERA



As with all Pro series cameras, IK10 vandal resistant rating Day & Night 3MP HD vandal resistant dome IR IP camera IPR6132X incorporates Sense up+, a unique technology that successfully delivers stunning video in low-light conditions. Featuring high-efficiency IR-LEDs provide 25 meters of light. Utilizing intelligent image signal processing, AGC control, and 3D Noise Reduction, this model successfully delivers the ultimate low-light image without motion blur. The IPR6132X is capable of producing four independent video streams, different streams can be set for different applications, depending on the individual user requirements. The IP67-rated housing is designed to help the camera body withstand rain and dust and ensures operation under a multitude of harsh weather conditions.

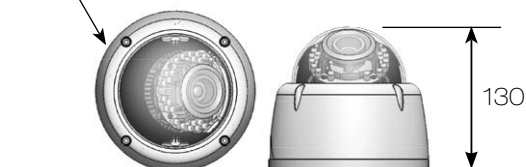
FEATURES :

- Full HD 3 megapixel CMOS image sensor
- True H.264 AVC/MPEG-4 part 10 real-time Video compression
- H.264 and Motion JPEG multi-profile Video streaming
- 3D Noise Reduction (MCTF)
- 2D WDR function
- Digital PTZ supported
- Face / tampering / audio / motion / alarm detection
- Impact Resistant Polycarbonate Dome Cover
- High efficiency IR LED, Radiant distance up to 25m
- Day & Night (IR cut removable)
- 2-way audio supported
- Digital I/O : 1 in, 1 out
- ONVIF supported

DIMENSIONS : (Unit : mm)

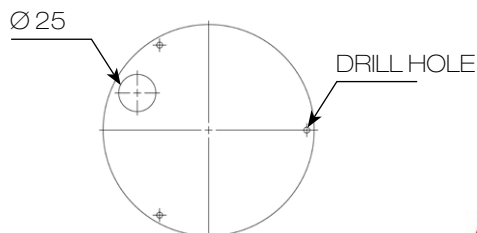
Ø145 x 130

Ø 145



INSTALLATION HOLE SITE DIAGRAM :

Ø 25



SPECIFICATION :

Name		Day & Night 3MP HD Vandal Resistant Dome IR IP Camera	
Model		IPR6132ESX3.6	
Lens	Focal length	3.3 - 12 mm	
	Iris	F1.4	
	Angle of view	H	79.3° - 29.8°
		V	59.4° - 22.4°
D		99° - 37.3°	
Pick up element		1/2.8" CMOS image sensor	
Effective pixels		2096 (H) x 1561 (V) = 3,271,856 (pixel)	
Chip size		7.96mm (H) x 7.61mm (V)	
Scanning system		Progressive scan	
Infrared cut filter		Auto / schedule / day (color) / night (mono)	
Min. illumination		0.15 Lux at F1.4 (Low Light Mode) / 0 Lux with IR LED ON	
White balance		Auto / tungsten / indoor / fluorescents1 / fluorescents2 / outdoor1 / outdoor2	
Back light compensation		Off / on	
Electronic shutter		1/30s - 1/8000s	
Sense up		Off / 1 frame / 2 frames / 3 frames / 7 frames	
Sense up +		Yes	
Auto gain control		36 dB variable gain	
3D Noise Reduction		Off / 1 - 32 selectable	
2D WDR		Off / auto / x2 / x3 / x4	
Privacy masking		Off / on (4 zones)	
Image effects		Brightness, Contrast, Hue, Saturation, Sharpness, Mirror, Flip	
Live Video output		CVBS 1.0Vp-p, 75 ohm, RCA connector	
Audio in / output		Mono, 1.4 Vp-p , 50 K Ω , terminal connector	
IP rating		IP67	
Vandal resistant rating		IK10	
Infrared LED	Peak wavelength	850nm	
	Beam spread	30°	
	Radiant distance	25M	
Operating temperature		-40°C - +50°C (-40°F - 122°F)	
Dimension		Ø145 x 130mm	
Weight		1000g	
Power supply		DC12V \pm 10% / PoE (IEEE 802.3af compliant)	
Power consumption		DC12V, 9W / PoE, 10.2W	

Network			
Video compression		H.264 , Motion JPEG	
Resolution		3MP(2048 x 1536), 1080P(1920 x 1080), 720P(1280 x 720), D1(720 x 480), CIF(352 x 240)	
Multiple profile	Profile #1	H.264 : up to 30 FPS @ 1920 x 1080, MJPEG : up to 30 FPS @ 720 x 480	
	Profile #2	H.264 : up to 30 FPS @ 1280 x 720, MJPEG : up to 30 FPS @ 352 x 240	
	Profile #3	H.264 : up to 30 FPS @ 1920 x 1080, MJPEG : up to 30 FPS @ 1280 x 720	
	Profile #4	H.264 : up to 30 FPS @ 720 x 480, MJPEG : up to 15 FPS @ 1920 x 1080	
	Profile #5	H.264 : up to 15 fps @ 2048 x 1536 , MJPEG : up to 15 fps @ 720 x 480	
Video streaming		RP/HTTP, RTP/TCP, RTP/UDP, Multicast	
Video bitrate		128Kbps - 5Mbps Frame rate and bit rate controllable on-the-fly VBR / CBR / GOP supported	
Security		Base64 HTTP encryption Multiple user access levels with password protection 10 user accounts available	
Users		8 simultaneous users	
ePTZ & digital zoom		Yes, ROI is supported	
OSD		Text overlay for date, time, and camera name	
Alarm function		Alarm / motion / tampering / face / alarm detection triggering recording into SD card Image upload over FTP and E-mail by face / tampering / audio / motion detection	
CPU, memory		Embedded SoC ARM11, 528MHz, 256MB DDR2, 256MB flash memory	
Maintenance		Firmware update via HTTP Firmware available at web site	
Network interface		10Mbps / 100Mbps Base-T, RJ-45	
PC requirement		OS : Windows 2000, Windows XP, Windows Vista, Windows 7, Windows 8 Browser : Windows Internet Explorer 6.0 or above CPU : intel pentium 4 1.8GHz or above RAM : 1GB or above, independent display card	
Network protocols		IP, TCP, UDP, HTTP, SMTP, NTP, DDNS, UPnP, FTP, ARP, DHCP, PPPoE, DNS, RTSP, RTCP, Telnet, ICMP, IGMP, ONVIF Profile S, SNMP, SIP, Bonjour	
Mobile phone		iPhone, iPad, and android support	
System integration		ONVIF & LILIN HTTP API	
Central management system		CMX 3.6 / NAV 1.0 support	
Video display		LILIN Universal ActiveX & LILIN Java Applet	
OS		Embedded Linux 2.6.32	
Two-way audio		G.711 / PCM	
SD card recording		Support Micro SD/SDHC card for circular recording (card is not included)	
Alarm input / output		Digital 1 input (TTL, +3 - 5VDC) / 1 Output (MOS Relay contact N.O., Load max. 40VDC/300mA)	

