



As with all Pro series cameras, Day & Night 1080P HD Vandal Resistant Dome IR IP Camera IPR6122-IVS incorporates Sense up+, a unique technology that successfully delivers stunning video in low-light conditions. Utilizing intelligent image signal processing, AGC control, and 3D Noise Reduction, Intelligent Video Surveillance, this model successfully delivers the ultimate low-light image without motion blur. The IPR6122-IVS is capable of producing four independent video streams, different streams can be set for different applications, depending on the individual user requirements. The IP67-rated housing is designed to help the camera body withstand rain and dust and ensures operation under a multitude of harsh weather conditions.

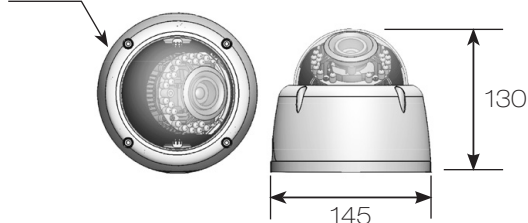
FEATURES :

- Full HD 2 megapixel CMOS image sensor
- True H.264 AVC/MPEG-4 part 10 real-time Video compression
- H.264 and Motion JPEG multi-profile Video streaming
- 3D Noise Reduction (MCTF)
- 2D WDR function / Digital PTZ supported
- Intelligent Video Surveillance
- Face / tampering / audio / motion / alarm detection
- Impact Resistant Polycarbonate Dome Cover
- High efficiency IR LED, Radiant distance up to 25m
- Day & Night (IR cut removable)
- 2-way audio supported
- Digital I/O : 1 in, 1 out
- ONVIF supported

DIMENSIONS : (Unit : mm)

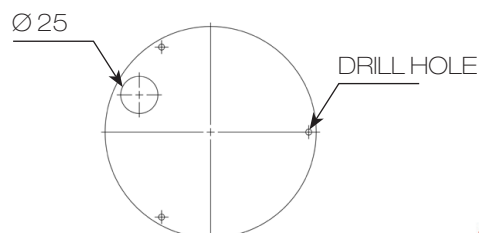
Ø145 x 130

Ø145



INSTALLATION HOLE SITE DIAGRAM :

Ø25



SPECIFICATION :

Name		Day & Night 1080P HD Vandal Resistant Dome IR IP Camera	
Model		IPR6122-IVS	
Lens	Focal length	3.3 – 12 mm	
	Iris	F1.4	
	Angle of view	H	79.3° – 29.8°
		V	59.4° – 22.4°
D		99° – 37.3°	
Pick up element		1/2.7" CMOS image sensor	
Effective pixels		1920 (H) x 1080 (V) = 2,073,600 (pixel)	
Chip size		5.856mm (H) x 3.276mm (V)	
Scanning system		Progressive scan	
Infrared cut filter		Auto / schedule / day (color) / night (mono)	
Min. illumination		0.1 Lux at F1.4 (Low light mode) / 0 Lux with IR LED on	
White balance		Auto / tungsten / indoor / fluorescents1 / fluorescents2 / outdoor1 / outdoor2	
Back light compensation		Off / on	
Electronic shutter		1/30s – 1/8000s	
Sense up		Off / 1 frame / 2 frames / 3 frames / 7 frames	
Sense up +		Yes	
Auto gain control		36 dB variable gain	
3D Noise Reduction		Off / 1 - 32 selectable	
2D WDR		Off / on	
Privacy masking		Off / on (4 zones)	
Image effects		Brightness, Contrast, Hue, Saturation, Sharpness, Mirror, Flip	
Live Video output		CVBS 1.0Vp-p, 75 ohm, RCA connector	
Audio in / output		Mono, 1.4 Vp-p , 50 K Ω , terminal connector	
IP rating		IP67	
Vandal resistant rating		IK10	
Infrared LED	Peak wavelength	850nm	
	Beam spread	30°	
	Radiant distance	25M	
Operating temperature		-40°C – +50°C (-40°F – 122°F)	
Dimension		Ø 145 x 130mm	
Weight		1000g	
Power supply		DC12V \pm 10% / PoE (IEEE 802.3af compliant)	
Power consumption		DC12V, 9W / PoE, 10.2W	

Network			
Video compression		H.264 , Motion JPEG	
Resolution		1080P(1920 x 1080), 720P(1280 x 720), D1(720 x 480), CIF(352 x 240)	
Multiple profile	Profile #1	H.264 : up to 30 FPS @ 1920 x 1080, MJPEG : up to 30 FPS @ 720 x 480	
	Profile #2	H.264 : up to 30 FPS @ 1280 x 720, MJPEG : up to 30 FPS @ 352 x 240	
	Profile #3	H.264 : up to 30 FPS @ 1920 x 1080, MJPEG : up to 30 FPS @ 1280 x 720	
	Profile #4	H.264 : up to 30 FPS @ 720 x 480, MJPEG : up to 15 FPS @ 1920 x 1080	
Video streaming		RTP/HTTP, RTP/TCP, RTP/UDP, Multicast	
Video bitrate	128Kbps – 5Mbps		
	Frame rate and bit rate controllable on-the-fly		
	VBR / CBR / GOP supported		
Security	Base64 HTTP encryption		
	Multiple user access levels with password protection		
	10 user accounts available		
Users		8 simultaneous users	
ePTZ & digital zoom		Yes, ROI is supported	
OSD		Text overlay for date, time, and camera name	
Intelligent Video Surveillance		Advanced Motion / Board Zone / Semaphore+Board Zone / Object Counting	
Alarm function		Alarm / motion / tampering / face / alarm detection triggering recording into SD card	
CPU, memory		Image upload over FTP and E-mail by face / tampering / audio / motion detection	
Maintenance		Embedded SoC ARM11, 528MHz, 256MB DDR2, 256MB flash memory	
Network interface		Firmware update via HTTP	
PC requirement		Firmware available at web site	
Network protocols		10Mbps / 100Mbps Base-T, RJ-45	
Mobile phone		OS : Windows 2000, Windows XP, Windows Vista, Windows 7, Windows 8	
System integration		Browser : Windows Internet Explorer 6.0 or above	
Central management system		CPU : intel pentium 4 1.8GHz or above	
Video display		RAM : 1GB or above, independent display card	
OS		IP, TCP, UDP, HTTP, SMTP, NTP, DDNS, UPnP, FTP, ARP, DHCP, PPPoE, DNS, RTSP, RTCP, Telnet, ICMP, IGMP, ONVIF Profile S, SNMP, SIP, Bonjour	
Two-way audio		iPhone, iPad, and Android support	
SD card recording		ONVIF & LILIN HTTP API	
Alarm input / output		CMX 3.6 / NAV 1.0 support	
		Video display	
		LILIN Universal ActiveX & LILIN Java Applet	
		OS	
		Embedded Linux 2.6.32	
		G.711 / PCM	
		Support Micro SD/SDHC card for circular recording (card is not included)	
		Digital 1 input (TTL, +3 – 5VDC) / 1 Output (MOS Relay contact N.O., Load max. 40VDC/300mA)	

